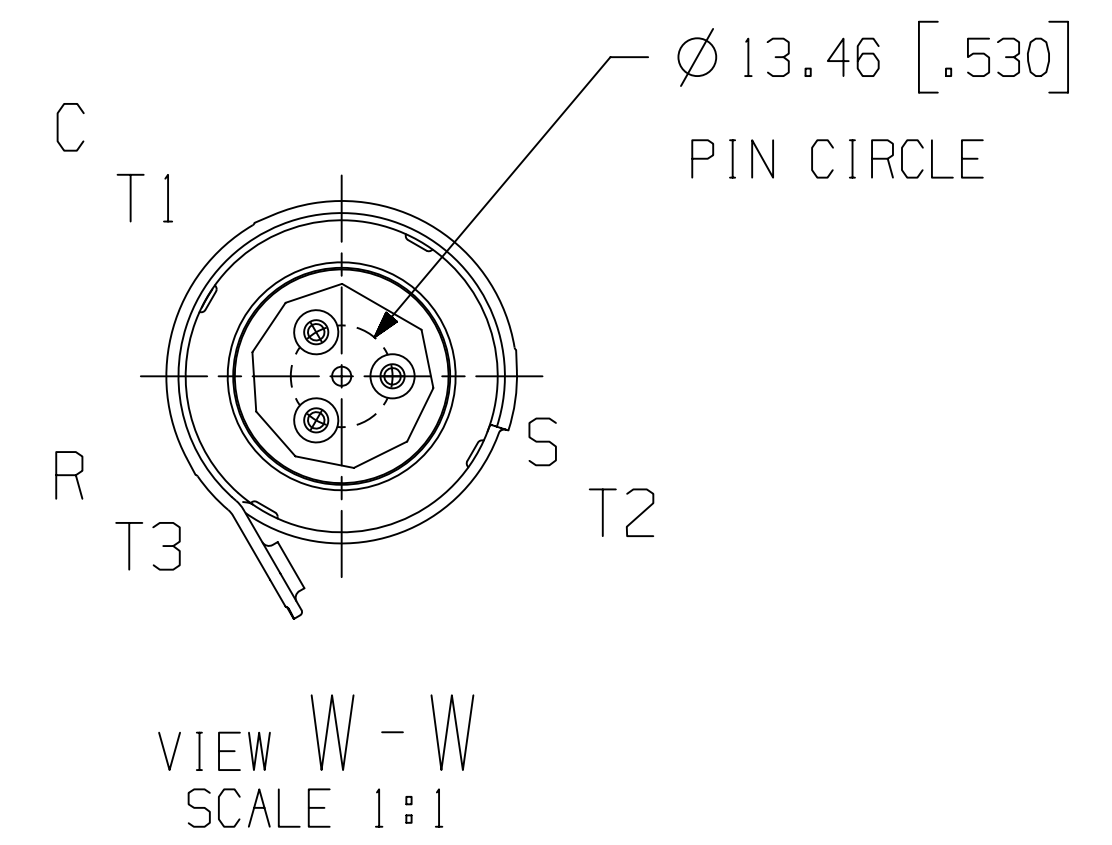
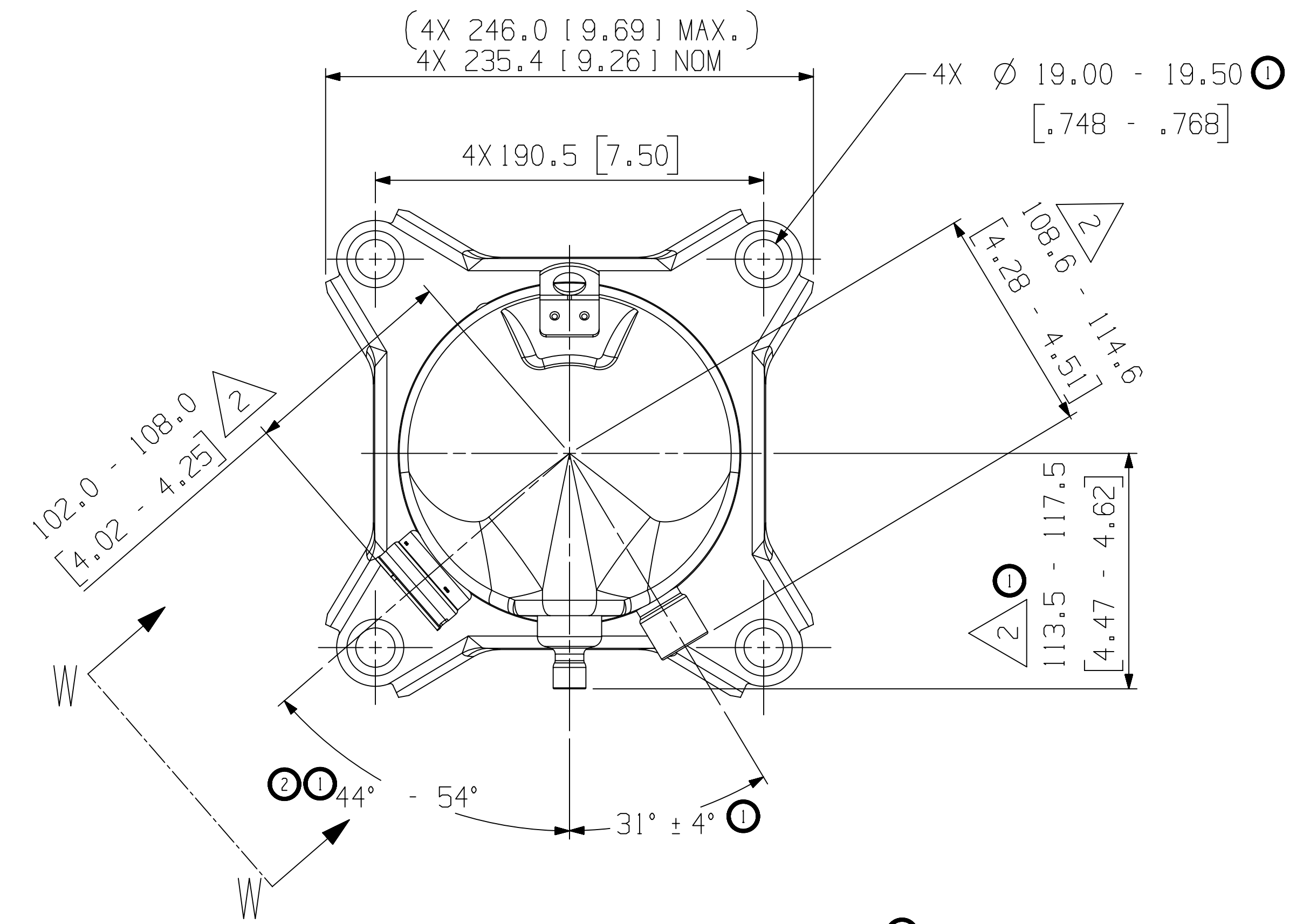


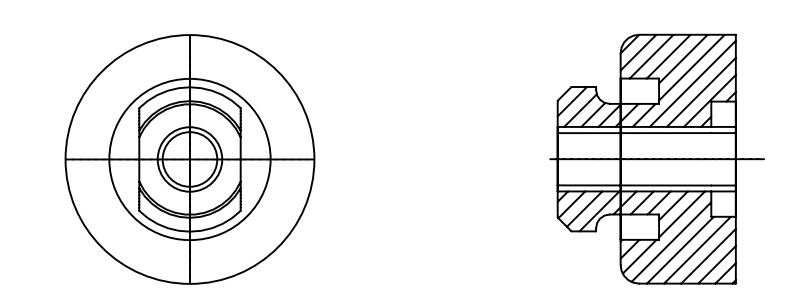
MODEL NUMBER
ZS21KAE
ZS26KAE
ZS29KAE
ZS33KAE
YS21KA*
YS23/24KA*
YS26KA*
YS30KA*

SPECIFICATIONS	
ES NO.	DESCRIPTION
ES92-155	CONVERSION-METRIC



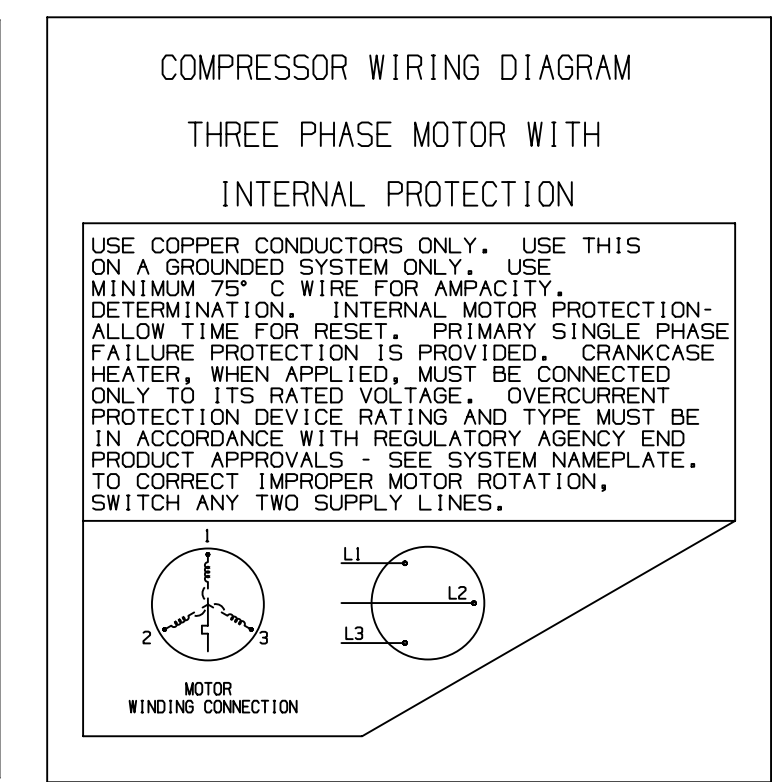
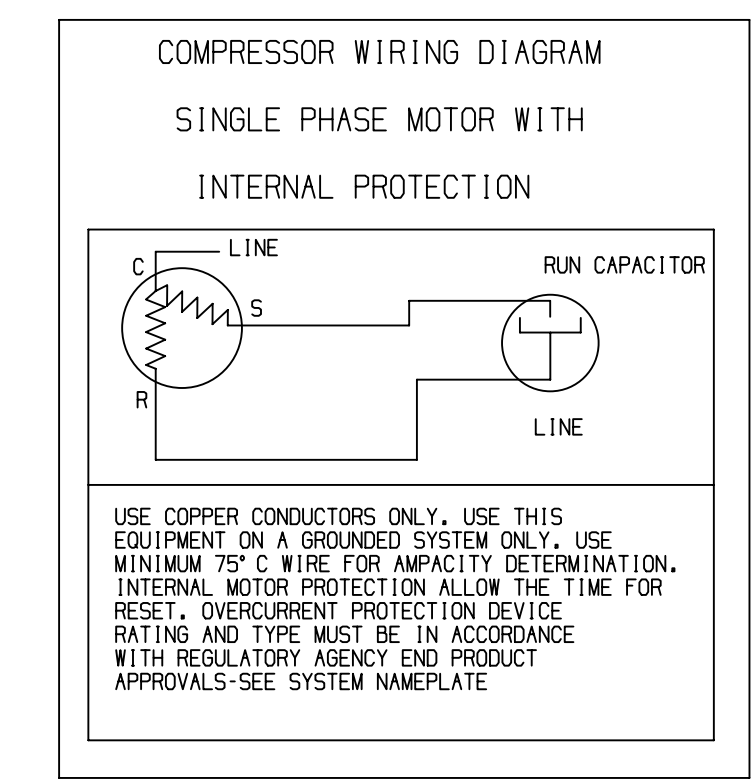
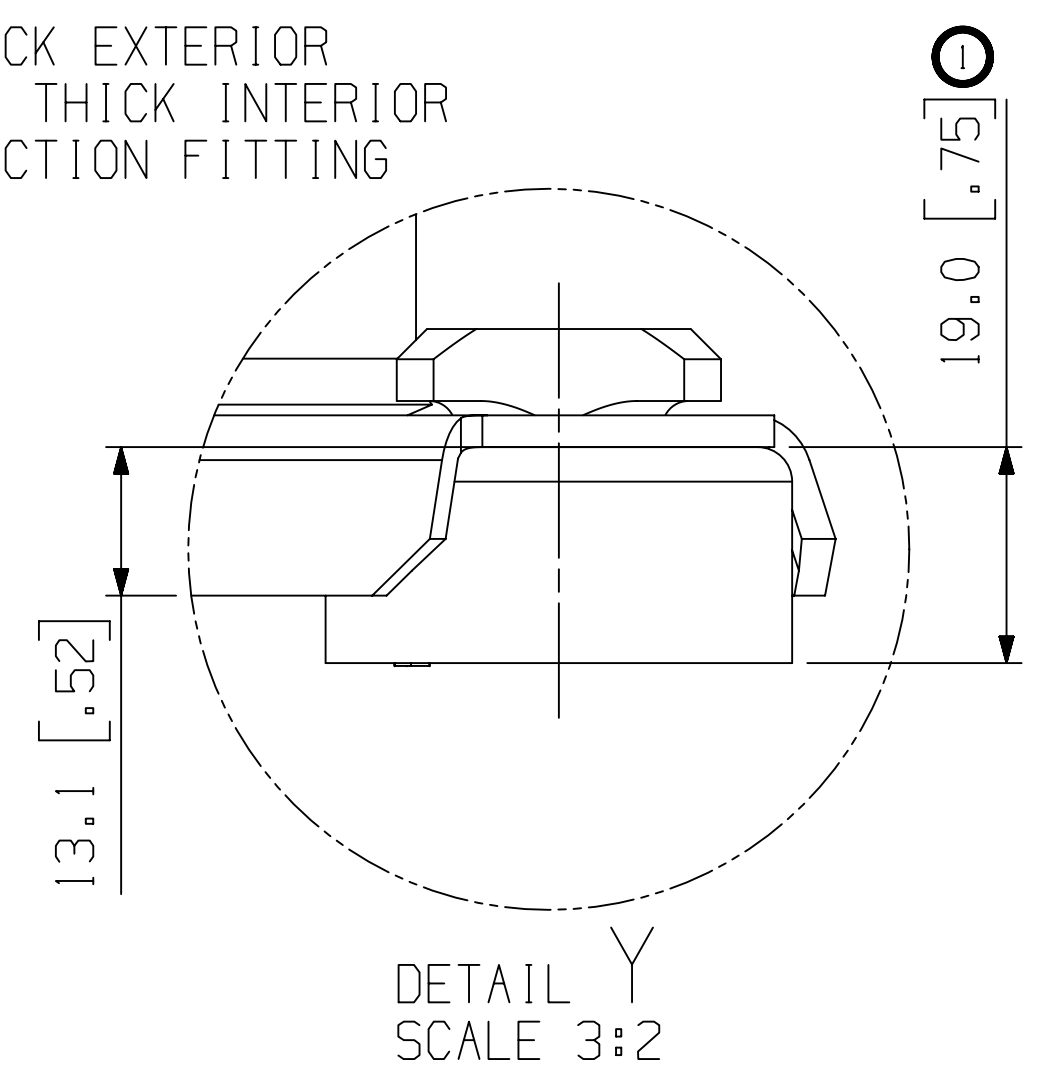
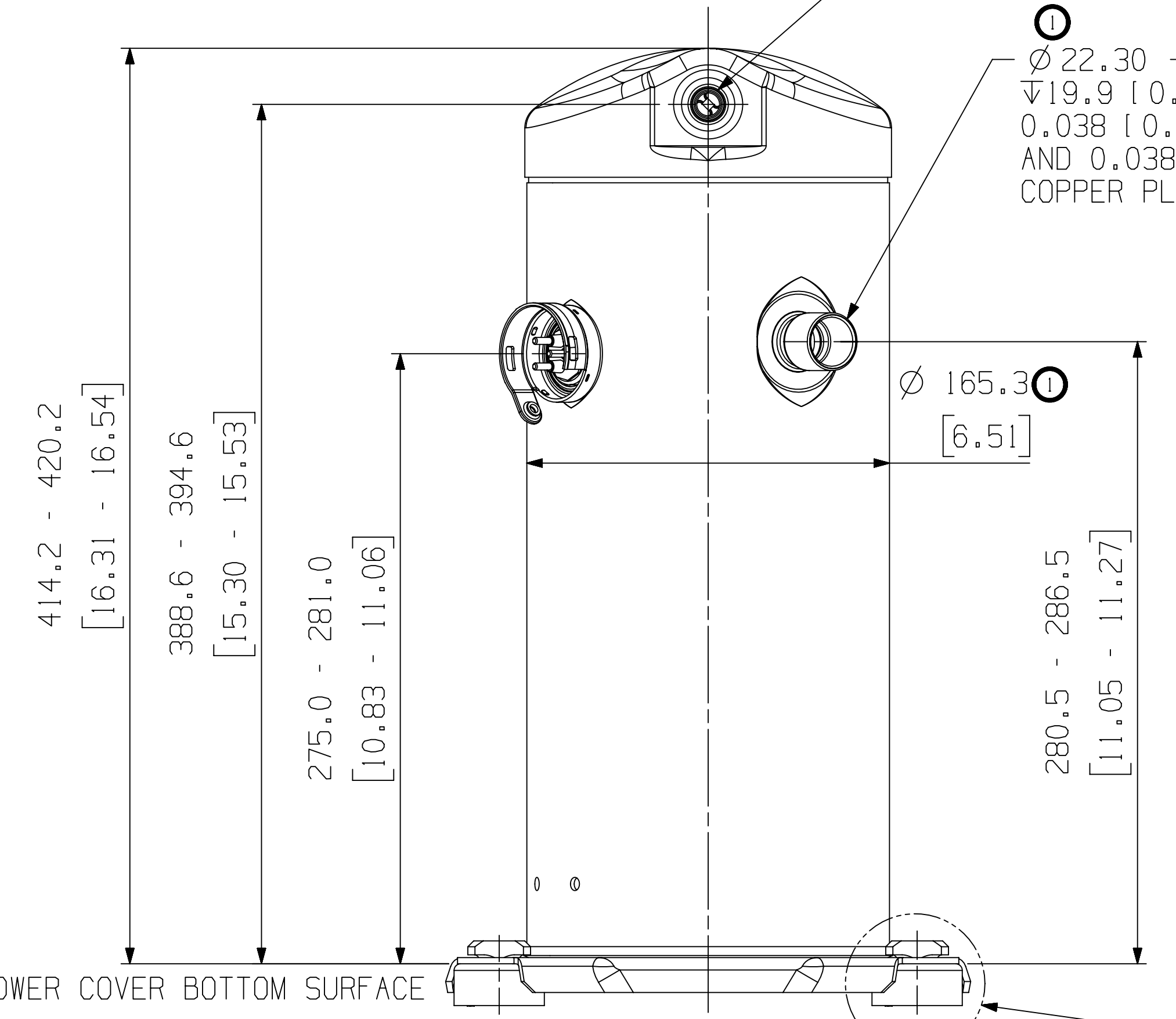
- NOTES:
- ALL TOLERANCES ± 1.5 [0.06] UNLESS OTHERWISE SPECIFIED.
 - DUE TO ACCUMULATED ASSEMBLY TOLERANCES THE LISTED COMPONENTS MAY VARY FROM THE MOUNTING HOLES AS SHOWN BELOW:
 - SUCTION FITTING : ± 3.0 [0.12]
DISCHARGE FITTING: ± 3.0 [0.12]
 - THE SUCTION TUBE, DISCHARGE TUBE, AND CIRCLE FENCE RADIAL DIMENSIONS ARE TO BE GAUGED FROM THE CENTER OF THE MOUNTING HOLE PATTERN.
 - TUBE ENDS MUST BE PLUGGED.
 - MOUNTING KIT:

GROMMET DUROMETER	4 FOOT KIT
35-45	527-0116-00



$\varnothing 12.78 - 12.95$ [0.503 - 0.510] I.D. ◆
 $\nabla 10.1$ [0.40] MIN,
 0.038 [0.0015] MIN THICK EXTERIOR
 AND 0.038 [0.0015] MIN THICK INTERIOR
 COPPER PLATED STEEL DISCHARGE FITTING

$\varnothing 22.30 - 22.48$ [0.878 - 0.885] I.D. ◆
 $\nabla 19.9$ [0.78] MIN,
 0.038 [0.0015] MIN THICK EXTERIOR
 AND 0.038 [0.0015] MIN THICK INTERIOR
 COPPER PLATED STEEL SUCTION FITTING



ECN324700	2	ADDED Y* MODELS IN TABLE	05-20-24	AMN	VDD
ECN317771	1	REDRAWN AND ADDED MODELS	08-16-23	DAG	AMN
ECN003963	0	RELEASED	11-21-11	HWW	DC
ENG NOTICE NO.	REV.NO.	REVISIONS	DATE	BY	CHKD
24		CONFIDENTIALITY NOTICE			
THIS DRAWING AND INFORMATION CONTAINED HEREIN ARE THE EXCLUSIVE PROPERTY OF COPELAND LP AND/OR ITS AFFILIATES (COLLECTIVELY "COPELAND") AND SHALL BE RETURNED UPON DEMAND AND SHALL NOT BE REPRODUCED IN WHOLE OR IN PART, DISCLOSED TO ANYONE ELSE OR USED, WITHOUT THE WRITTEN CONSENT OF COPELAND.					
MATERIAL SPECIFICATION		DRAWN BY	SUPERSEDES DWG NO / REV NO		
N/A		DAG	497-1112-00 / 000		
		DATE	SCALE	DATE FORMAT:	
		08-16-23	1:2	MM-DD-YY	
TITLE		DRAWING NUMBER	SHEET 1 OF 1	DWG	
REF DWG-WELD COMP ASSM		497-1112-00		4	
				SIZE	

COPELAND

INTERPRET PER ASME Y14.5M-1994 AND COPELAND DESIGN STANDARDS DS2002

DO NOT SCALE DRAWING

CRITICAL PRODUCT CHARACTERISTICS

UNLESS OTHERWISE SPECIFIED DIMENSIONS ARE MILLIMETER OR (INCH)

TOLERANCES:
 2-PLACE +
 3-PLACE +
 ANGULAR ±

COPYRIGHT COPELAND - CONFIDENTIAL