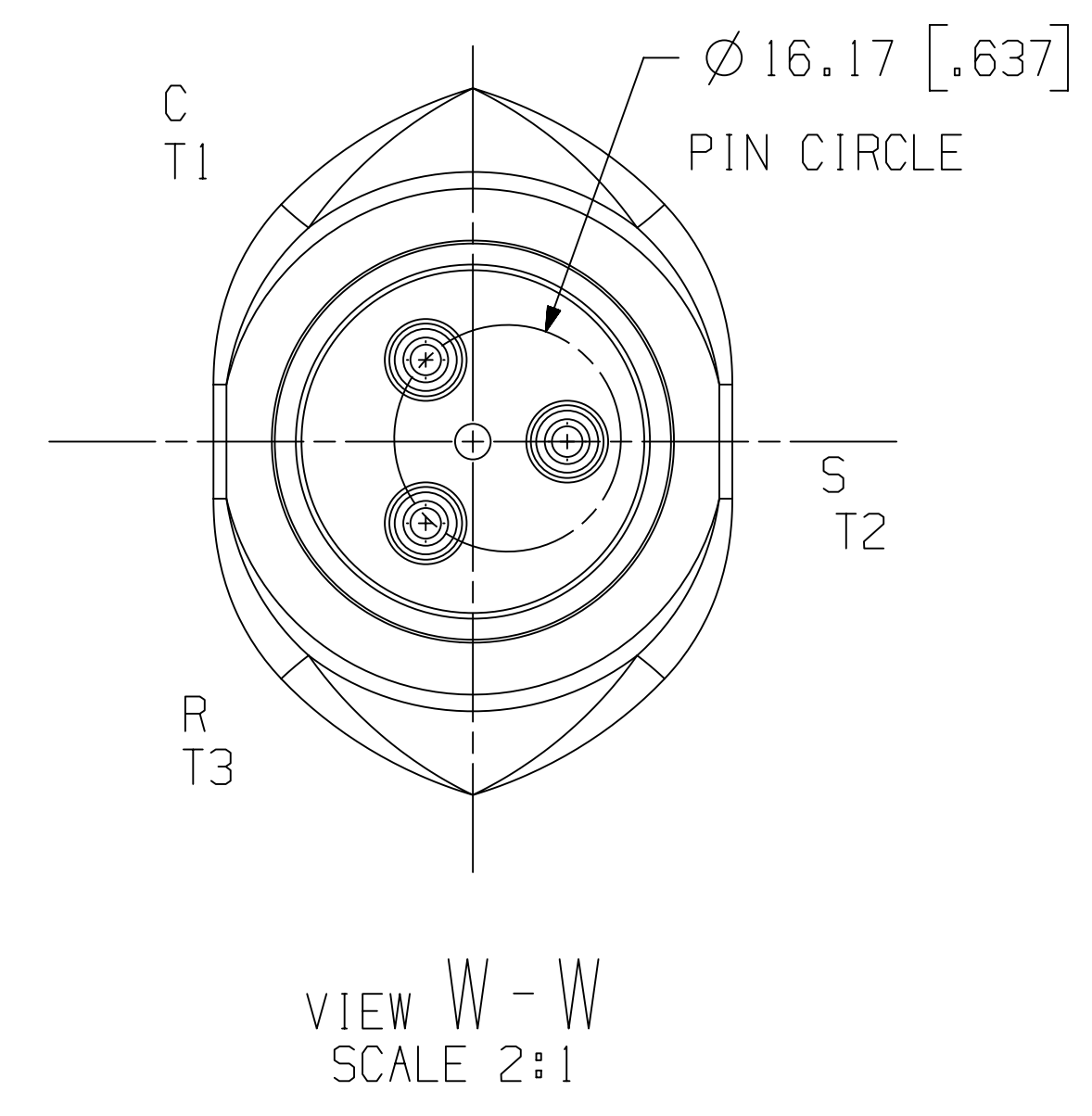
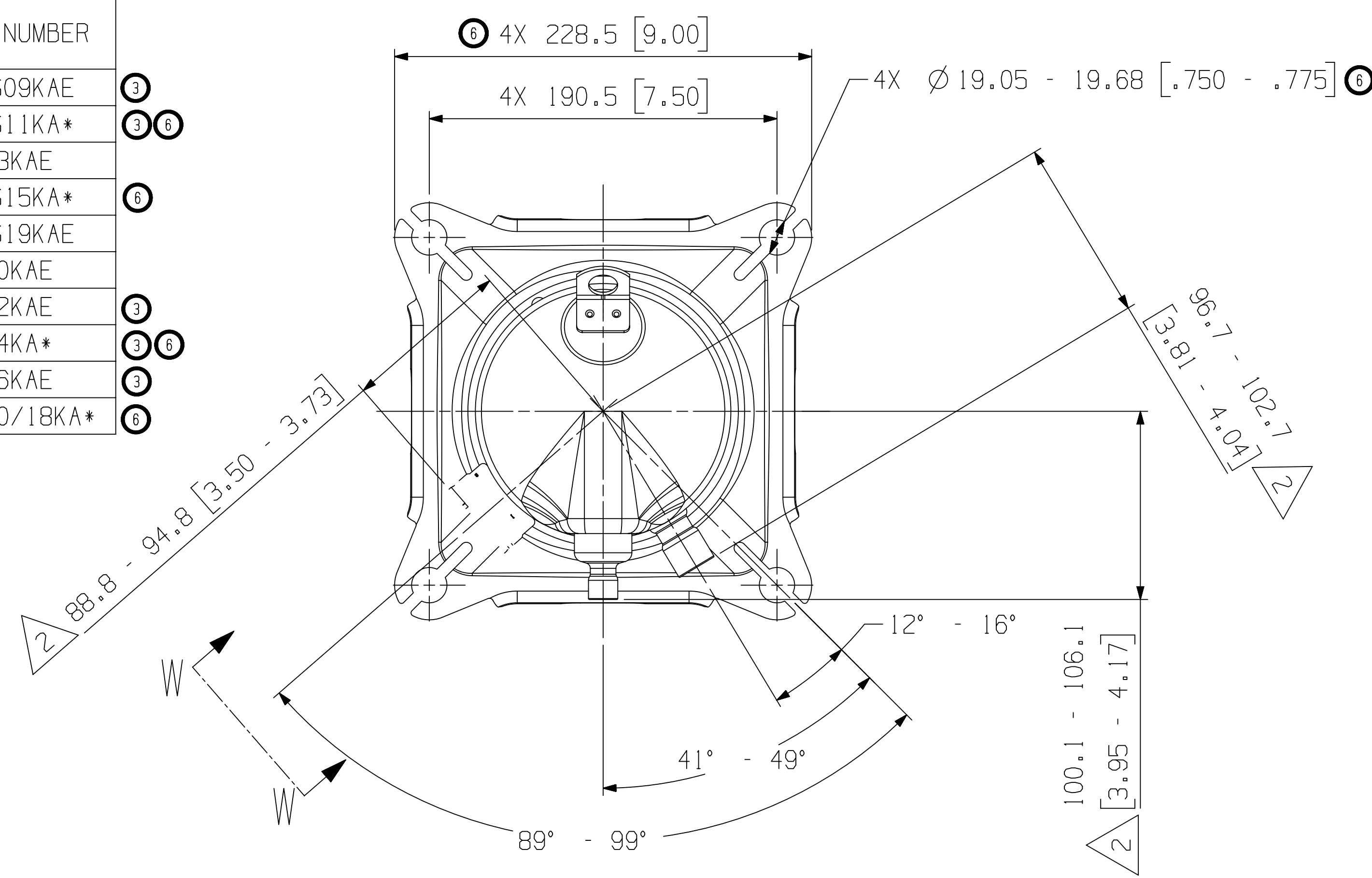


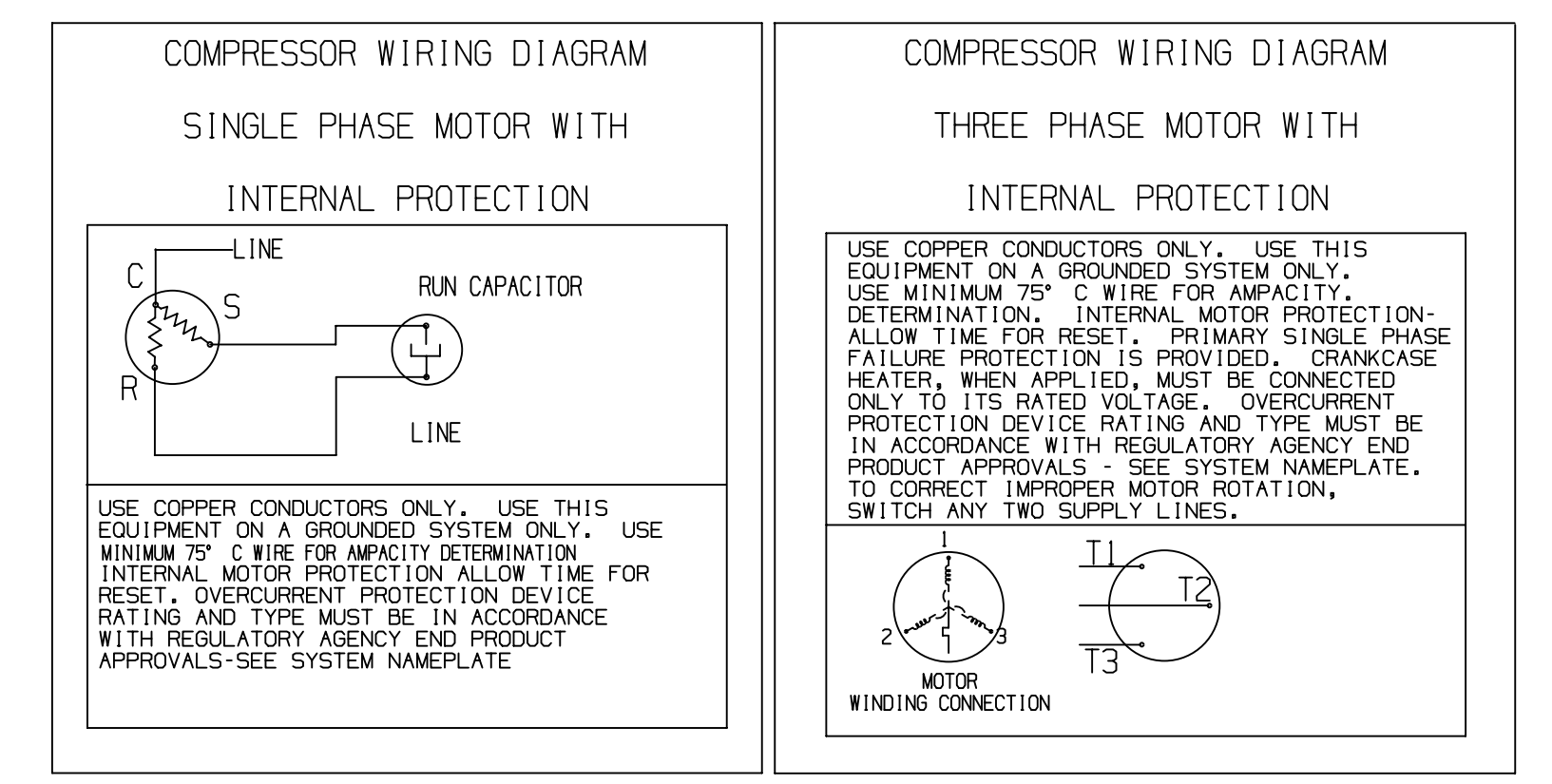
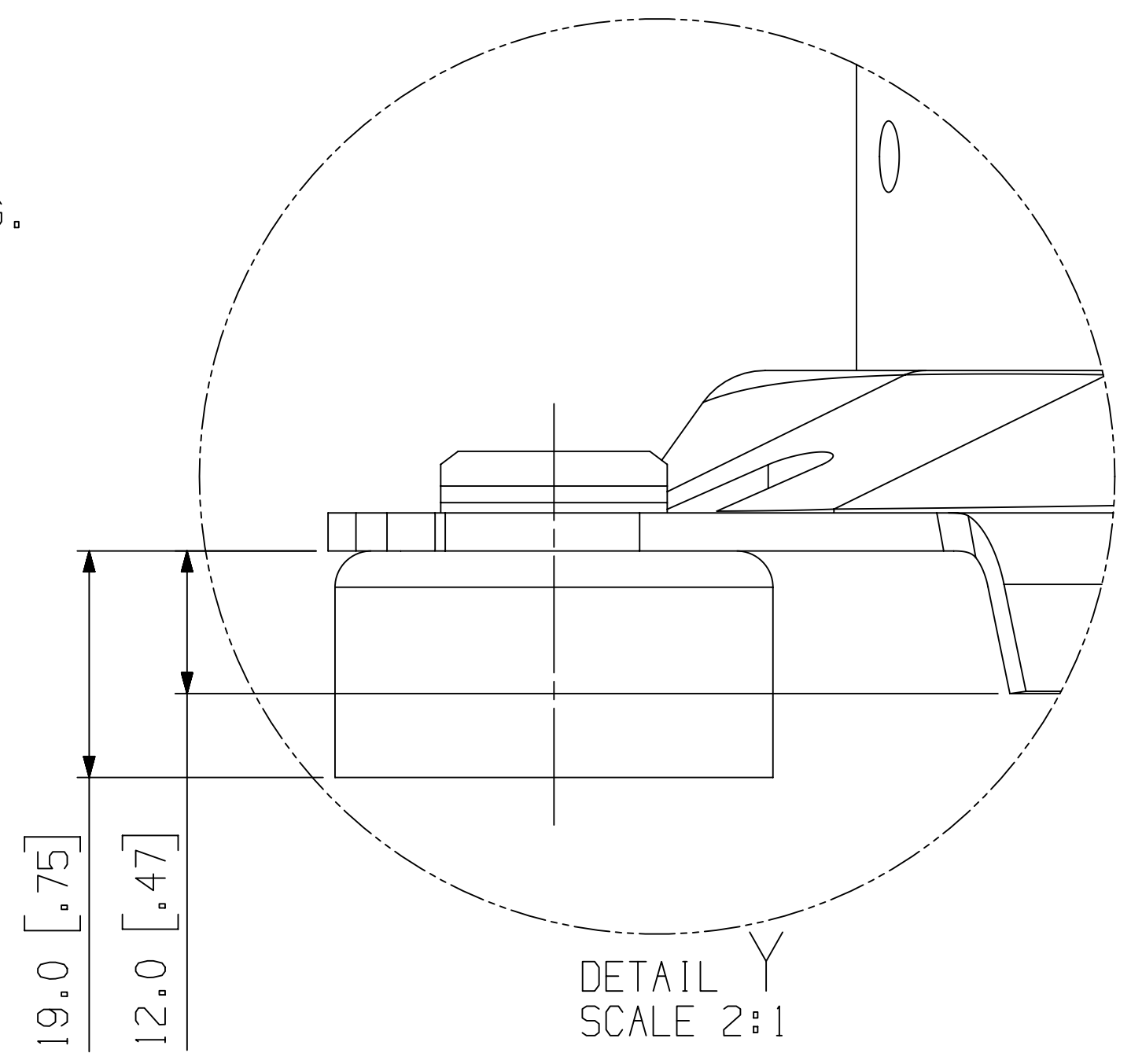
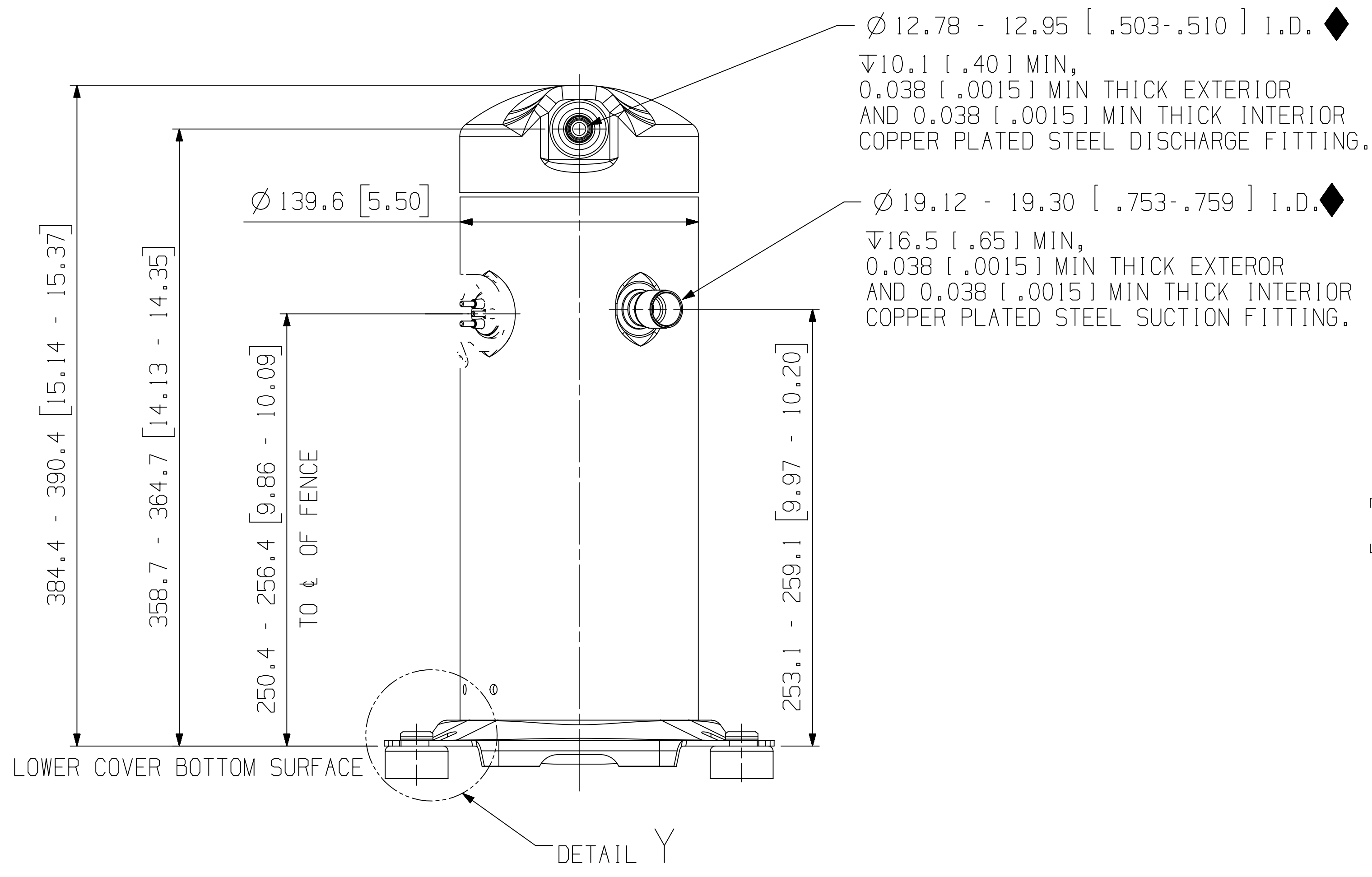
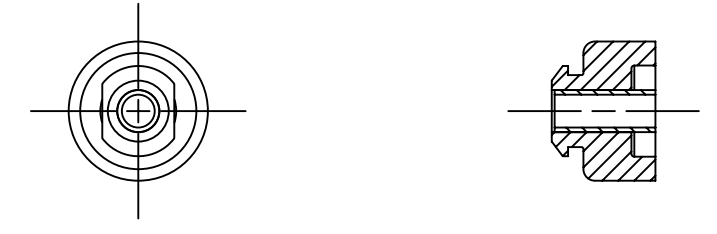
MODEL NUMBER
YS/ZS09KAE
YS/ZS11KA*
ZS13KAE
YS/ZS15KA*
YS/ZS19KAE
ZS20KAE
YS12KAE
YS14KA*
YS16KAE
YS08/10/18KA*

SPECIFICATIONS	
ES NO.	DESCRIPTION
ES92-155	CONVERSION-METRIC



- NOTES:
- ALL TOLERANCES ± 1.5 [0.06] UNLESS OTHERWISE SPECIFIED.
 - DUE TO ACCUMULATED ASSEMBLY TOLERANCES THE LISTED COMPONENTS MAY VARY FROM THE MOUNTING HOLES AS SHOWN BELOW:
 - SUCTION FITTING : ± 3.0 [0.12]
 - DISCHARGE FITTING: ± 3.0 [0.12]
 - TUBE ENDS MUST BE PLUGGED.
 - MOUNTING KIT:

GROMMET DUROMETER	4 FOOT KIT
30-35	527-0044-15



ECN324694	6	ADDED Y* MODELS IN TABLE	05-16-24	AMN	VDD
ECN325547	5	CORRECTED TITLE BLOCK	10-10-23		
ECN325164	4	UPDATED TITLE BLOCK	08-23-23		
ECN317765	3	ADDED YS MODELS	06-14-23	VDD	AMN
ECN004504	0	RELEASED	09-28-11	HWW	DC

COPELAND

INTERPRET PER ASME Y14.5M-1994 AND COPELAND DESIGN STANDARDS DS2002

DO NOT SCALE DRAWING

CRITICAL PRODUCT CHARACTERISTICS

UNLESS OTHERWISE SPECIFIED DIMENSIONS ARE MILLIMETER OR (INCH)

TOLERANCES:
 1-PLACE :
 2-PLACE :
 ANGULAR :

24

CONFIDENTIALITY NOTICE

THIS DRAWING AND INFORMATION CONTAINED HEREIN ARE THE EXCLUSIVE PROPERTY OF COPELAND LP AND/OR ITS AFFILIATES (COLLECTIVELY "COPELAND") AND SHALL BE RETURNED UPON DEMAND AND SHALL NOT BE REPRODUCED IN WHOLE OR IN PART, DISCLOSED TO ANYONE ELSE OR USED, WITHOUT THE WRITTEN CONSENT OF COPELAND.

MATERIAL SPECIFICATION	DRAWN BY	SUPERSEDES DWG NO / REV NO
N/A	VDD	497-1111-00 / 002
DATE	SCALE	DATE FORMAT:
06-14-23	1:2	MM-DD-YY
TITLE	DRAWING NUMBER	SHEET 1 OF 1 DWG
REF DWG-WELD COMP ASSM	497-1111-00	4
		SIZE