

8	7	6	5	4	3	2	1		
PART NUMBER	MODEL NUMBER	A	B	C	D	E	F	G	H
497-3600-00	ZFD25KVE-TFD/TF7/TFE/TF5	481.1 (18.94)	463.0 (18.23)	412.1 (16.23)	340.9 (13.42)	296.7 (11.68)	233.2 (9.18)	79.6 (3.13)	47.6 (1.87)

SPECIFICATIONS	
ES NO.	DESCRIPTION
ES92-155	CONVERSION-METRIC

NOTES:

① ALL TOLERANCES ± 1.50 (0.060) UNLESS OTHERWISE SPECIFIED.

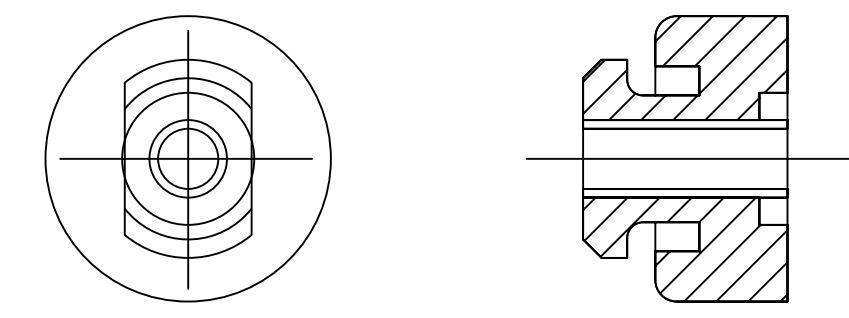
DUE TO ACCUMULATED ASSEMBLY TOLERANCES THE LISTED COMPONENTS MAY VARY FROM THE MOUNTING HOLES AS SHOWN BELOW:

③ SUCTION FITTING : ± 3.0 (0.12)
 ③ DISCHARGE FITTING : ± 3.0 (0.12)

2. TUBE ENDS MUST BE PLUGGED.

3. MOUNTING KIT:

GROMMET DUROMETER	4 FOOT KIT
35-45	527-0116-00



COMPRESSOR WIRING DIAGRAM

USE COPPER CONDUCTORS ONLY. USE MINIMUM 75° C WIRE FOR AMPACITY DETERMINATION
 INTERNAL MOTOR PROTECTION - ALLOW TIME FOR RESET. OVERCURRENT PROTECTION DEVICE RATING AND TYPE MUST BE IN ACCORDANCE WITH REGULATORY AGENCY END PRODUCT APPROVALS - SEE SYSTEM NAMEPLATE.
 CRANKCASE HEATER, WHEN APPLIED, MUST BE CONNECTED ONLY TO ITS RATED VOLTAGE. TO CORRECT IMPROPER ROTATION OF THREE PHASE MODELS, SWITCH ANY TWO SUPPLY LINES, REFER TO THE APPLICABLE SYSTEM WIRING DIAGRAM.

08-1219-00
 B-06

③ ④ TORQUE T-BLOCK SCREWS TO 1.4-1.7 Nm (12-15 IN LBS).

ECN325307	4	UPDATED TITLE BLOCK	09-11-23		
ECN321503	3	REDRAWN WITH CHANGES	08-30-21	SRP	AMN
ECN004715	0	RELEASED	03-13-12	CX	DC
ENG NOTICE NO.	REV. NO.	REVISIONS	DATE	BY	CHKD

CONFIDENTIALITY NOTICE
 THIS DRAWING AND INFORMATION CONTAINED HEREIN ARE THE EXCLUSIVE PROPERTY OF COPELAND LP AND/OR ITS AFFILIATES (COLLECTIVELY "COPELAND") AND SHALL BE RETURNED UPON DEMAND AND SHALL NOT BE REPRODUCED IN WHOLE OR IN PART, DISCLOSED TO ANYONE ELSE OR USED, WITHOUT THE WRITTEN CONSENT OF COPELAND.

COPELAND

INTERPRET PER ASME Y14.5M-1994 AND COPELAND DESIGN STANDARDS DS2002

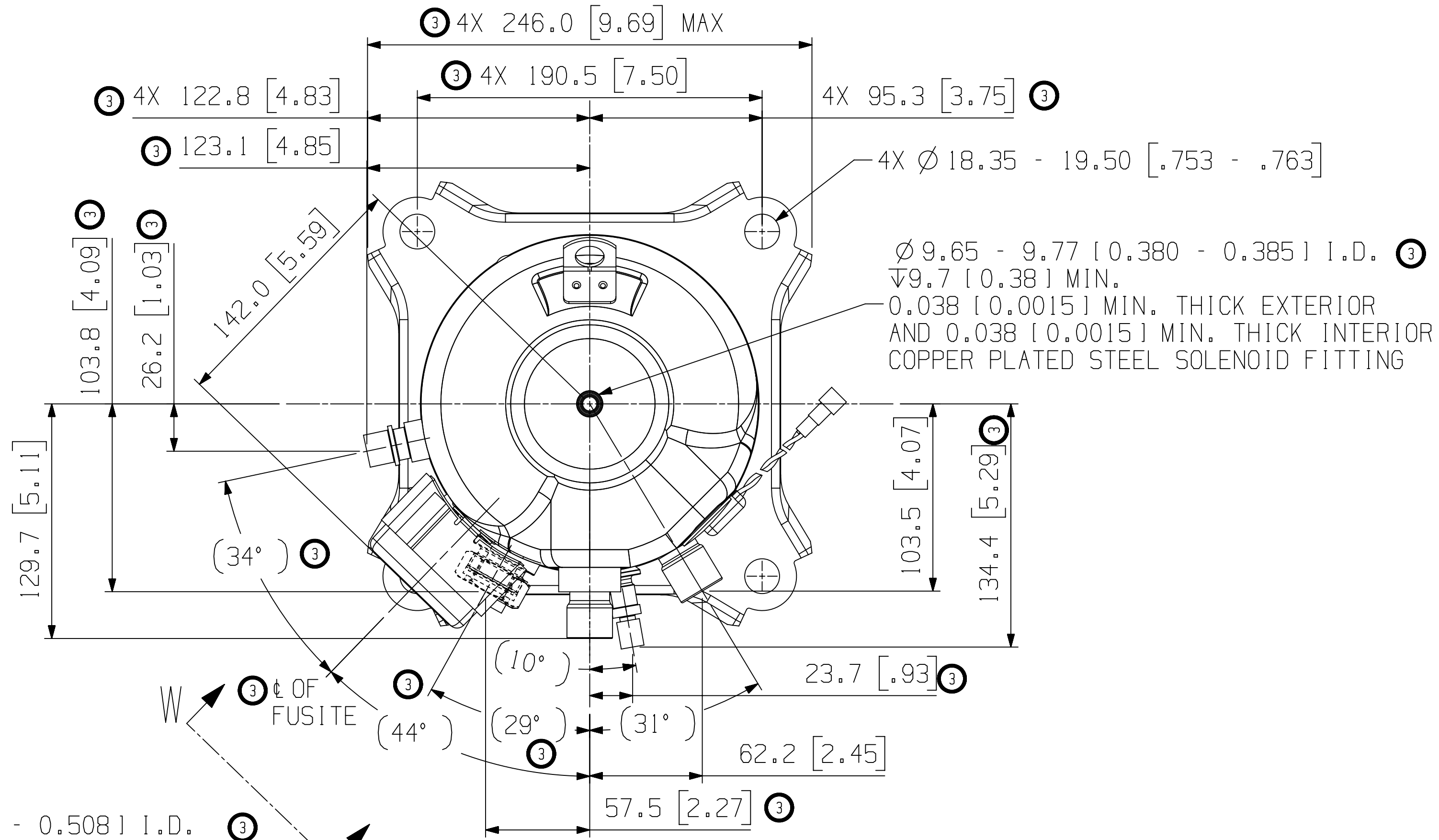
DO NOT SCALE DRAWING

CRITICAL PRODUCT CHARACTERISTICS

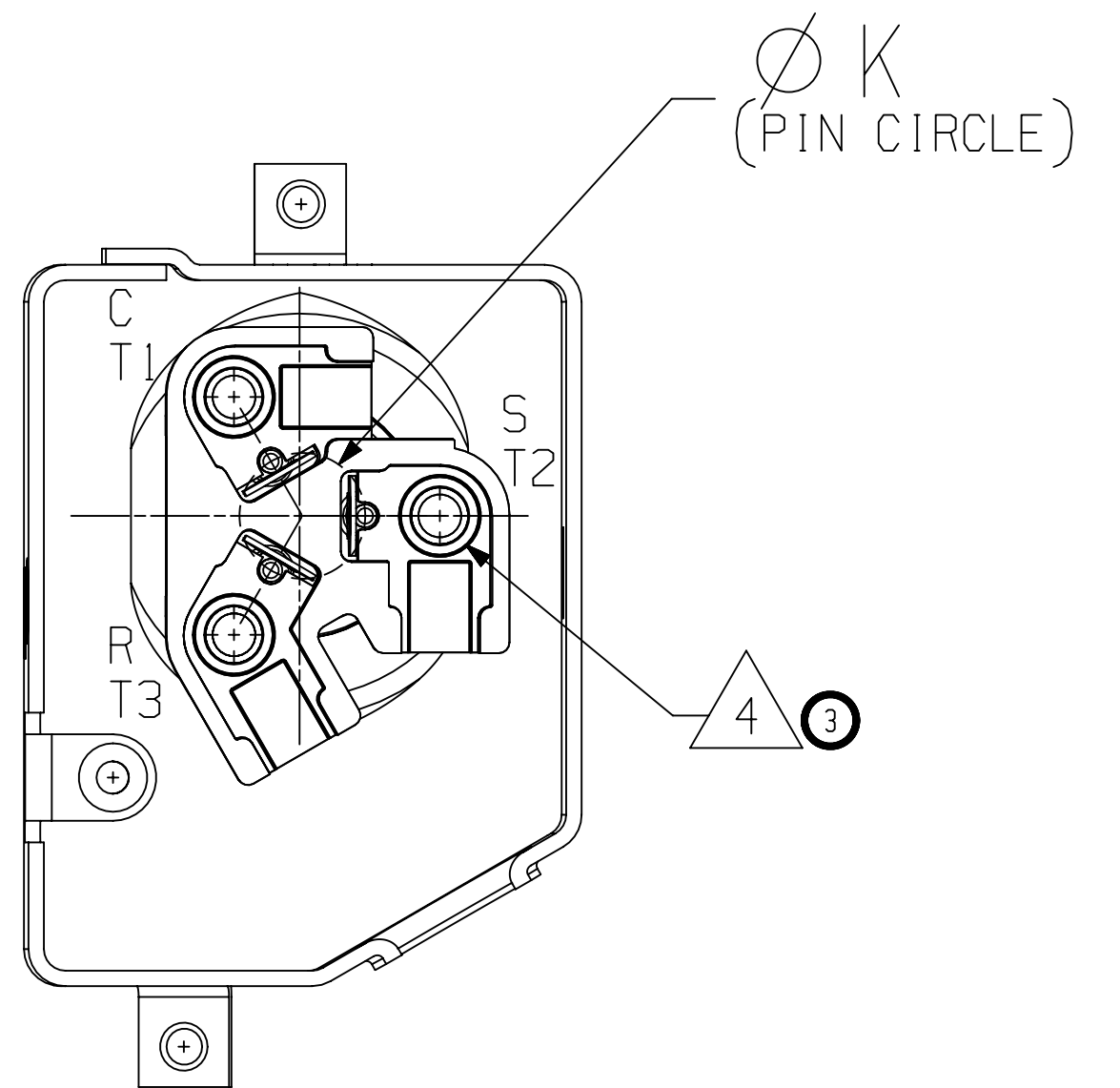
UNLESS OTHERWISE SPECIFIED DIMENSIONS ARE MILLIMETER OR (INCH)

TOLERANCES:
 1-PLACE ± .1
 2-PLACE ± .05
 ANGULAR ± .1

MATERIAL SPECIFICATION	DRAWN BY	SUPERSEDES DWG NO / REV NO
N/A	SRP	497-3600-00 / 002
TITLE	DATE	SCALE
REF DWG-WELD COMP ASSM	08-30-21	1:2
DRAWING NUMBER	SHEET 1 OF 3 DWG	SIZE
497-3600-00	4	

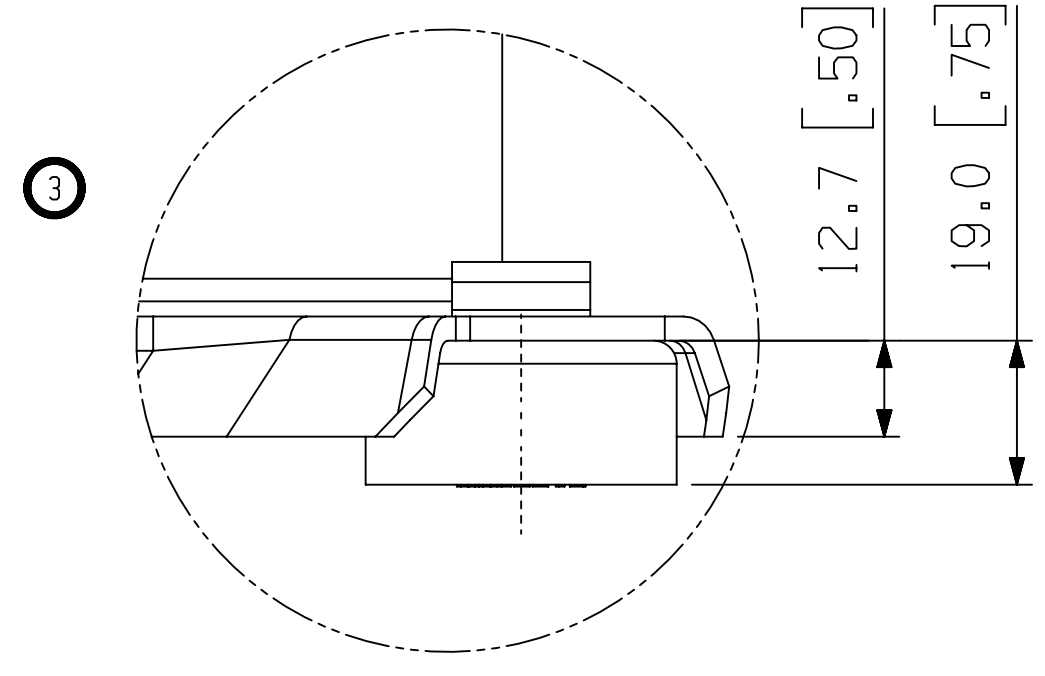
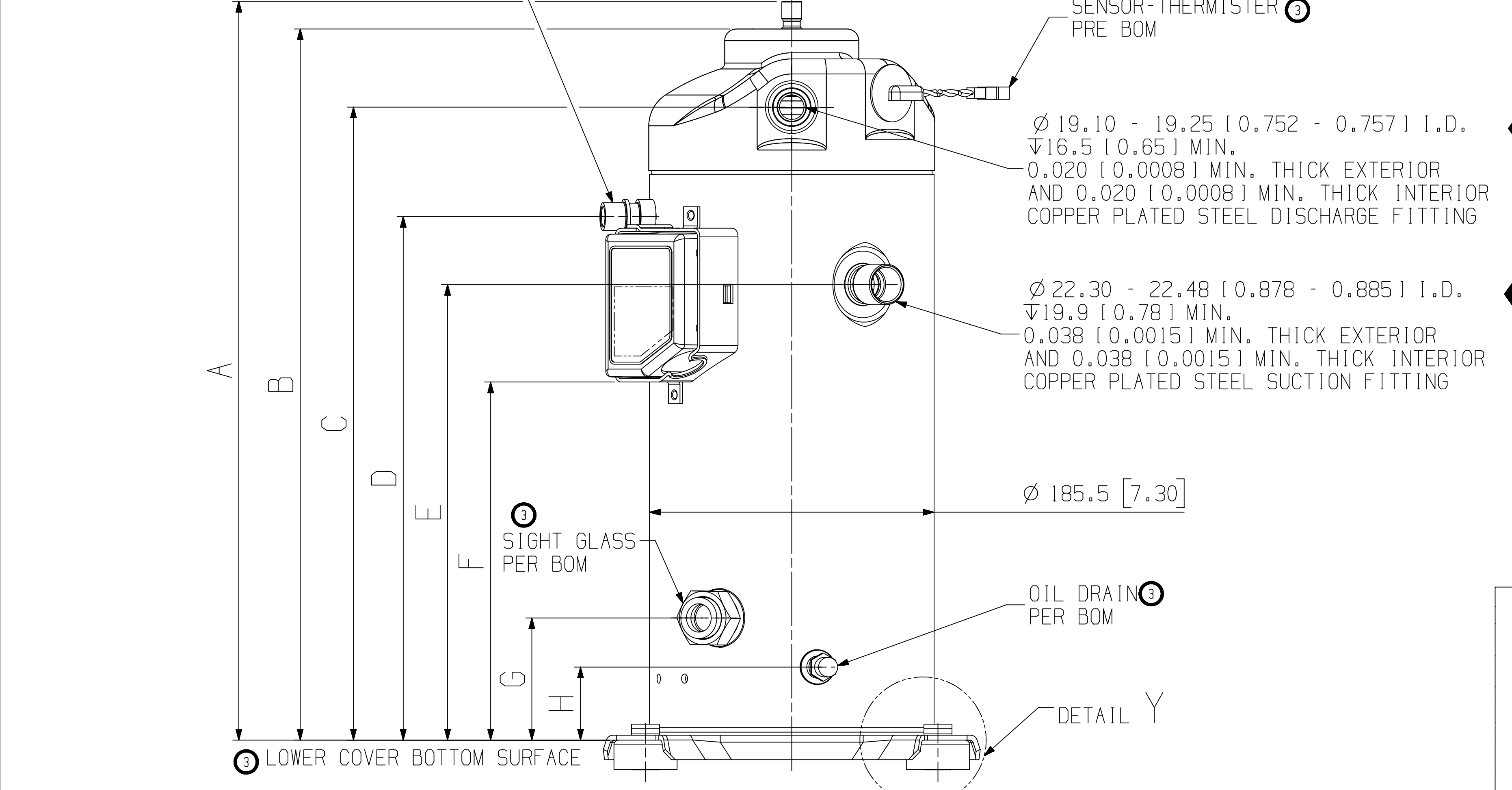


MOTOR TYPE	Ø K PIN CIRCLE
TF5	13.46 [0.529]
TFD TF7 TFE	17.45 [0.687]



3 TERMINAL BOX LAYOUT OPTIONS
TERMINAL BOX COVER NOT SHOWN
VIEW W - W
SCALE 1:1

Ø 12.80 - 12.90 [0.504 - 0.508] I.D. 3
√12.3 [0.48] MIN.
0.010 [0.0004] MIN. THICK EXTERIOR AND
0.010 [0.0004] MIN. THICK INTERIOR
COPPER PLATED STEEL VAPOUR
INJECTION FITTING

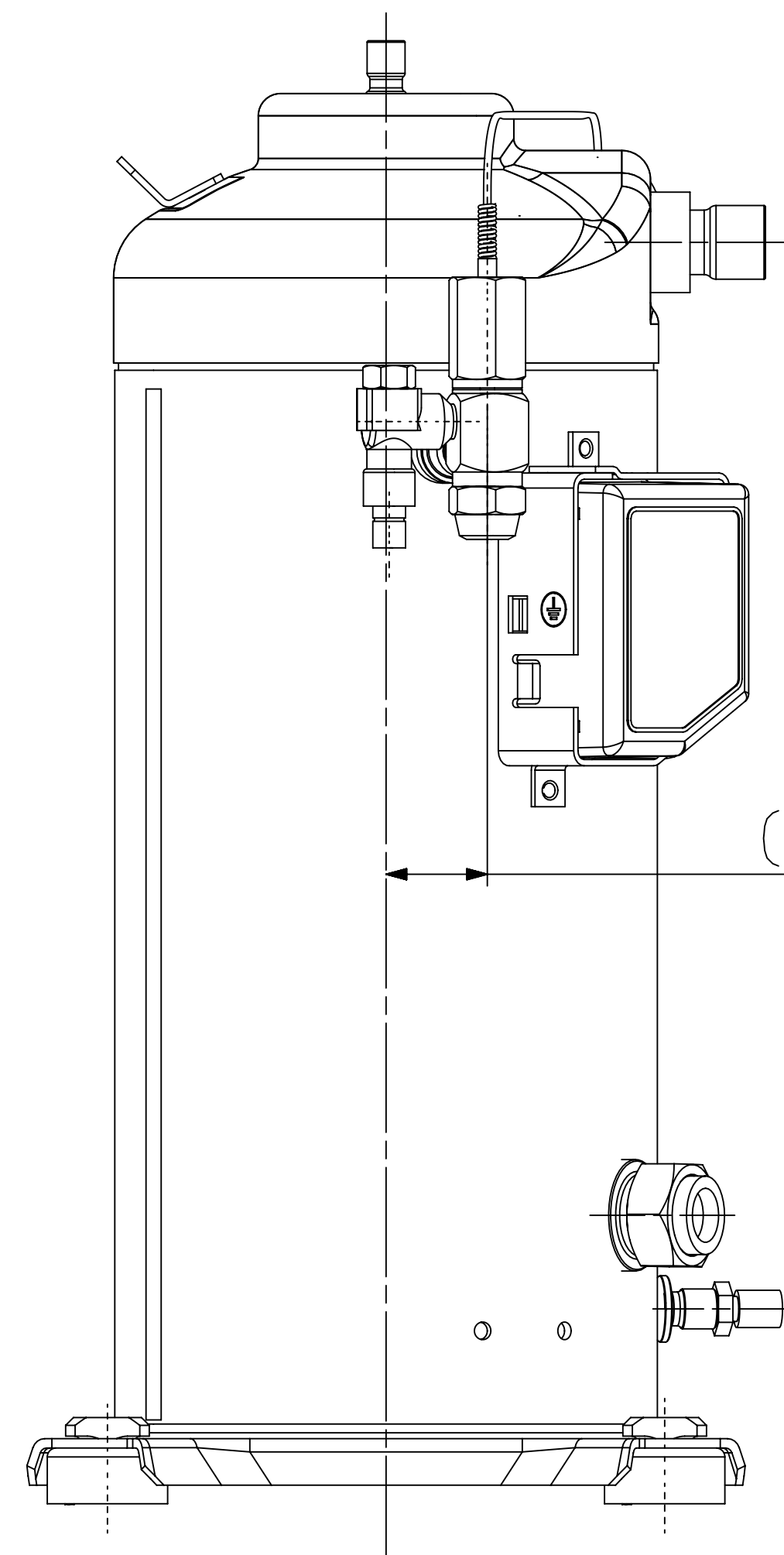
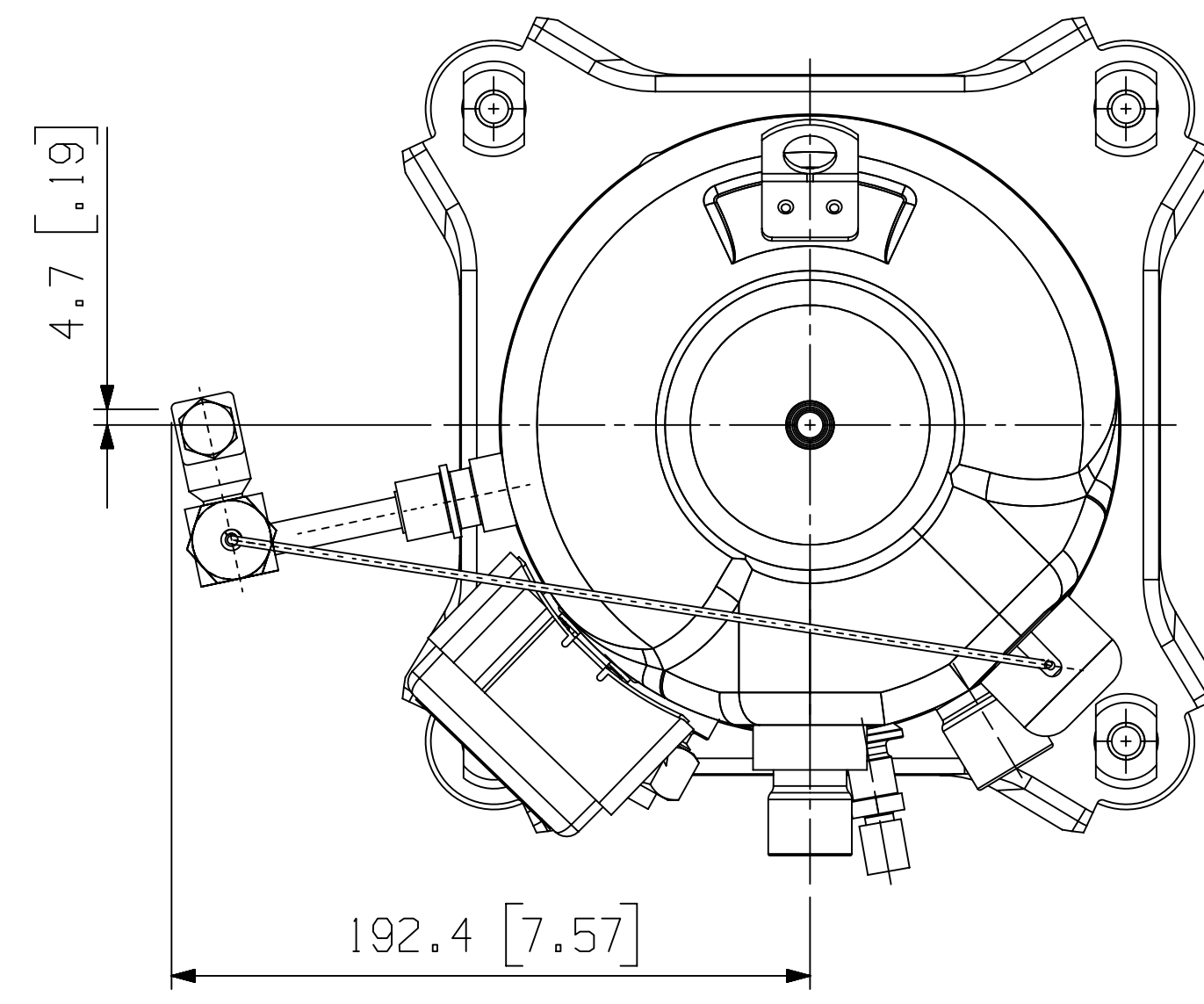


DETAIL Y
SCALE 1:1

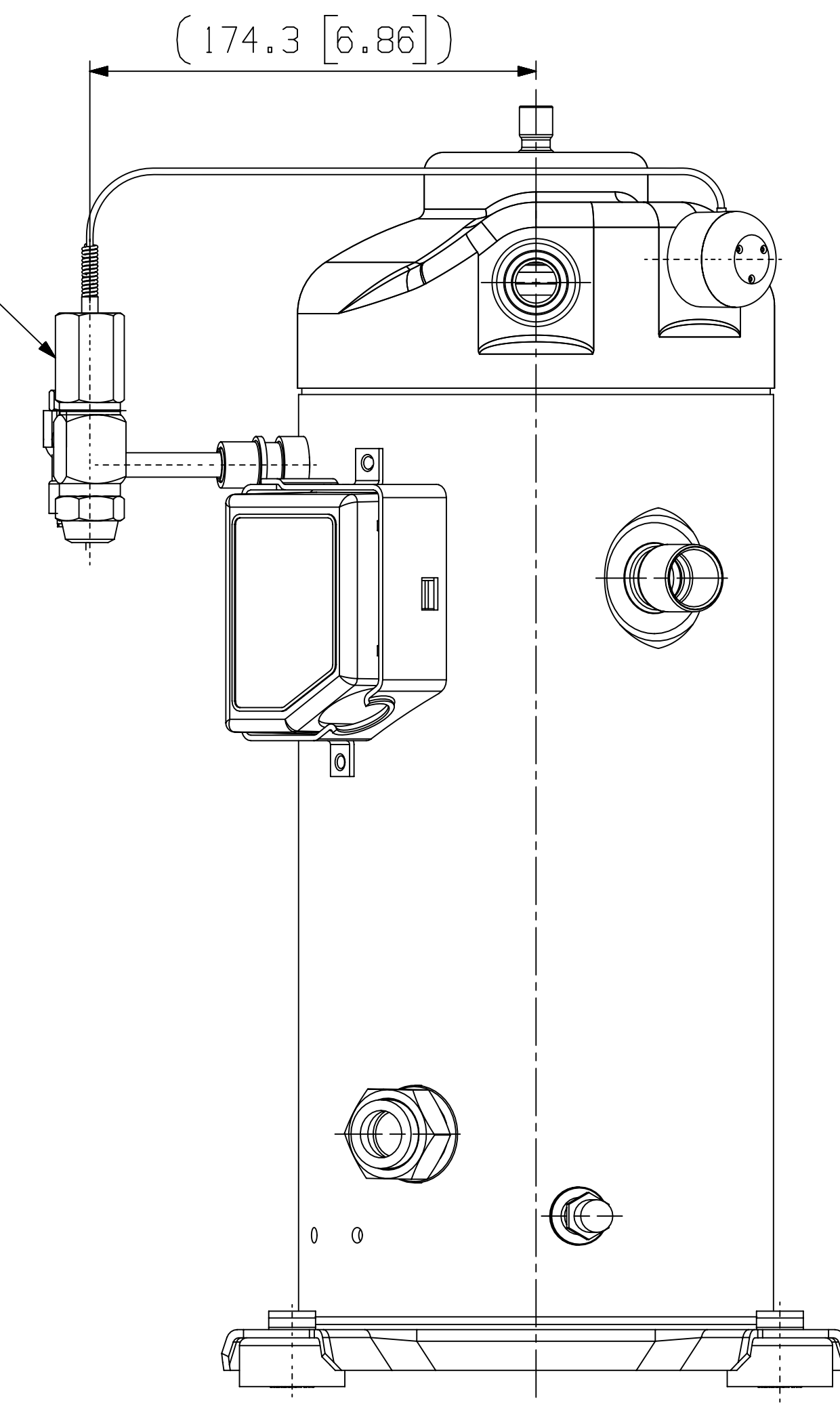


INTERPRET PER ASME
Y14.5M-1994 AND
COPELAND DESIGN
STANDARDS DS2002
DO NOT SCALE DRAWING
CRITICAL PRODUCT
CHARACTERISTICS
UNLESS OTHERWISE SPECIFIED
DIMENSIONS ARE MILLIMETER OR (INCH)
TOLERANCES:
1-PLACE +
2-PLACE +
ANGULAR ±

ECN325307	4	UPDATED TITLE BLOCK	09-11-23		
ECN321503	3	REDRAWN WITH CHANGES	08-26-22	SRP	AMN
ECN004715	0	RELEASED	03-12-12	CX	DC
ENG NOTICE NO.	REV. NO.	REVISIONS	DATE	BY	CHKD
CONFIDENTIALITY NOTICE					
THIS DRAWING AND INFORMATION CONTAINED HEREIN ARE THE EXCLUSIVE PROPERTY OF COPELAND LP AND/OR ITS AFFILIATES (COLLECTIVELY "COPELAND") AND SHALL BE RETURNED UPON DEMAND AND SHALL NOT BE REPRODUCED IN WHOLE OR IN PART, DISCLOSED TO ANYONE ELSE OR USED, WITHOUT THE WRITTEN CONSENT OF COPELAND.					
MATERIAL SPECIFICATION		DRAWN BY	SUPERSEDES DWG NO / REV NO	REV NO	
N/A		DATE	SCALE	DATE FORMAT:	
		08-30-21	1:2	MM-DD-YY	
TITLE			DRAWING NUMBER	SHEET 2 OF 3 DWG	
REF DWG-WELD COMP ASSM			497-3600-00	4	
			SIZE		



DISCHARGE TEMPERATURE
CONTROL VALVE (DTC)
PER BOM



INTERPRET PER ASME
Y14.5M-1994 AND
COPELAND DESIGN
STANDARDS DS2002

DO NOT SCALE DRAWING

CRITICAL PRODUCT
CHARACTERISTICS

UNLESS OTHERWISE SPECIFIED
DIMENSIONS ARE MILLIMETER OR (INCH)

TOLERANCES:
1-PLACE +
2-PLACE ±
ANGULAR ±

ECN325307	4	UPDATED TITLE BLOCK	09-11-23		
ECN321503	3	SHEET ADDED	08-26-22	SRP	AMN
ECN004715	0	RELEASED	03-12-12	CX	DC
ENG NOTICE NO.	REV.NO.	REVISIONS	DATE	BY	CHKD
CONFIDENTIALITY NOTICE					
THIS DRAWING AND INFORMATION CONTAINED HEREIN ARE THE EXCLUSIVE PROPERTY OF COPELAND LP AND/OR ITS AFFILIATES (COLLECTIVELY "COPELAND") AND SHALL BE RETURNED UPON DEMAND AND SHALL NOT BE REPRODUCED IN WHOLE OR IN PART, DISCLOSED TO ANYONE ELSE OR USED, WITHOUT THE WRITTEN CONSENT OF COPELAND.					
MATERIAL SPECIFICATION		DRAWN BY	SUPERSEDES DWG NO /	REV NO	
N/A		SRP	497-3600-00 /	002	
		DATE	SCALE	DATE FORMAT:	
		08-30-21	1:2	MM-DD-YY	
TITLE			DRAWING NUMBER	SHEET 3 OF 3 DWG	
REF DWG-WELD COMP ASSM			497-3600-00	4	
			SIZE		