

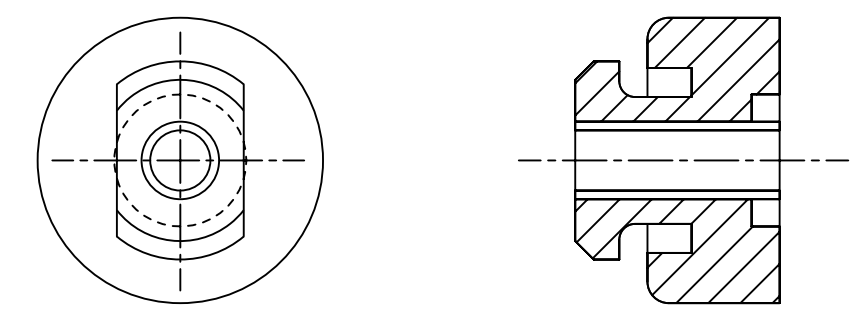
PART NO.	MODEL NUMBER	A ±3.0	B ±3.0	C	D ±3.0	E ±3.0	F ±3.0	G ±3.0	J ±3.0
497-1160-00	ZF25KVE*	451.5 [17.78]	409.6 [16.13]	340.9 [13.42]	296.7 [11.68]	233.2 [9.18]	79.6 [3.13]	47.6 [1.87]	470.0 [18.50]
497-1160-01	YF122KAE*	460.3 [18.12]	418.5 [16.47]	340.9 [13.42]	296.7 [11.68]	233.2 [9.18]	79.6 [3.13]	47.6 [1.87]	478.9 [18.85]

SPECIFICATIONS	
ES NO.	DESCRIPTION
ES92-155	CONVERSION-METRIC

NOTES:

- ① ALL TOLERANCES 1.50 [0.060] UNLESS OTHERWISE SPECIFIED.
- DUE TO ACCUMULATED ASSEMBLY TOLERANCES THE LISTED COMPONENTS MAY VARY FROM THE MOUNTING HOLES AS SHOWN BELOW:
- ◆ SUCTION FITTING : ±3.0 [0.12]
◆ DISCHARGE FITTING: ±3.0 [0.12]
- 2. TUBE ENDS MUST BE PLUGGED.
- ③ TORQUE T-BLOCK SCREWS TO 2.4-2.6 Nm [21-23 IN-LBS]
- ④ FOR MORE INFORMATION SEE PRODUCT CATALOG.
- 5. FULL HEIGHT OF COMPRESSOR DOES NOT INCLUDE MOUNTING SPACERS.
- 6. MOUNTING KIT:

GROMMET DUROMETER	4 FOOT KIT
35-45	527-0116-00



COMPRESSOR WIRING DIAGRAM

USE COPPER CONDUCTORS ONLY. USE MINIMUM 75° C WIRE FOR AMPACITY DETERMINATION. INTERNAL MOTOR PROTECTION - ALLOW TIME FOR RESET. OVERCURRENT PROTECTION DEVICE RATING AND TYPE MUST BE IN ACCORDANCE WITH REGULATORY AGENCY END PRODUCT APPROVALS - SEE SYSTEM NAMEPLATE. CRANKCASE HEATER, WHEN APPLIED, MUST BE CONNECTED ONLY TO ITS RATED VOLTAGE. TO CORRECT IMPROPER ROTATION OF THREE PHASE MODELS, SWITCH ANY TWO SUPPLY LINES. REFER TO THE APPLICABLE SYSTEM WIRING DIAGRAM.

005-1213-00
8-06

ECN319090	6	REDRAWN & RELEASED -01; ADDED SHEET 3	01-09-24	VVP	AMN
ECN002493	0	RELEASED	09-14-11	AMN	DC
ENG NOTICE NO.	REV. NO.	REVISIONS	DATE	BY	CHKD

CONFIDENTIALITY NOTICE

THIS DRAWING AND INFORMATION CONTAINED HEREIN ARE THE EXCLUSIVE PROPERTY OF COPELAND LP AND/OR ITS AFFILIATES (COLLECTIVELY "COPELAND") AND SHALL BE RETURNED UPON DEMAND AND SHALL NOT BE REPRODUCED IN WHOLE OR IN PART, DISCLOSED TO ANYONE ELSE OR USED, WITHOUT THE WRITTEN CONSENT OF COPELAND.

COPELAND

INTERPRET PER ASME Y14.5M-1994 AND COPELAND DESIGN STANDARDS DS2002

DO NOT SCALE DRAWING

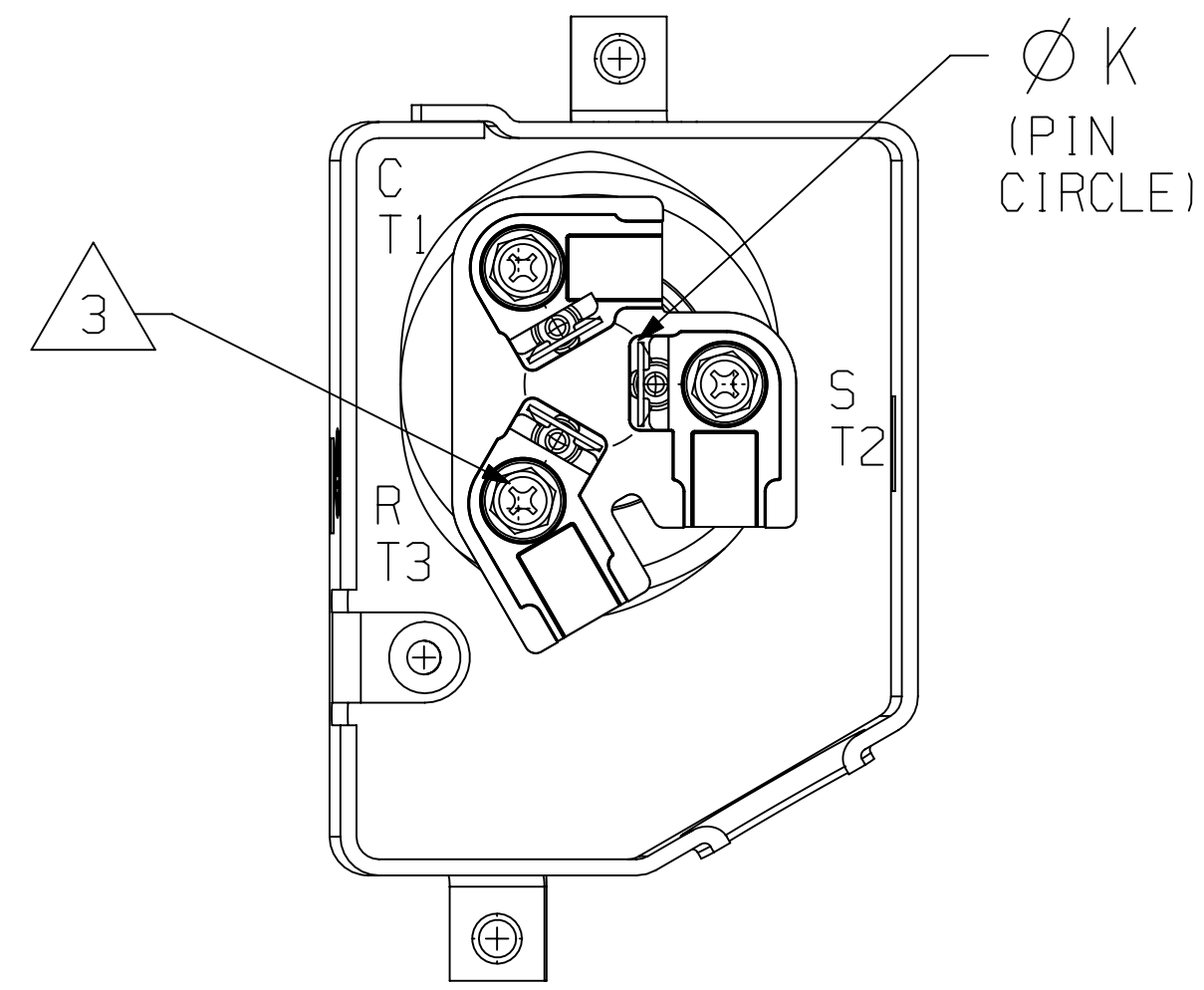
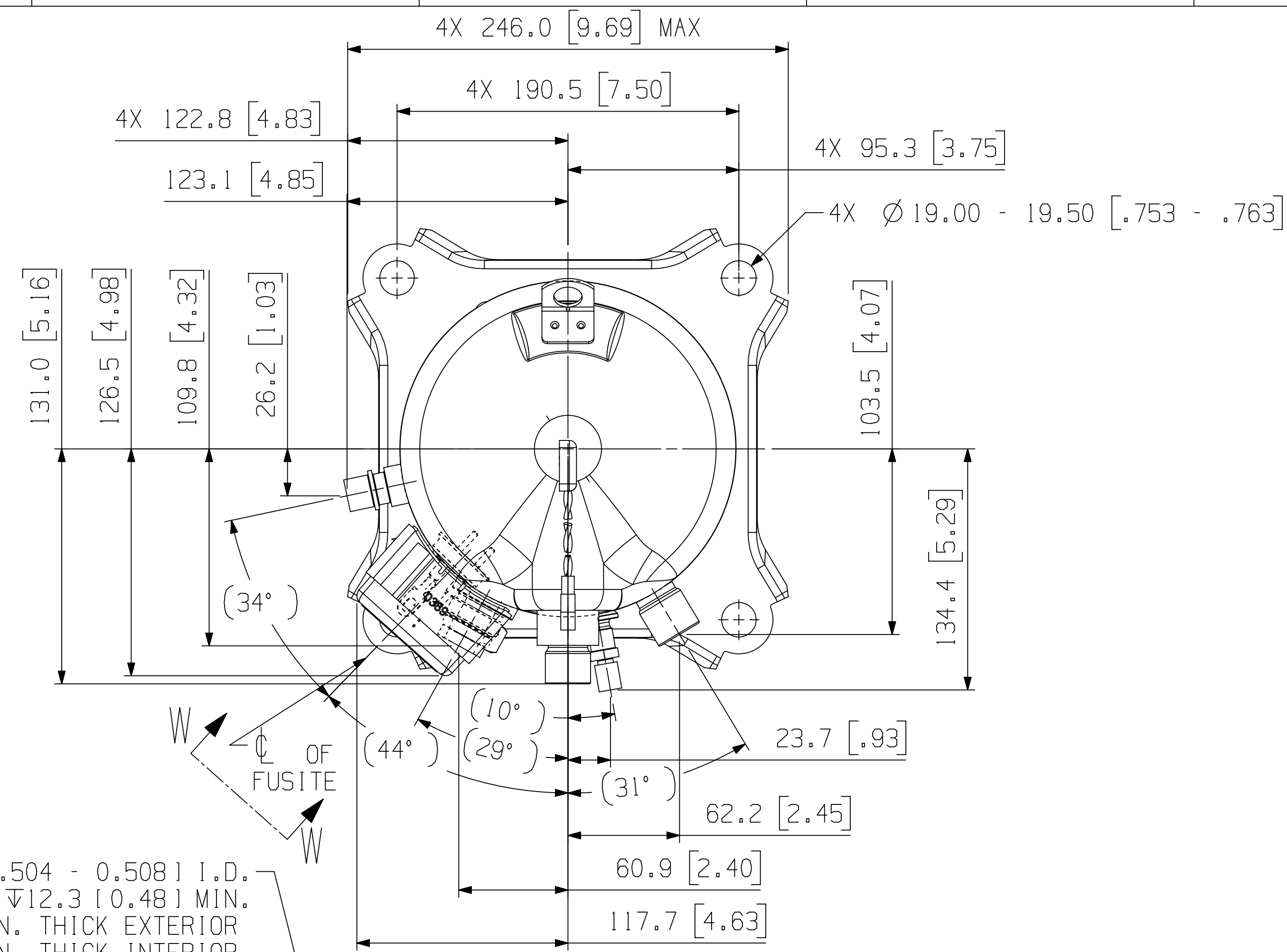
◆ CRITICAL PRODUCT CHARACTERISTICS

UNLESS OTHERWISE SPECIFIED DIMENSIONS ARE MILLIMETER OR (INCH)

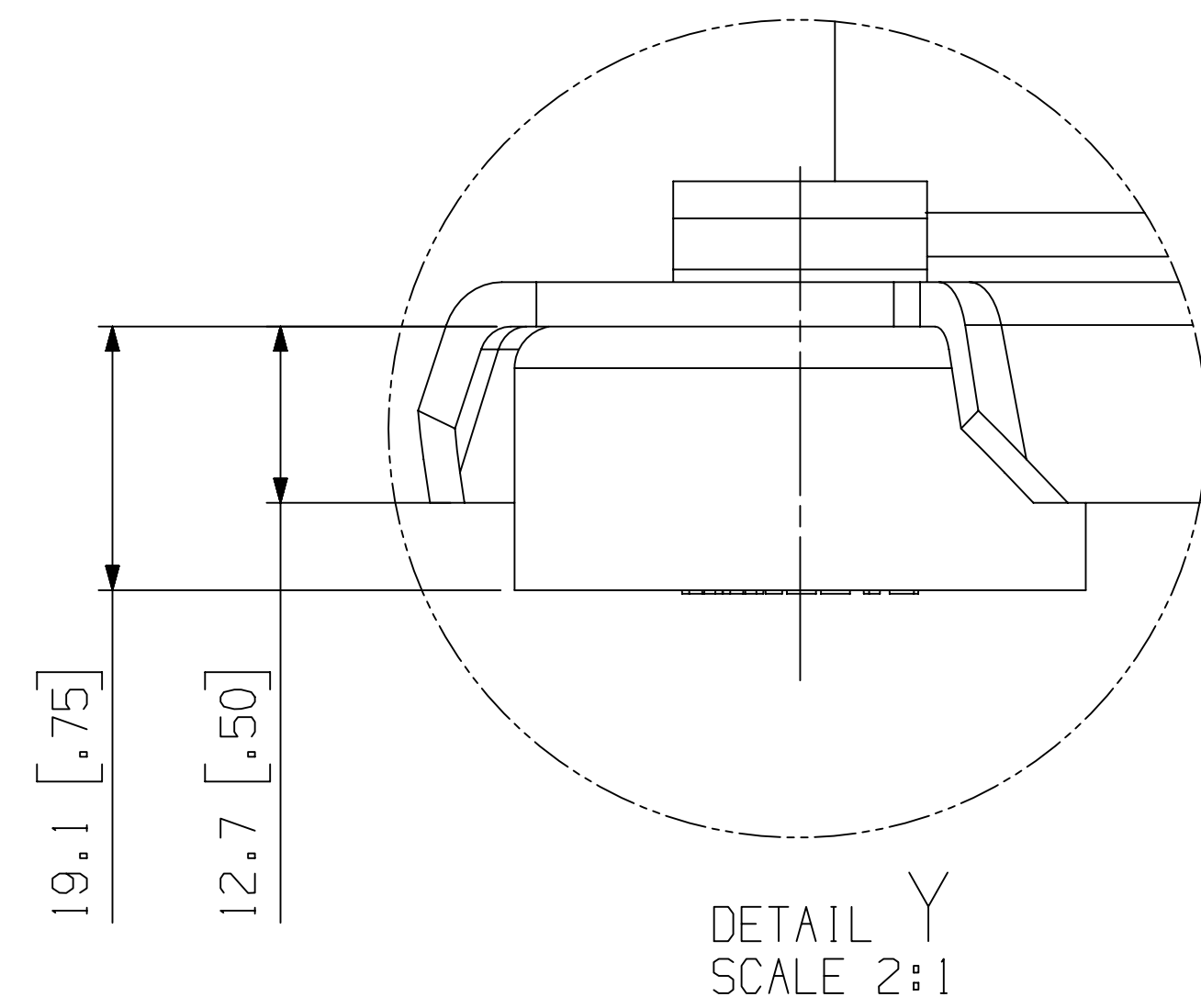
TOLERANCES:
1-PLACE ±
2-PLACE ±
ANGULAR ±

①

MATERIAL SPECIFICATION	DRAWN BY	SUPERSEDES DWG NO / REV NO
N/A	VVP	497-1160-00 / 005
TITLE	DATE	SCALE
REF DWG-WELD COMP ASSM	01-09-24	1:1
DRAWING NUMBER	SHEET 1 OF 3	DWG SIZE
497-1160-00	4	4



TERMINAL BOX LAYOUT OPTION
TERMINAL BOX COVER NOT SHOWN
VIEW W - W
SCALE 1:1

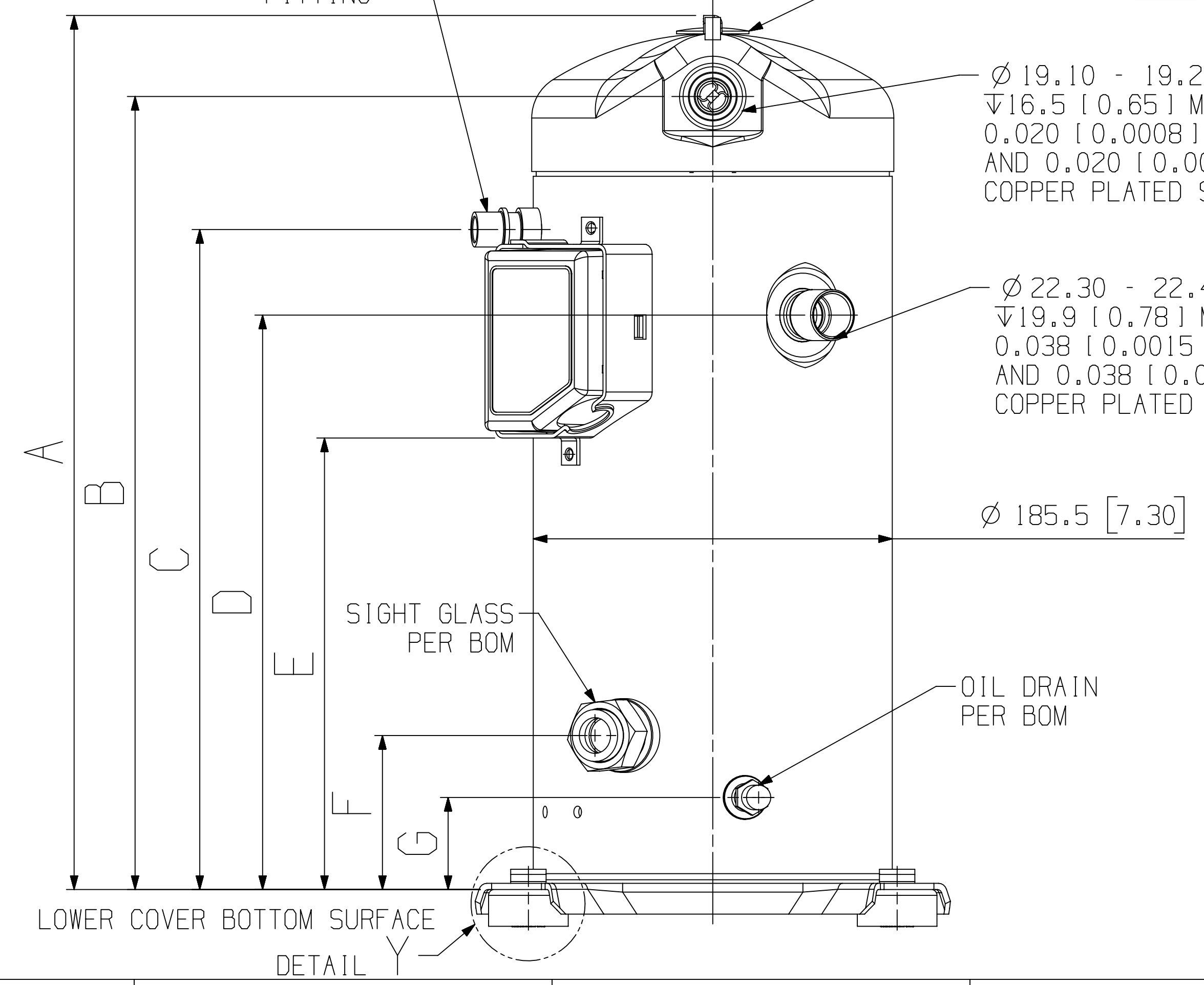


DETAIL Y
SCALE 2:1

Ø 12.80 - 12.90 [0.504 - 0.508] I.D.
∇12.3 [0.48] MIN.
0.010 [0.0004] MIN. THICK EXTERIOR
AND 0.010 [0.0004] MIN. THICK INTERIOR
COPPER PLATED STEEL VAPOUR INJECTION
FITTING

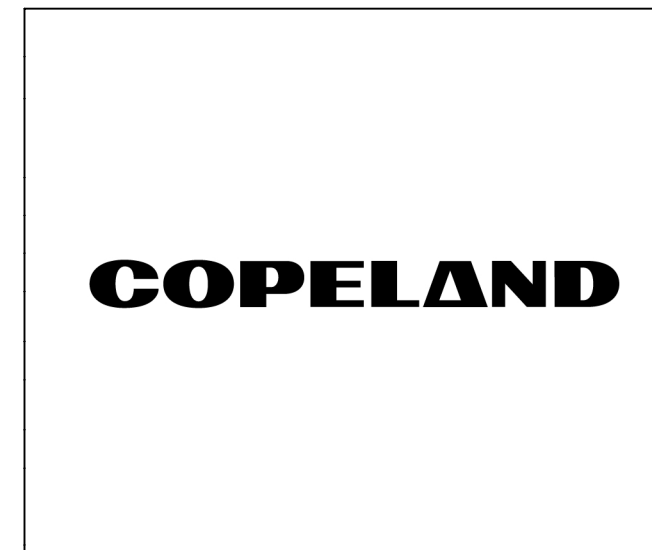
THERMOSTAT TUBE 4
Ø 19.10 - 19.25 [0.752 - 0.757] I.D. ◆
∇16.5 [0.65] MIN.
0.020 [0.0008] MIN. THICK EXTERIOR
AND 0.020 [0.0008] MIN. THICK INTERIOR
COPPER PLATED STEEL DISCHARGE FITTING

Ø 22.30 - 22.48 [0.878 - 0.885] I.D. ◆
∇19.9 [0.78] MIN.
0.038 [0.0015] MIN. THICK EXTERIOR
AND 0.038 [0.0015] MIN. THICK INTERIOR
COPPER PLATED STEEL SUCTION FITTING



DETAIL Y

MOTOR TYPE	Ø K PIN CIRCLE
TF5	13.46 [0.530]
TF7 TFD TFE	17.45 [0.687]



INTERPRET PER ASME
Y14.5M-1994 AND
COPELAND DESIGN
STANDARDS DS2002

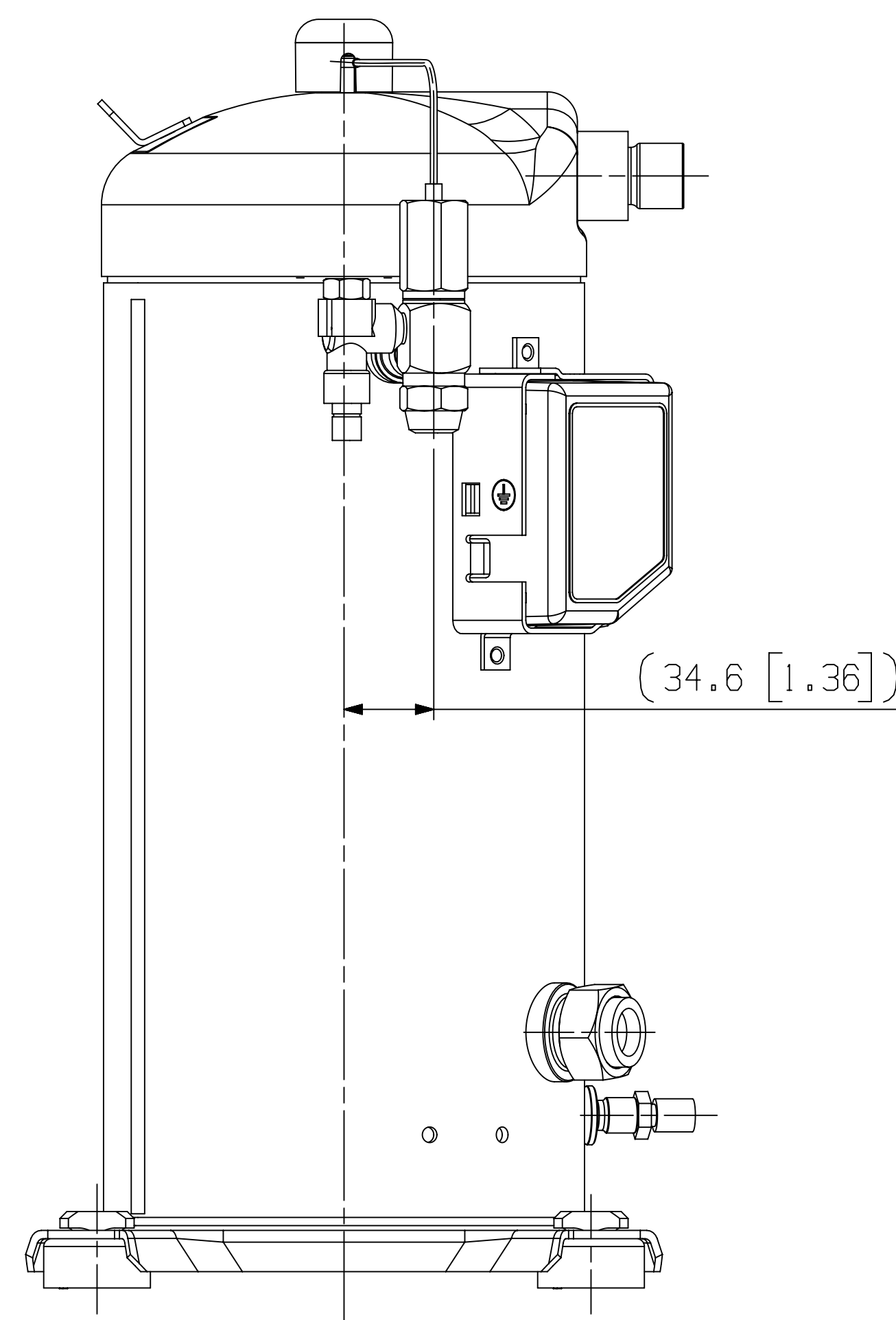
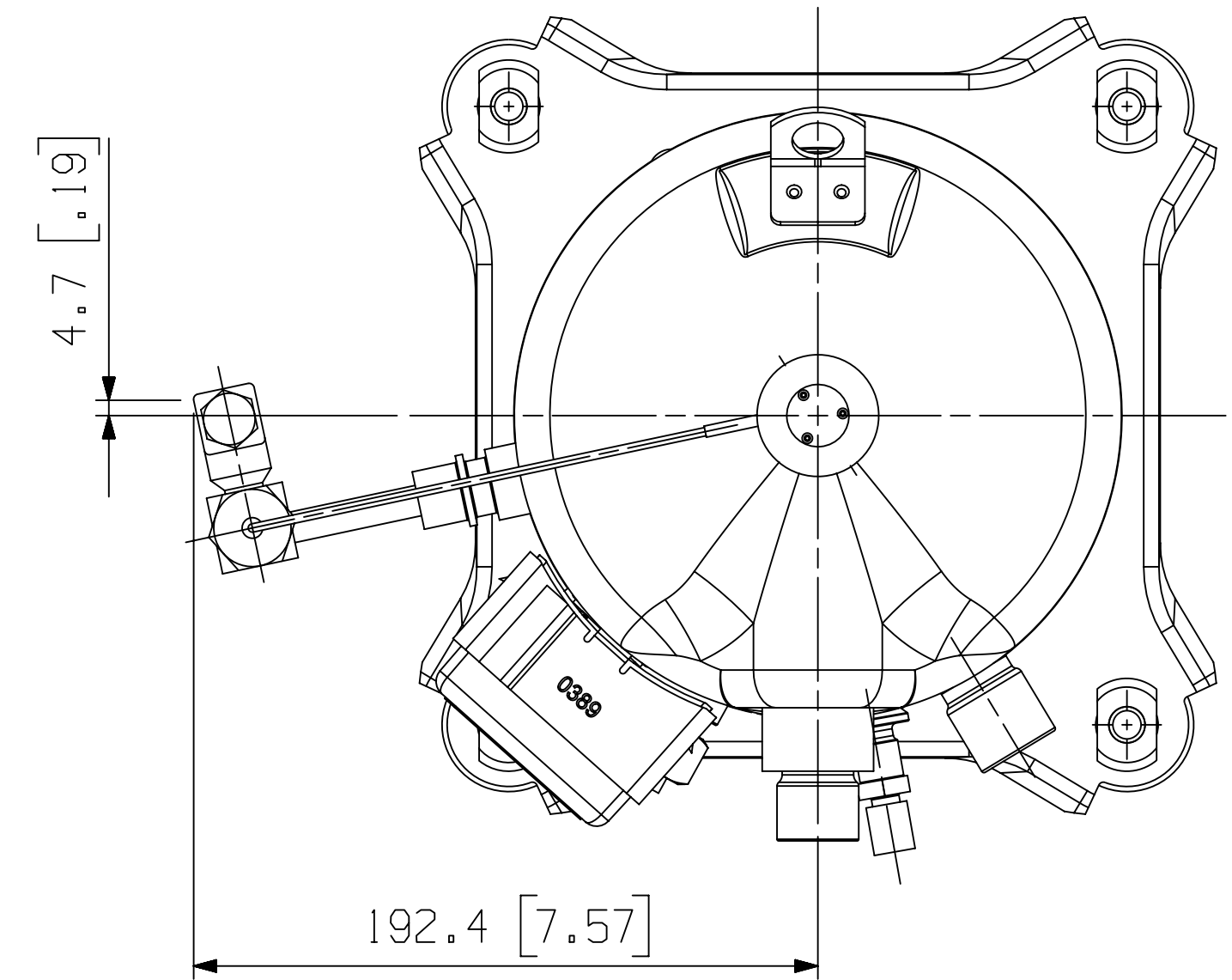
DO NOT SCALE DRAWING

CRITICAL PRODUCT CHARACTERISTICS

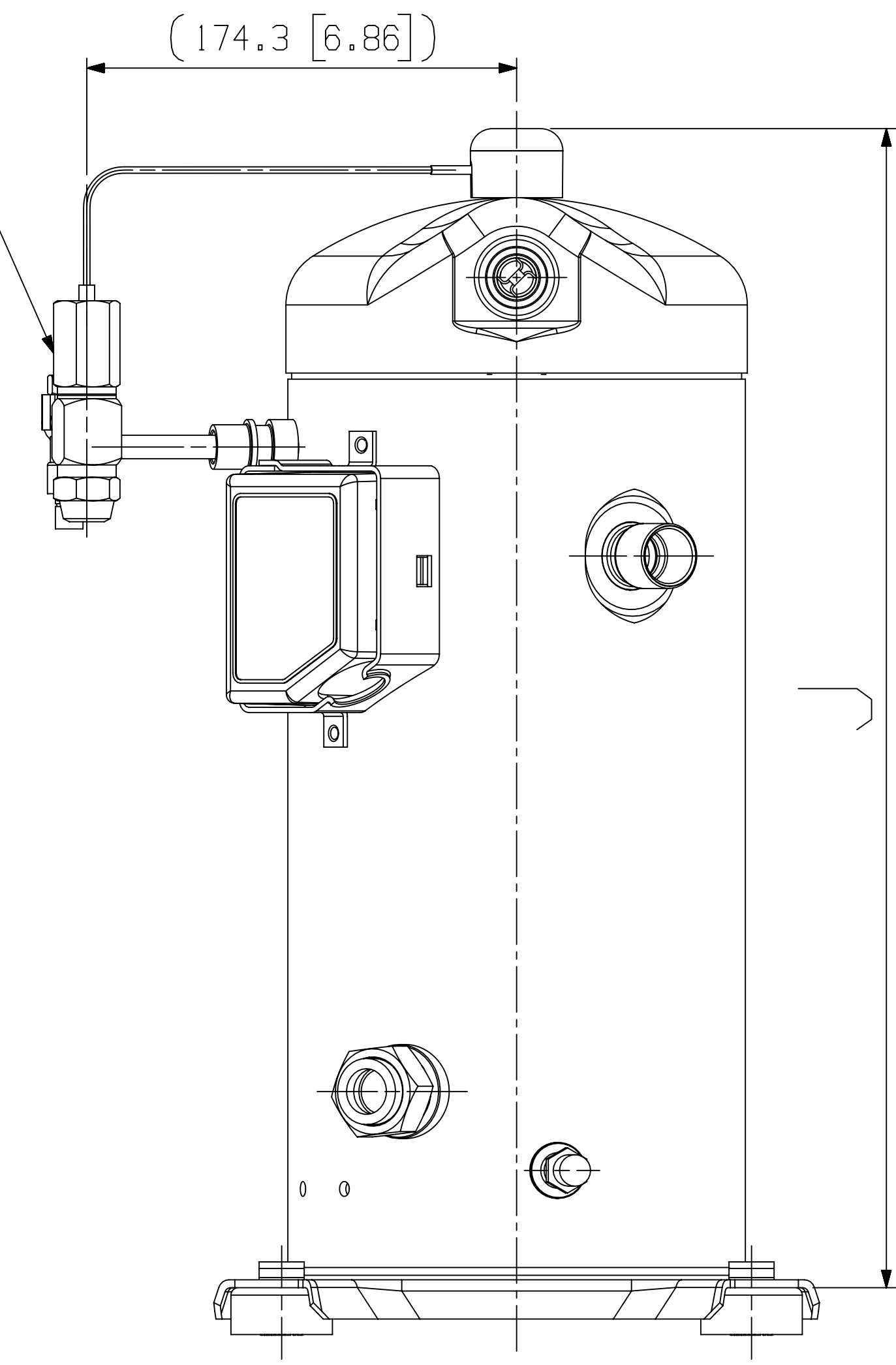
UNLESS OTHERWISE SPECIFIED
DIMENSIONS ARE MILLIMETER OR (INCH)

TOLERANCES:
1-PLACE :
2-PLACE :
ANGULAR :

ECN319090	6	ADDED SHEET 3; SEE SHEET 1	01-09-24	VVP	AMN
ECN002493	0	RELEASED	09-14-11	AMN	DC
ENG NOTICE NO.	REV.NO.	REVISIONS	DATE	BY	CHKD
CONFIDENTIALITY NOTICE					
THIS DRAWING AND INFORMATION CONTAINED HEREIN ARE THE EXCLUSIVE PROPERTY OF COPELAND LP AND/OR ITS AFFILIATES (COLLECTIVELY "COPELAND") AND SHALL BE RETURNED UPON DEMAND AND SHALL NOT BE REPRODUCED IN WHOLE OR IN PART, DISCLOSED TO ANYONE ELSE OR USED, WITHOUT THE WRITTEN CONSENT OF COPELAND.					
MATERIAL SPECIFICATION		DRAWN BY	SUPERSEDES DWG NO /	REV NO	
N/A		VVP	497-1160-00 /	005	
TITLE		DATE	SCALE	DATE FORMAT:	
REF DWG-WELD COMP ASSM		01-09-24	1:2	MM-DD-YY	
DRAWING NUMBER			SHEET 2 OF 3 DWG		4
497-1160-00					SIZE



DISCHARGE TEMPERATURE
CONTROL VALVE (DTC)
PER BOM



INTERPRET PER ASME
Y14.5M-1994 AND
COPELAND DESIGN
STANDARDS DS2002

DO NOT SCALE DRAWING

CRITICAL PRODUCT
CHARACTERISTICS

UNLESS OTHERWISE SPECIFIED
DIMENSIONS ARE MILLIMETER OR (INCH)

TOLERANCES:
1-PLACE :
2-PLACE :
ANGULAR :

ECN319090	6	ADDED SHEET 3; SEE SHEET 1	01-09-24	VVP	AMN
ENG NOTICE NO.	REV. NO.	REVISIONS	DATE	BY	CHKD
CONFIDENTIALITY NOTICE					
THIS DRAWING AND INFORMATION CONTAINED HEREIN ARE THE EXCLUSIVE PROPERTY OF COPELAND LP AND/OR ITS AFFILIATES (COLLECTIVELY "COPELAND") AND SHALL BE RETURNED UPON DEMAND AND SHALL NOT BE REPRODUCED IN WHOLE OR IN PART, DISCLOSED TO ANYONE ELSE OR USED, WITHOUT THE WRITTEN CONSENT OF COPELAND.					
MATERIAL SPECIFICATION		DRAWN BY	SUPERSEDES DWG NO /	REV NO	
N/A		VVP	---	/ -	
		DATE	SCALE	DATE FORMAT:	
		01-09-24	1:1	MM-DD-YY	
TITLE			DRAWING NUMBER	SHEET 3 OF 3 DWG	
REF DWG-WELD COMP ASSM			497-1160-00	4	
			SIZE		