

PART NO.	MODEL NUMBER	A ±3.0	B ±3.0	C ±3.0
497-3599-00	ZF25K	442.0 [17.40]	409.6 [16.13]	470.0 [18.51]
497-3599-01	ZF28K	451.0 [17.76]	418.6 [16.48]	479.0 [18.85]

SPECIFICATIONS	
ES NO.	DESCRIPTION
ES81-159	CLEANLINESS
ES81-250	IDENTIFICATION
ES92-155	CONVERSION-METRIC

NOTES:

① ALL TOLERANCES ±1.50 [0.060]
UNLESS OTHERWISE SPECIFIED.

DUE TO ACCUMULATED ASSEMBLY TOLERANCES
THE LISTED COMPONENTS MAY VARY FROM
THE MOUNTING HOLES AS SHOWN BELOW:

② SUCTION FITTING: ±3.0 [0.12]
DISCHARGE FITTING: ±3.0 [0.12]

2. TUBE ENDS MUST BE PLUGGED.

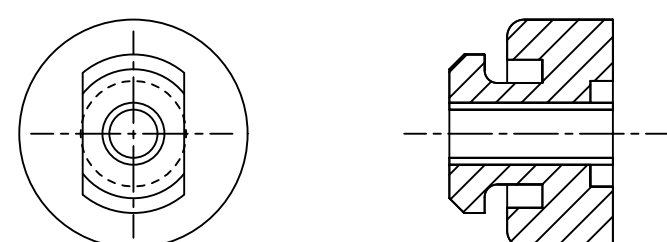
③ TORQUE T-BLOCK SCREWS TO 2.4-2.6 Nm
[21-23 IN LBS].

4. FOR MORE INFORMATION SEE PRODUCT CATALOG.

5. FULL HEIGHT OF COMPRESSOR DOES NOT
INCLUDE MOUNTING SPACERS.

6. MOUNTING KIT:

GROMMET DUROMETER	4 FOOT KIT
35-45	527-0116-00



③ ②

COMPRESSOR WIRING DIAGRAM

USE COPPER CONDUCTORS ONLY. USE MINIMUM 75° C WIRE FOR AMPACITY DETERMINATION. INTERNAL MOTOR PROTECTION - ALLOW TIME FOR RESET. OVERCURRENT PROTECTION DEVICE RATING AND TYPE MUST BE IN ACCORDANCE WITH REGULATORY AGENCY END PRODUCT APPROVALS - SEE SYSTEM NAMEPLATE. CRANKCASE HEATER, WHEN APPLIED, MUST BE CONNECTED ONLY TO ITS RATED VOLTAGE. TO CORRECT IMPROPER ROTATION OF THREE PHASE MODELS, SWITCH ANY TWO SUPPLY LINES. REFER TO THE APPLICABLE SYSTEM WIRING DIAGRAM.

XX 005-1213-00
B-06

ECN	REV. NO.	REVISIONS	DATE	BY	CHKD
ECN321503	3	REMOVED ES-SPECIFICATIONS	08-30-22	SRP	AMN
ECN301663	2	REDRAWN & UPDATE DIMENSIONS	03-28-17	AZ	LG
ECN003585	0	RELEASED	03-05-12	CX	DC

ENG NOTICE NO.	REV. NO.	REVISIONS	DATE	BY	CHKD
CONFIDENTIALITY NOTICE					
THIS DRAWING AND INFORMATION CONTAINED HEREIN ARE THE EXCLUSIVE PROPERTY OF EMERSON CLIMATE TECHNOLOGIES, INC AND/OR ITS AFFILIATES (COLLECTIVELY "EMERSON") AND SHALL BE RETURNED UPON DEMAND AND SHALL NOT BE REPRODUCED IN WHOLE OR IN PART, DISCLOSED TO ANYONE ELSE OR USED, WITHOUT THE WRITTEN CONSENT OF EMERSON.					
MATERIAL SPECIFICATION		DRAWN BY	SUPERSEDES DWG NO / REV NO	DATE	
N/A		AZ	497-3599-00 / 001	DATE	SCALE
TITLE		DATE	1:2	DATE FORMAT:	MM-DD-YY
REF DWG-WELD COMP ASSM		DRAWING NUMBER	497-3599-00	SHEET 2 OF 3 DWG	4
		SIZE			

EMERSON
Copeland

INTERPRET PER ASME Y14.5M-1994 AND EMERSON DESIGN STANDARDS DS2002

DO NOT SCALE DRAWING

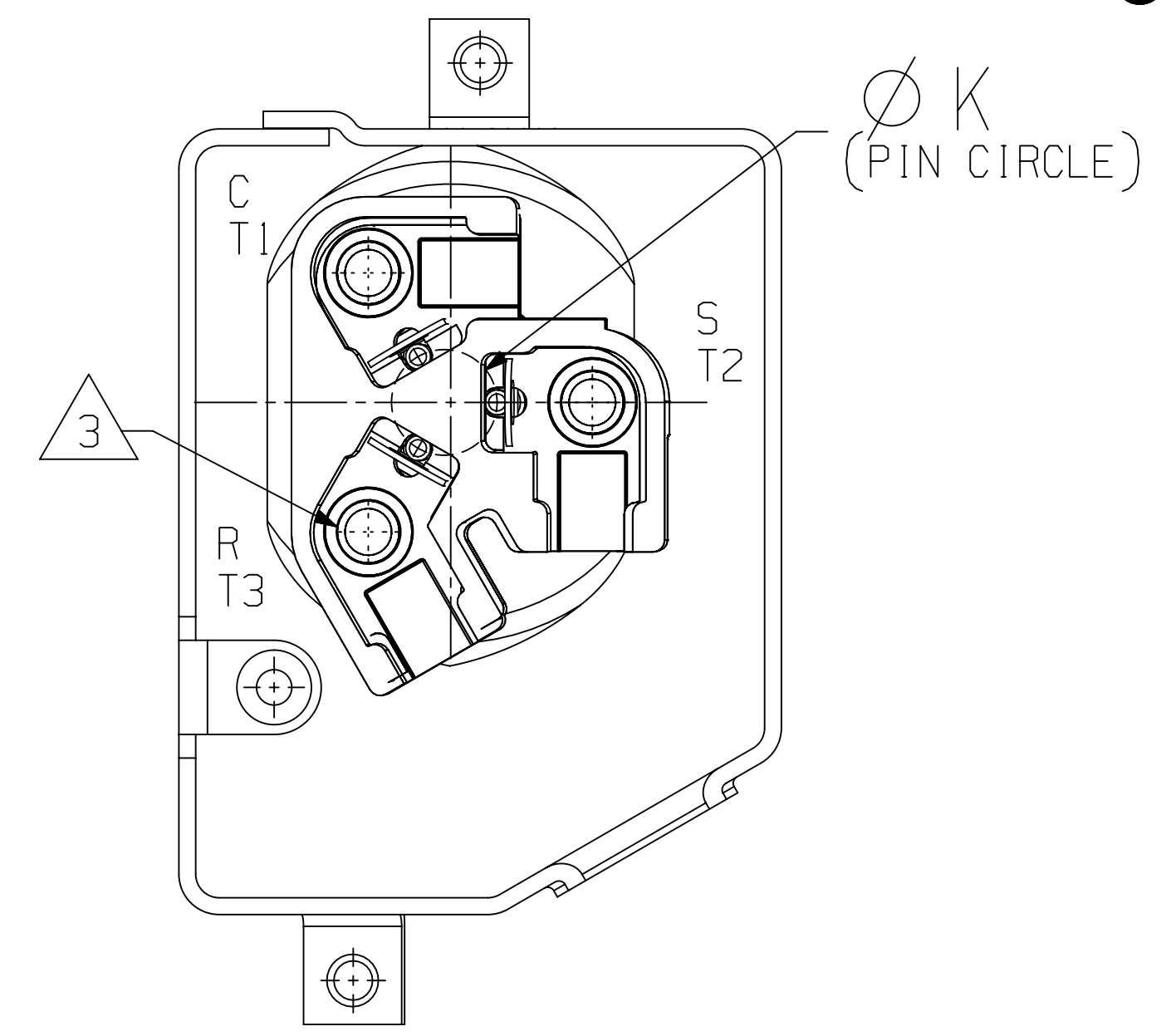
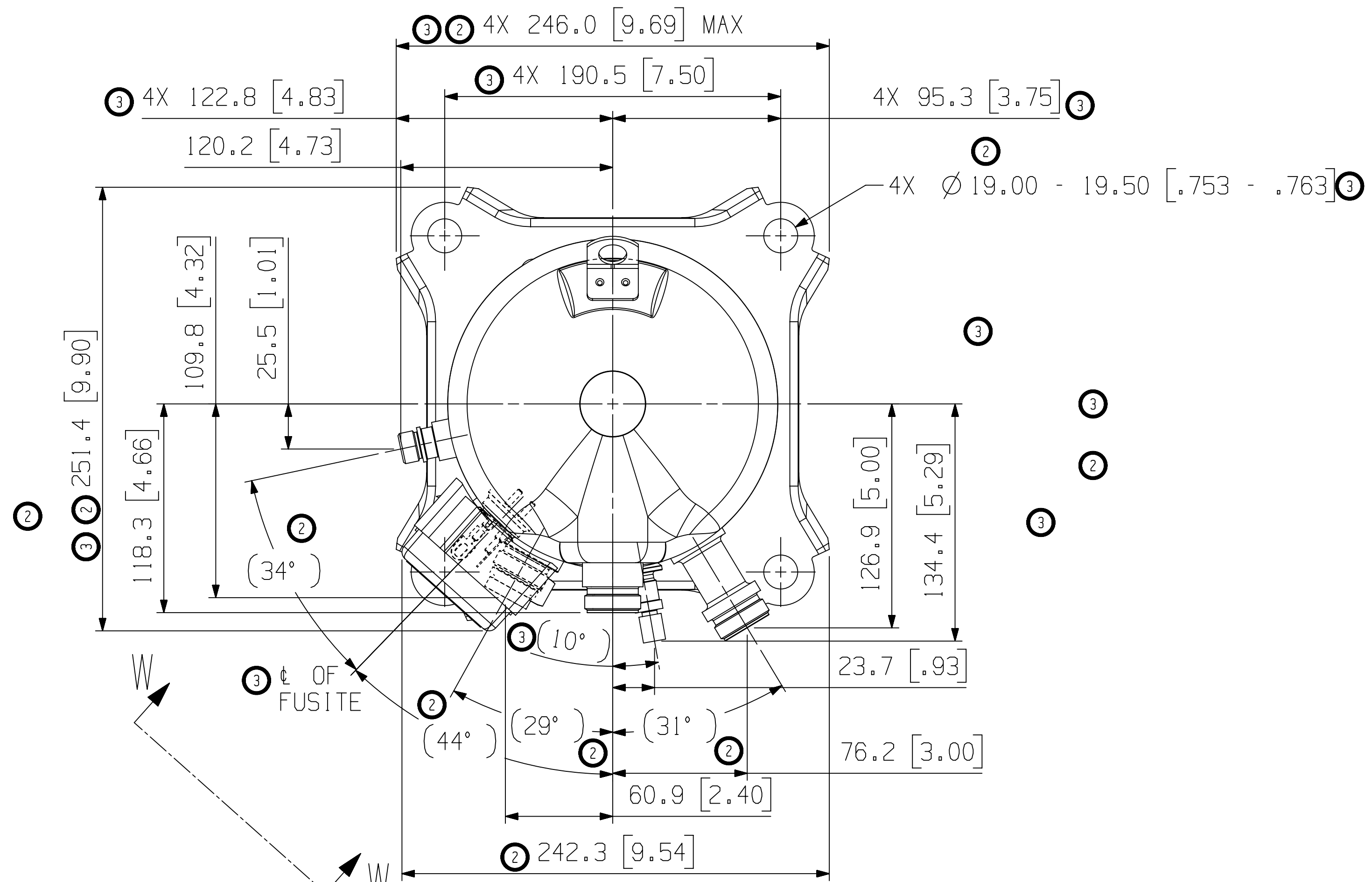
CRITICAL PRODUCT CHARACTERISTICS

UNLESS OTHERWISE SPECIFIED DIMENSIONS ARE MILLIMETER OR (INCH)

TOLERANCES:
1-PLACE ±
2-PLACE ±
ANGULAR ±

①

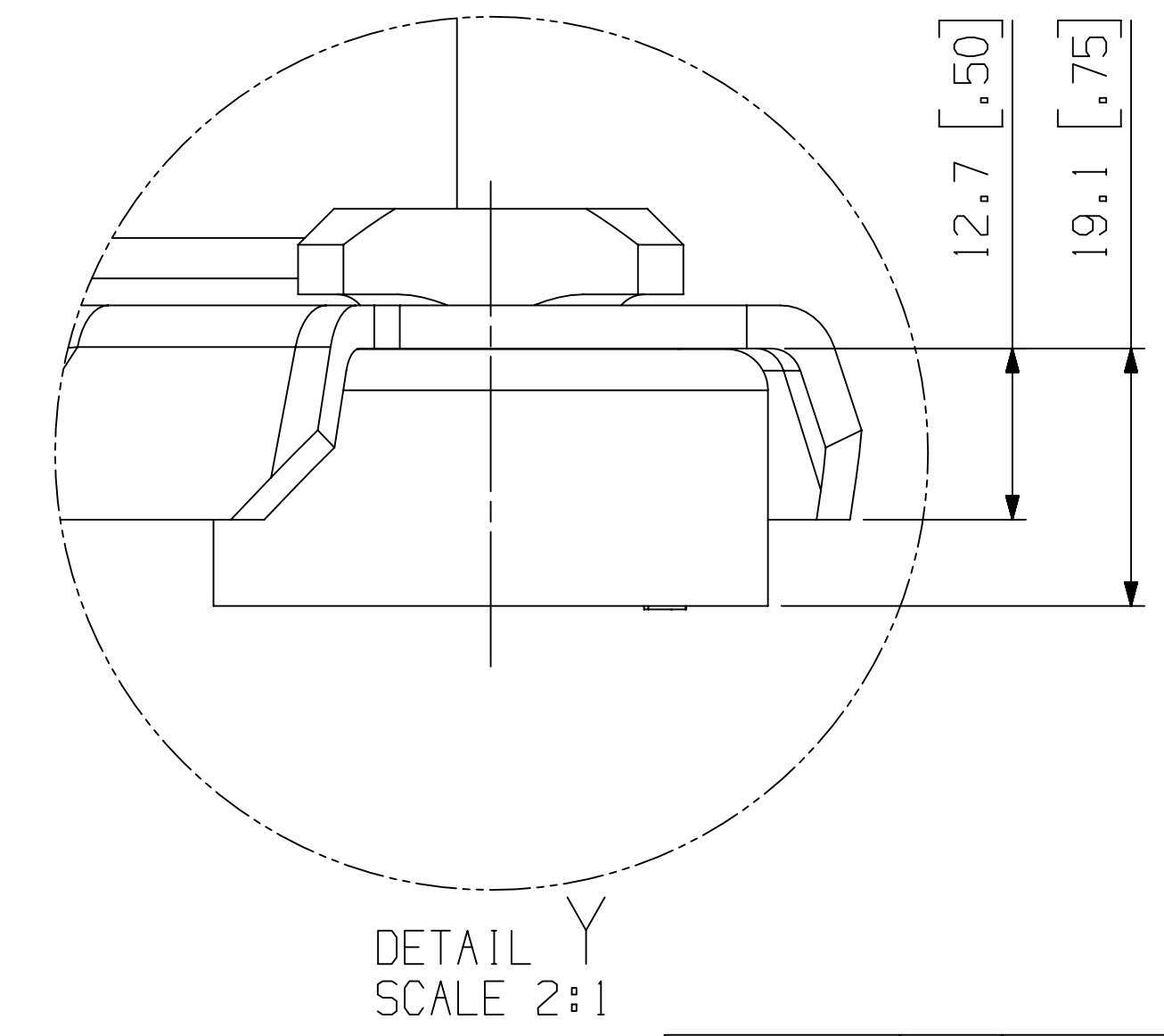
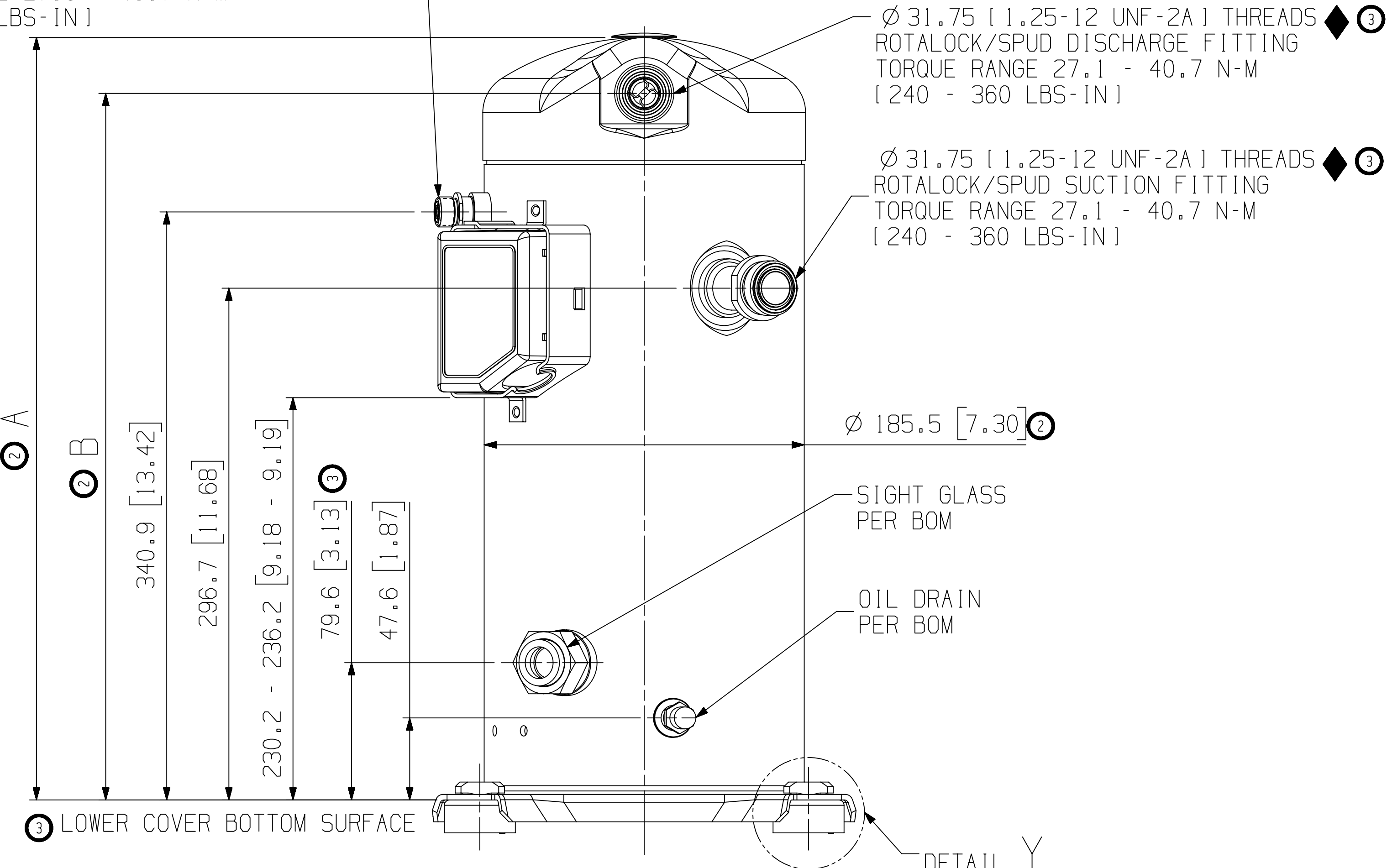
© COPYRIGHT EMERSON - CONFIDENTIAL



TERMINAL BOX LAYOUT OPTIONS
TERMINAL BOX COVER NOT SHOWN
VIEW W - W
SCALE 5:4

MOTOR TYPE	Ø K PIN CIRCLE
TF5	13.46 [0.530]
TFD TFE TF7 TFP	17.45 [0.687]

Ø 17.46 [11/16-16 UN-2A] 8.47 MIN.
THREADS ROTALOCK LIQUID INJECTION FITTING
TORQUE RANGE 27.1 - 40.7 N-M
[240 - 360 LBS-IN]



DETAIL Y
SCALE 2:1

ENG NOTICE NO.	REV. NO.	REVISIONS	DATE	BY	CHKD
ECN321503	3	UPDATED MULTIPLE DIMENSIONS	08-30-22	SRP	AMN
ECN301663	2	REDRAWN & UPDATE DIMENSIONS	03-28-17	AZ	LG
ECN003585	0	RELEASED	03-05-12	CX	DC

CONFIDENTIALITY NOTICE

THIS DRAWING AND INFORMATION CONTAINED HEREIN ARE THE EXCLUSIVE PROPERTY OF EMERSON CLIMATE TECHNOLOGIES, INC AND/OR ITS AFFILIATES (COLLECTIVELY "EMERSON") AND SHALL BE RETURNED UPON DEMAND AND SHALL NOT BE REPRODUCED IN WHOLE OR IN PART, DISCLOSED TO ANYONE ELSE OR USED, WITHOUT THE WRITTEN CONSENT OF EMERSON.

MATERIAL SPECIFICATION	DRAWN BY	SUPERSEDES DWG NO / REV NO
N/A	AZ	497-3599-00 / 001

TITLE	DRAWING NUMBER	SHEET 1 OF 3 DWG
REF DWG-WELD COMP ASSM	497-3599-00	4

EMERSON
Copeland

INTERPRET PER ASME Y14.5M-1994 AND EMERSON DESIGN STANDARDS DS2002

DO NOT SCALE DRAWING

CRITICAL PRODUCT CHARACTERISTICS

UNLESS OTHERWISE SPECIFIED DIMENSIONS ARE MILLIMETER OR (INCH)

TOLERANCES:
1-PLACE ±
2-PLACE ±
ANGULAR ±

© COPYRIGHT EMERSON - CONFIDENTIAL

8

7

6

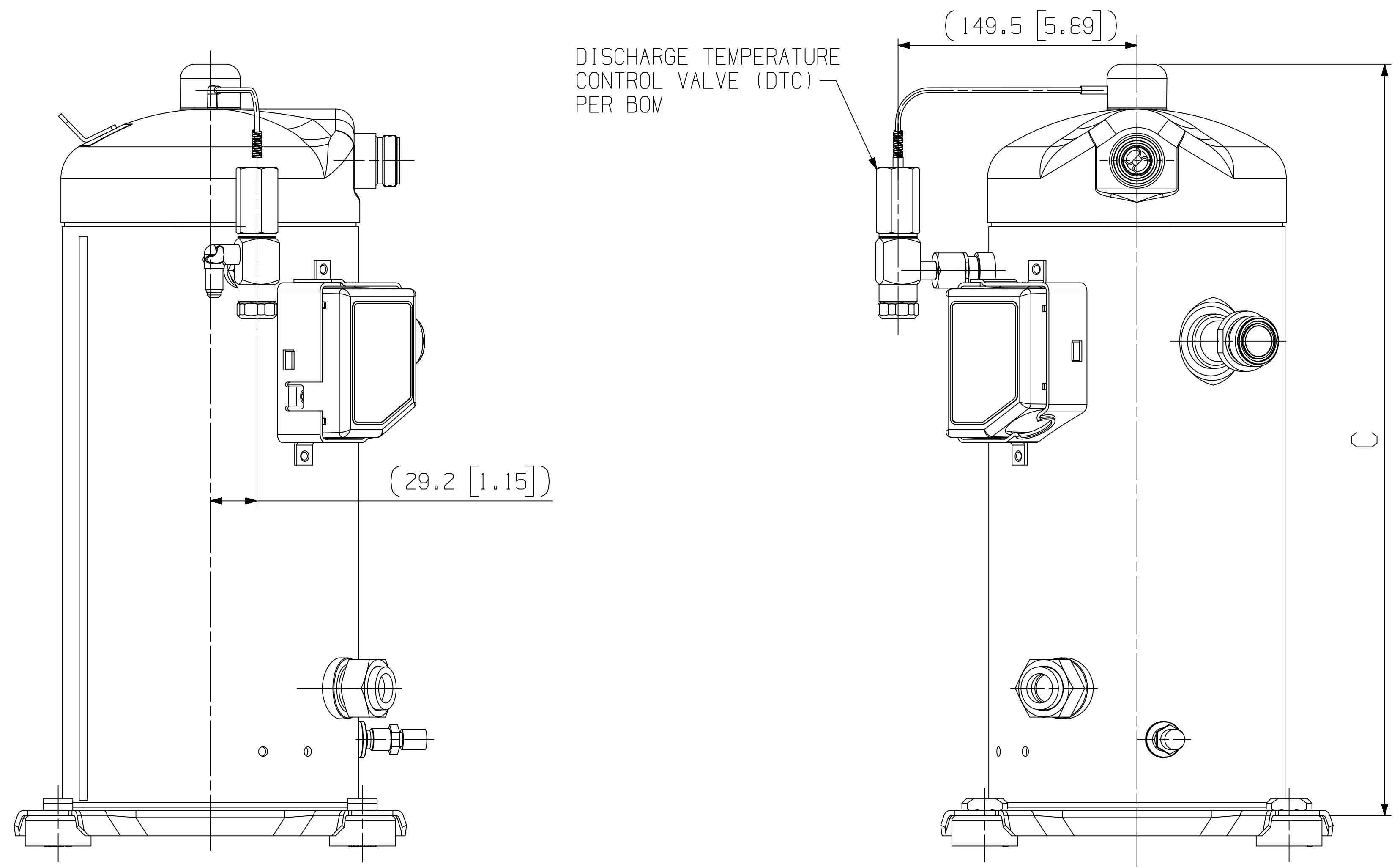
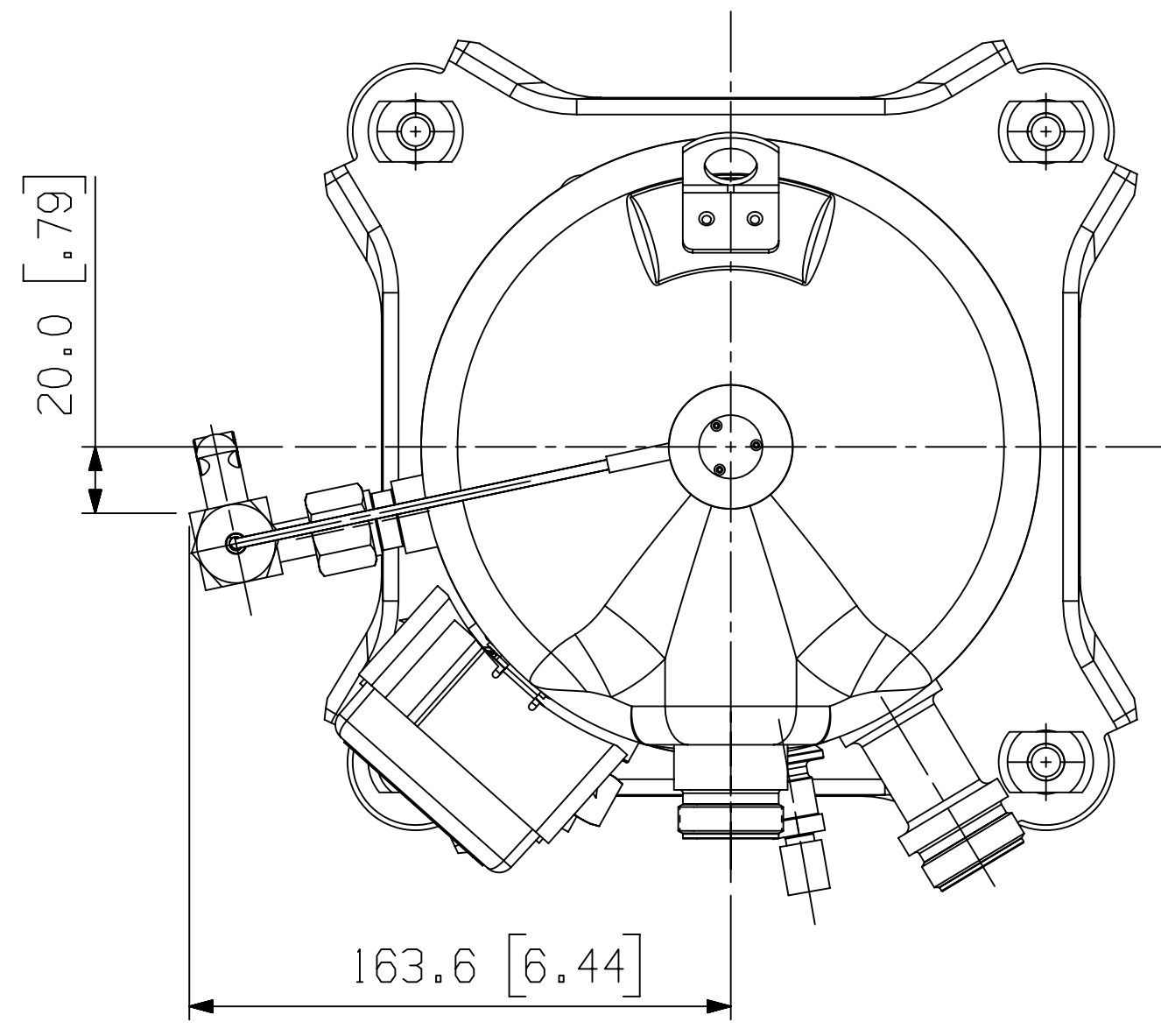
5

4

3

2

1



ECN321503	3	SHEET ADDED	08-30-22	SRP	AMN
ECN003585	0	RELEASED	03-05-12	CX	DC
ENG NOTICE NO.	REV. NO.	REVISIONS	DATE	BY	CHKD
CONFIDENTIALITY NOTICE					
THIS DRAWING AND INFORMATION CONTAINED HEREIN ARE THE EXCLUSIVE PROPERTY OF EMERSON CLIMATE TECHNOLOGIES, INC AND/OR ITS AFFILIATES (COLLECTIVELY "EMERSON") AND SHALL BE RETURNED UPON DEMAND AND SHALL NOT BE REPRODUCED IN WHOLE OR IN PART, DISCLOSED TO ANYONE ELSE OR USED, WITHOUT THE WRITTEN CONSENT OF EMERSON.					
MATERIAL SPECIFICATION		DRAWN BY	SUPERSEDES DWG NO / REV NO		
N/A		AZ	497-3599-00 / 001		
		DATE	SCALE	DATE FORMAT:	
		03-28-17	1:2	MM-DD-YY	
TITLE			DRAWING NUMBER	SHEET 3 OF 3 DWG	
REF DWG-WELD COMP ASSM			497-3599-00	4	
			SIZE		

EMERSON

Copeland

INTERPRET PER ASME Y14.5M-1994 AND EMERSON DESIGN STANDARDS DS2002

DO NOT SCALE DRAWING

CRITICAL PRODUCT CHARACTERISTICS

UNLESS OTHERWISE SPECIFIED DIMENSIONS ARE MILLIMETER OR (INCH)

TOLERANCES:

1-PLACE +

2-PLACE ±

ANGULAR ±

1

© COPYRIGHT EMERSON - CONFIDENTIAL

8

7

6

5

4

3

2

UNCONTROLLED - DO NOT MODIFY