

8	7	6	5	4	3	2	1		
PART NUMBER	MODEL NUMBER	A ±3.0	B ±3.0	C	D ±3.0	E ±3.0	F	G	J ±3.0
497-3598-00	ZF25K4E	444.2 [17.49]	409.6 [16.13]	340.9 [13.42]	296.7 [11.68]	233.2 [9.18]	79.6 [3.13]	47.6 [1.87]	469.8 [18.50]
497-3598-01	YF22KAE*	453.1 [17.84]	418.5 [16.48]	340.9 [13.42]	296.7 [11.68]	233.2 [9.18]	79.6 [3.13]	47.6 [1.87]	478.7 [18.85]

SPECIFICATIONS	
ES NO.	DESCRIPTION
ES92-155	CONVERSION-METRIC

④

NOTES:

1 ALL TOLERANCES ± 1.50 [0.060] UNLESS OTHERWISE SPECIFIED.

DUE TO ACCUMULATED ASSEMBLY TOLERANCES THE LISTED COMPONENTS MAY VARY FROM THE MOUNTING HOLES AS SHOWN BELOW:

- ◆ SUCTION FITTING : ± 3.0 [0.12]
- ◆ DISCHARGE FITTING: ± 3.0 [0.12]

2. TUBE ENDS MUST BE PLUGGED.

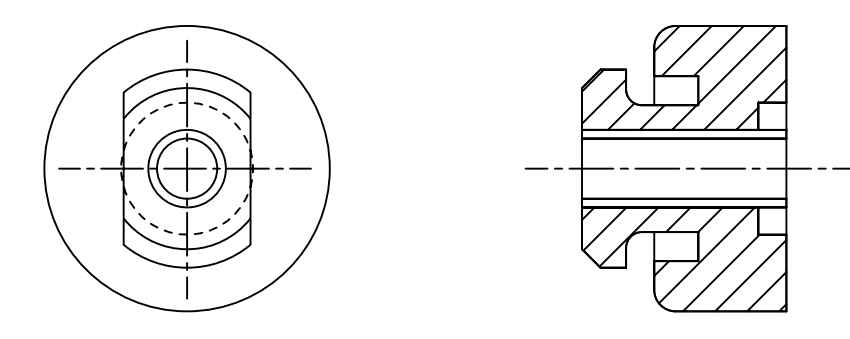
3 TORQUE T-BLOCK SCREW TO 2.4 - 2.6 NM [21 - 23 IN-LBS]

4. FOR MORE INFORMATION SEE PRODUCT CATALOG.

5. FULL HEIGHT OF COMPRESSOR DOES NOT INCLUDE MOUNTING SPACERS.

6. MOUNTING KIT:

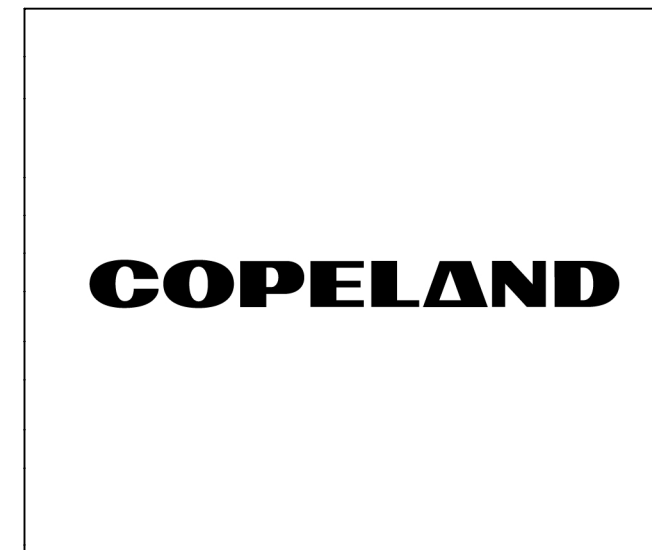
GROMMET DUROMETER	4 FOOT KIT
35-45	527-0116-00



COMPRESSOR WIRING DIAGRAM

USE COPPER CONDUCTORS ONLY. USE MINIMUM 75° C WIRE FOR AMPACITY DETERMINATION. INTERNAL MOTOR PROTECTION - ALLOW TIME FOR RESET. OVERCURRENT PROTECTION DEVICE RATING AND TYPE MUST BE IN ACCORDANCE WITH REGULATORY AGENCY END PRODUCT APPROVALS - SEE SYSTEM NAMEPLATE. CRANKCASE HEATER, WHEN APPLIED, MUST BE CONNECTED ONLY TO ITS RATED VOLTAGE. TO CORRECT IMPROPER ROTATION OF THREE PHASE MODELS, SWITCH ANY TWO SUPPLY LINES. REFER TO THE APPLICABLE SYSTEM WIRING DIAGRAM.

XX 005-1213-00
8-06



INTERPRET PER ASME Y14.5M-1994 AND COPELAND DESIGN STANDARDS DS2002

DO NOT SCALE DRAWING

CRITICAL PRODUCT CHARACTERISTICS

UNLESS OTHERWISE SPECIFIED DIMENSIONS ARE MILLIMETER OR (INCH)

TOLERANCES:
1-PLACE ±
2-PLACE ±
ANGULAR ±

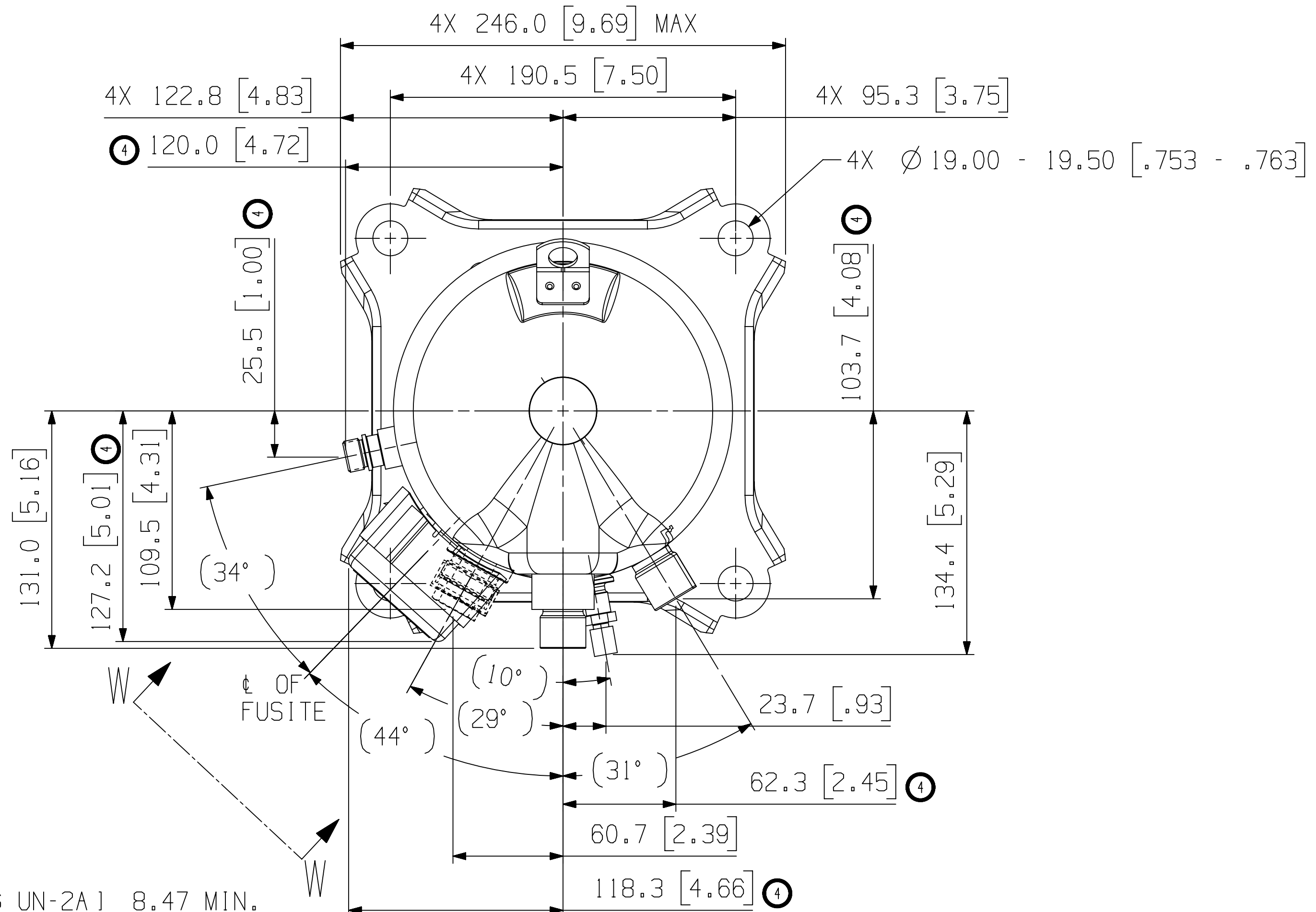
1

ECN319090	4	RELEASED -01	01-11-24	VVP	AMN
ECN325307	3	UPDATED TITLE BLOCK	09-11-23		
ECN321503	2	REDRAWN WITH CHANGES	08-25-22	SRP	AMN
ECN003585	0	RELEASED	03-05-12	CX	DC
ENG NOTICE NO.	REV. NO.	REVISIONS	DATE	BY	CHKD

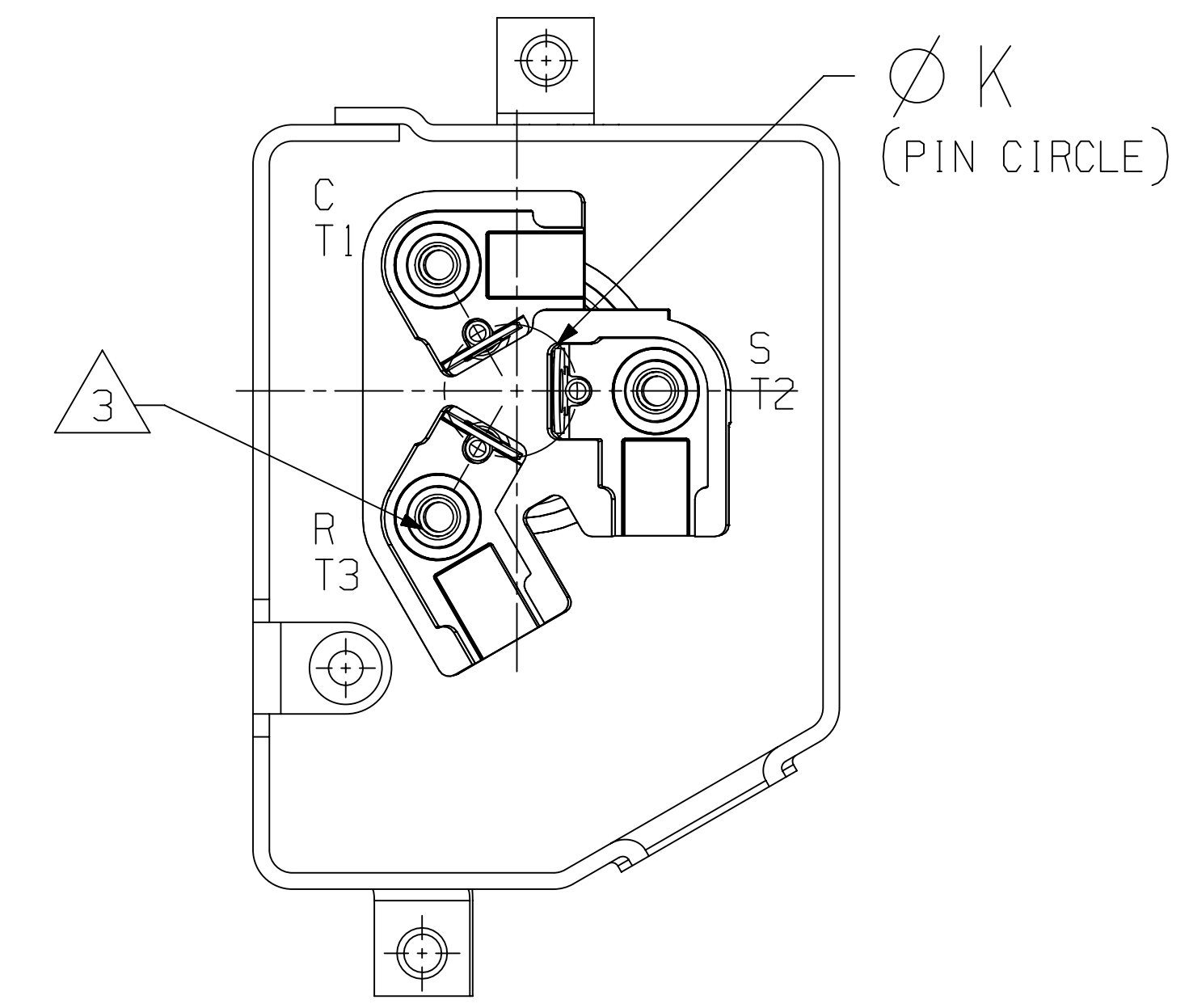
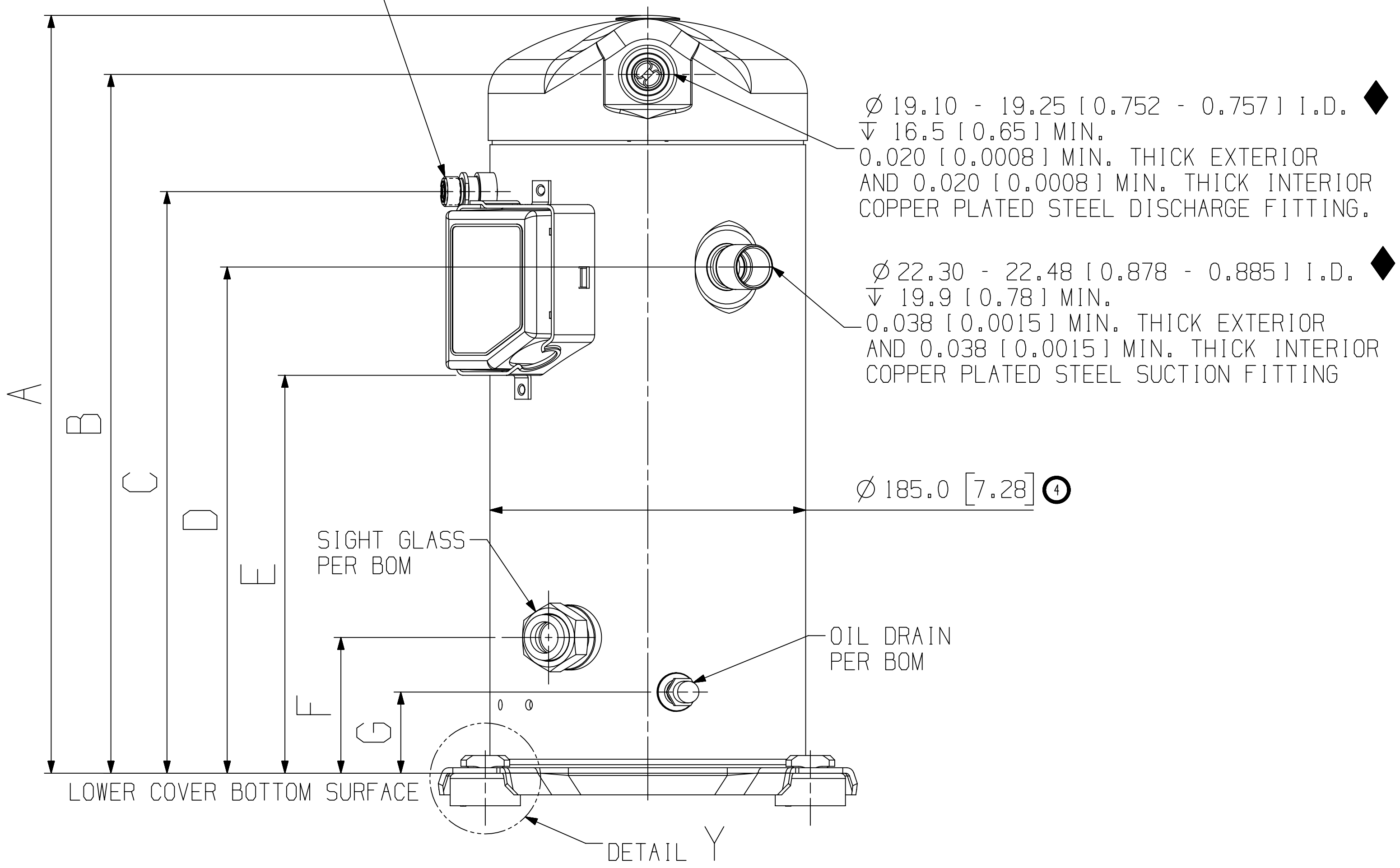
CONFIDENTIALITY NOTICE

THIS DRAWING AND INFORMATION CONTAINED HEREIN ARE THE EXCLUSIVE PROPERTY OF COPELAND LP AND/OR ITS AFFILIATES (COLLECTIVELY "COPELAND") AND SHALL BE RETURNED UPON DEMAND AND SHALL NOT BE REPRODUCED IN WHOLE OR IN PART, DISCLOSED TO ANYONE ELSE OR USED, WITHOUT THE WRITTEN CONSENT OF COPELAND.

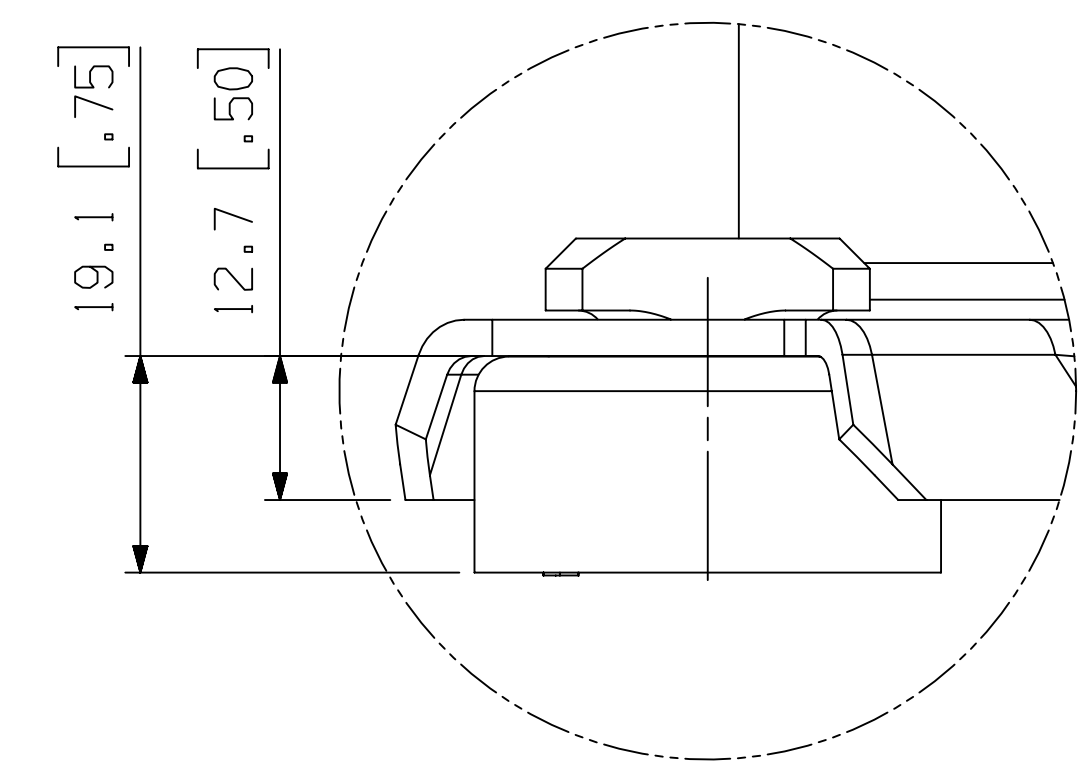
MATERIAL SPECIFICATION	DRAWN BY	SUPERSEDES DWG NO / REV NO
NA	VVP	497-3598-00 / 003
	DATE	SCALE
	01-11-24	1:1
TITLE	DRAWING NUMBER	SHEET 1 OF 3 DWG
REF DWG-WELD COMP ASSM	497-3598-00	4
		SIZE



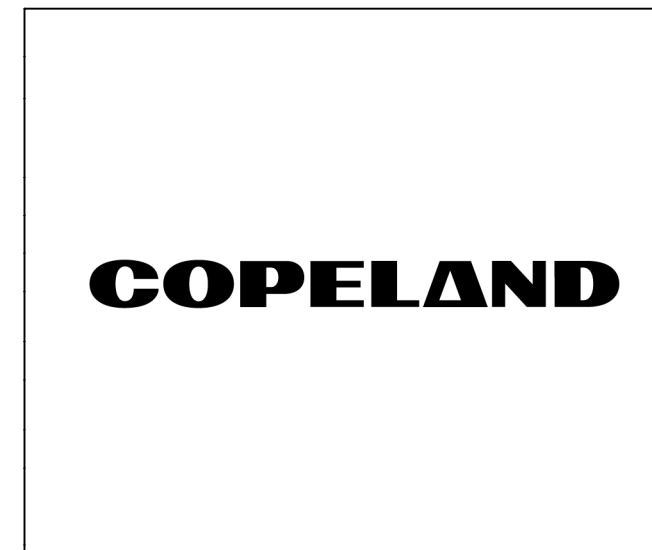
Ø 17.46 [11/16-16 UN-2A] 8.47 MIN.
 THREADS ROTALOCK LIQUID INJECTION
 FITTING TORQUE RANGE
 27.1 - 40.7 N-M [240 - 360 LBS-IN]



TERMINAL BOX LAYOUT OPTIONS
 TERMINAL BOX COVER NOT SHOWN
 VIEW W-W
 SCALE 5:4



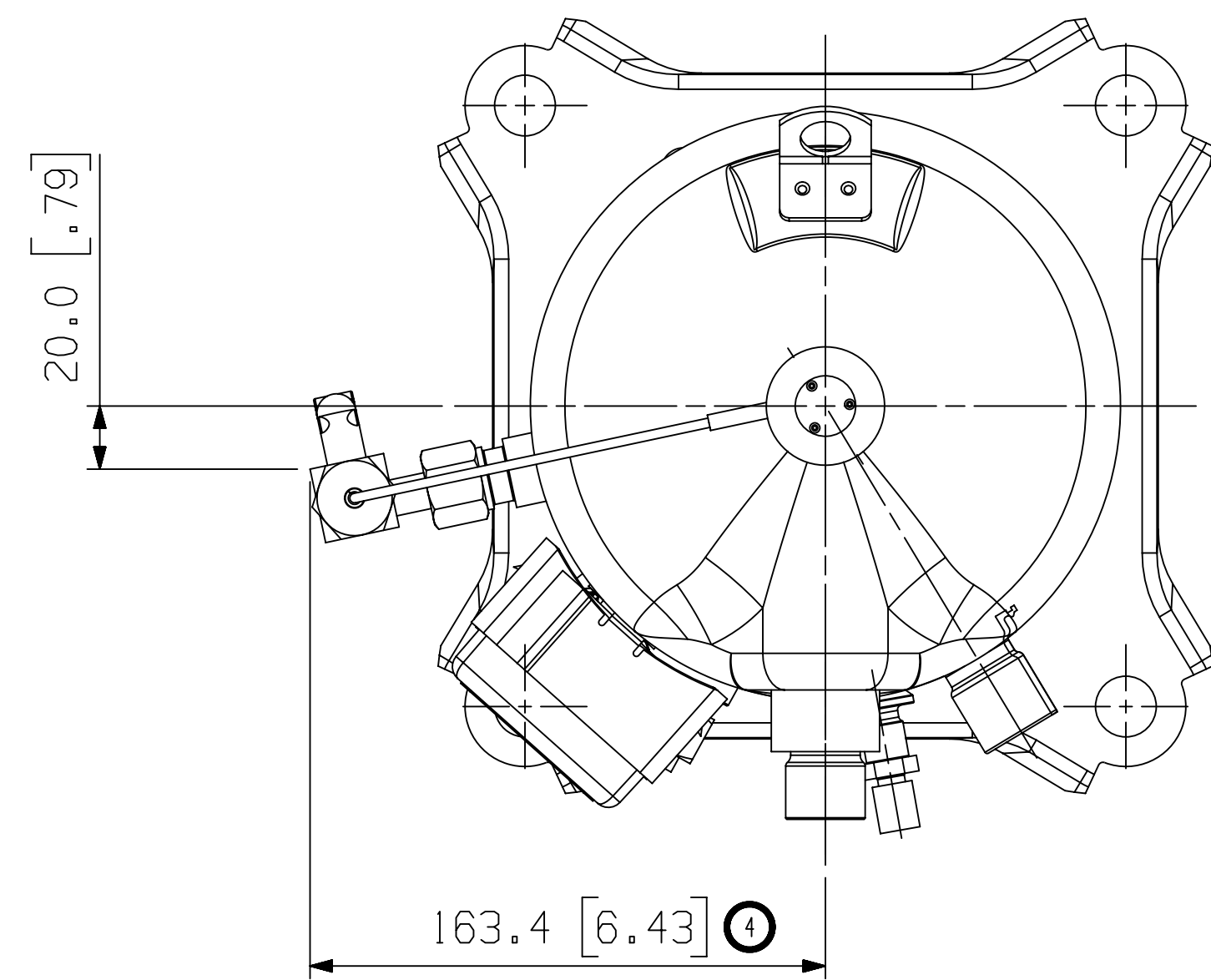
MOTOR TYPE	Ø K PIN CIRCLE
PFJ PFV TF5	13.46 [0.530]
TFD TFE TF7	17.45 [0.687]



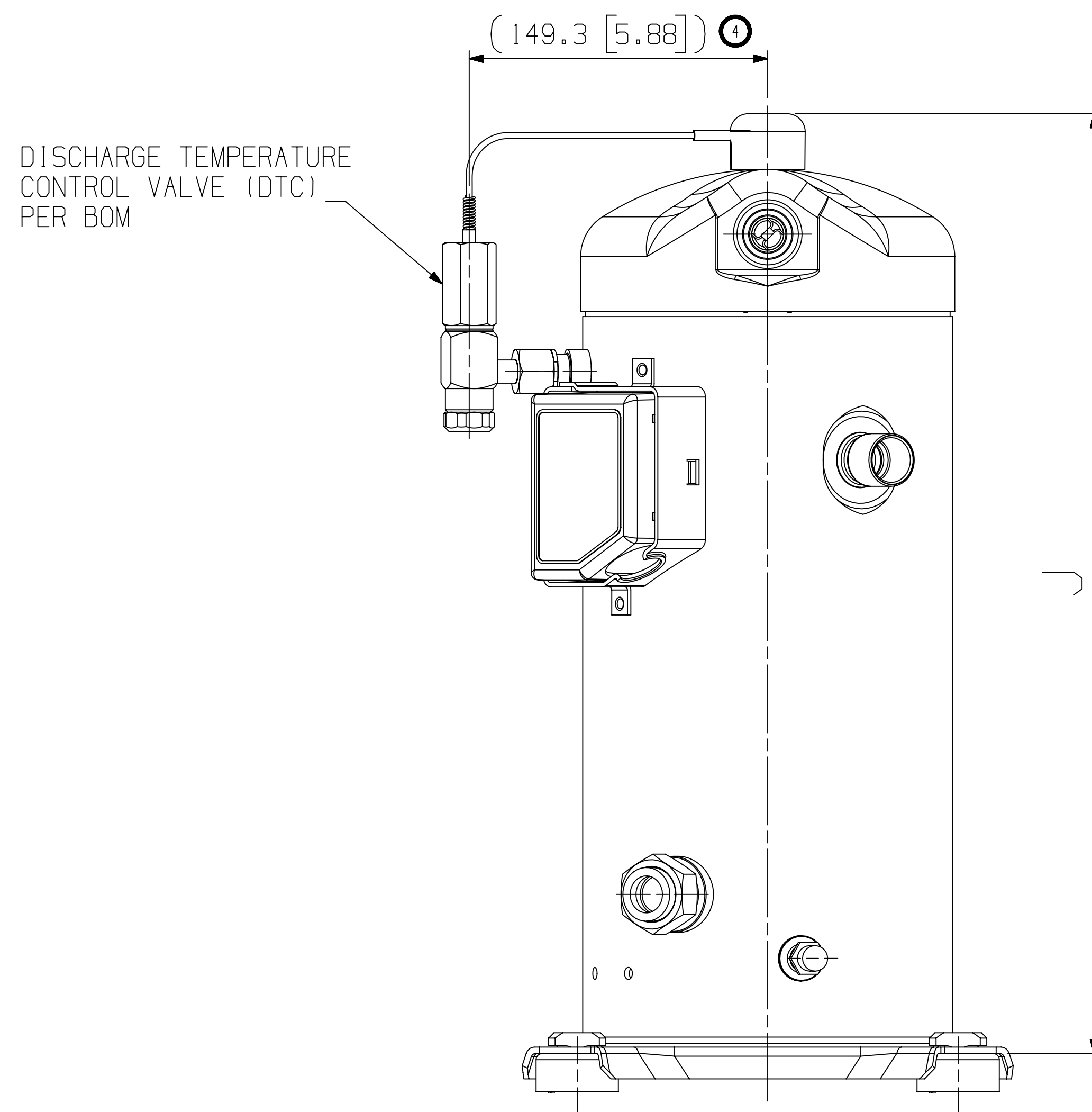
INTERPRET PER ASME
 Y14.5M-1994 AND
 COPELAND DESIGN
 STANDARDS DS2002
 DO NOT SCALE DRAWING
 CRITICAL PRODUCT
 CHARACTERISTICS
 UNLESS OTHERWISE SPECIFIED
 DIMENSIONS ARE MILLIMETER OR (INCH)
 TOLERANCES:
 1-PLACE +
 2-PLACE +
 ANGULAR ±
 1

ECN319090	4	RELEASED -01	01-11-24	VVP	AMN
ECN325307	3	UPDATED TITLE BLOCK	09-11-23		
ECN321503	2	REDRAWN WITH CHANGES	08-25-22	SRP	AMN
ECN003585	0	RELEASED	03-05-12	CX	DC
ENG NOTICE NO.	REV. NO.	REVISIONS	DATE	BY	CHKD
CONFIDENTIALITY NOTICE					
THIS DRAWING AND INFORMATION CONTAINED HEREIN ARE THE EXCLUSIVE PROPERTY OF COPELAND LP AND/OR ITS AFFILIATES (COLLECTIVELY "COPELAND") AND SHALL BE RETURNED UPON DEMAND AND SHALL NOT BE REPRODUCED IN WHOLE OR IN PART, DISCLOSED TO ANYONE ELSE OR USED, WITHOUT THE WRITTEN CONSENT OF COPELAND.					
MATERIAL SPECIFICATION		DRAWN BY	SUPERSEDES DWG NO / REV NO		
NA		VVP	497-3598-00 / 003		
		DATE	SCALE	DATE FORMAT:	
		01-11-24	1:2	MM-DD-YY	
TITLE			DRAWING NUMBER	SHEET 2 OF 3 DWG	
REF DWG-WELD COMP ASSM			497-3598-00	4	
			SIZE		

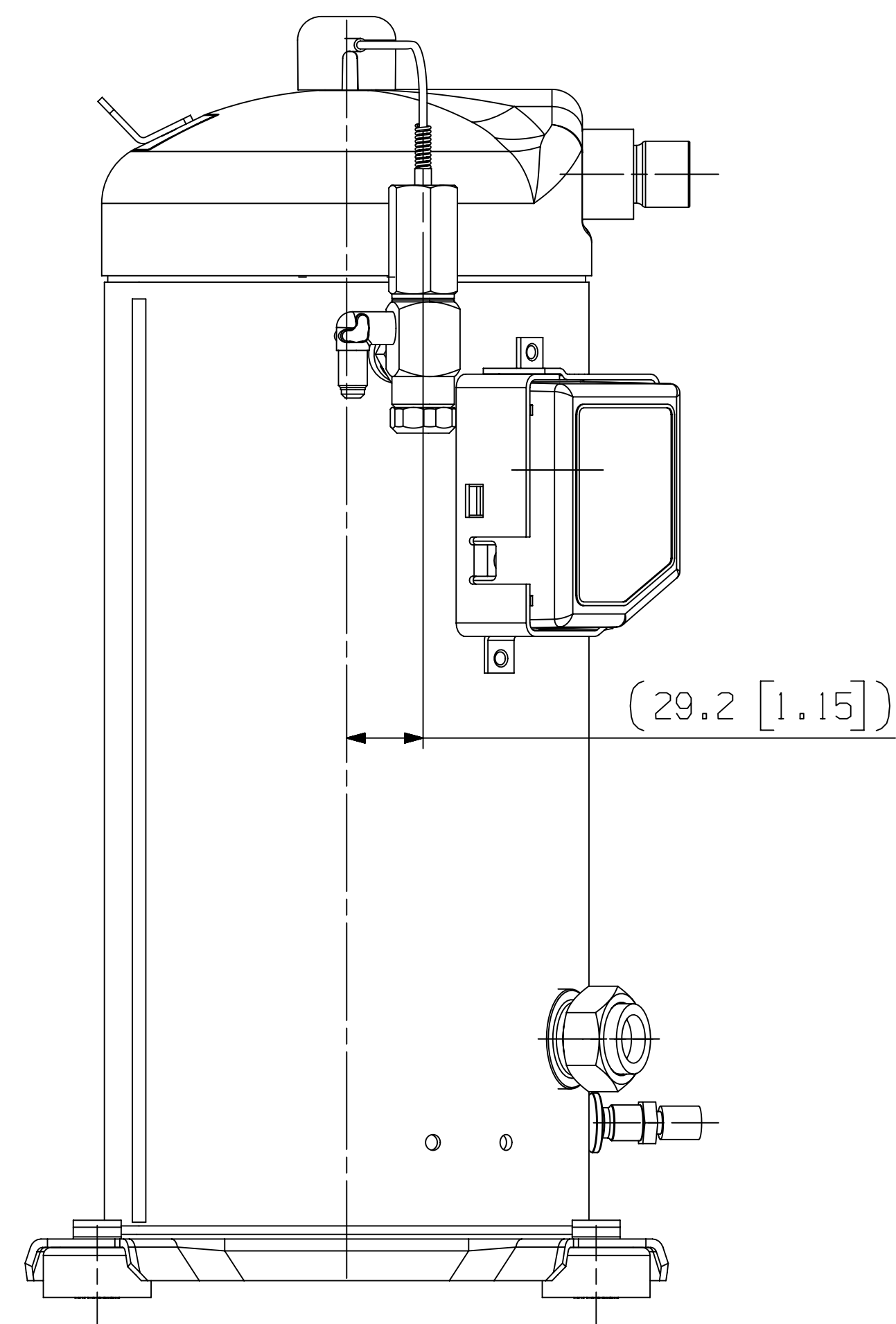
D



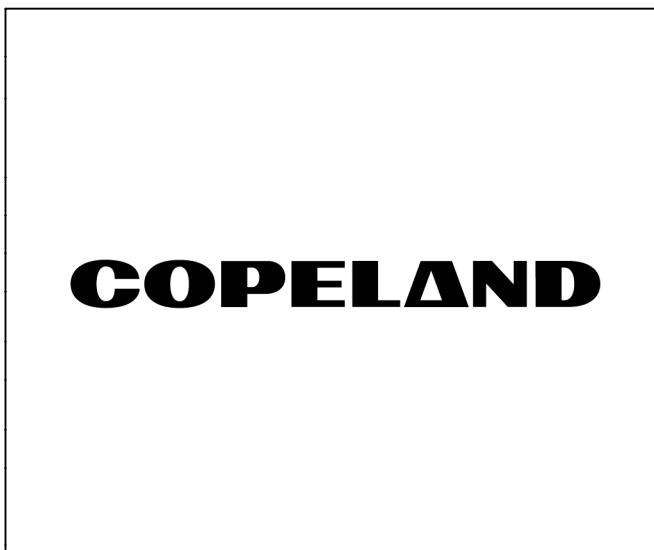
C



B



A



INTERPRET PER ASME Y14.5M-1994 AND COPELAND DESIGN STANDARDS DS2002
 DO NOT SCALE DRAWING
 CRITICAL PRODUCT CHARACTERISTICS
 UNLESS OTHERWISE SPECIFIED DIMENSIONS ARE MILLIMETER OR (INCH)
 TOLERANCES:
 1-PLACE +
 2-PLACE ±
 ANGULAR ±
 1

ECN319090	4	RELEASED -01	01-11-24	VVP	AMN
ECN325307	3	UPDATED TITLE BLOCK	09-11-23		
ECN321503	2	REDRAWN WITH CHANGES	08-25-22	SRP	AMN
ECN003585	0	RELEASED	03-05-12	CX	DC
ENG NOTICE NO.	REV.NO.	REVISIONS	DATE	BY	CHKD

CONFIDENTIALITY NOTICE					
THIS DRAWING AND INFORMATION CONTAINED HEREIN ARE THE EXCLUSIVE PROPERTY OF COPELAND LP AND/OR ITS AFFILIATES (COLLECTIVELY "COPELAND") AND SHALL BE RETURNED UPON DEMAND AND SHALL NOT BE REPRODUCED IN WHOLE OR IN PART, DISCLOSED TO ANYONE ELSE OR USED, WITHOUT THE WRITTEN CONSENT OF COPELAND.					
MATERIAL SPECIFICATION	DRAWN BY	SUPERSEDES DWG NO / REV NO			
NA	VVP	497-3598-00 / 003			
	DATE	SCALE	DATE FORMAT:		
	01-11-24	1:2	MM-DD-YY		
TITLE	DRAWING NUMBER	SHEET 3 OF 3 DWG			
REF DWG-WELD COMP ASSM	497-3598-00			4 SIZE	

©COPYRIGHT COPELAND - CONFIDENTIAL