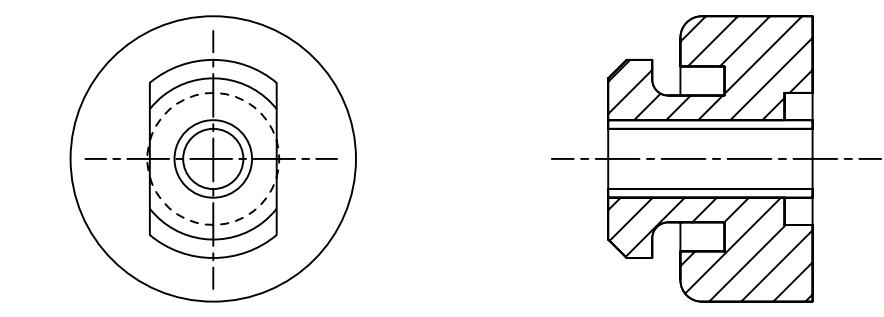


PART NUMBER	MODEL NUMBER	A _{±3.0}	B	C	D _{±3.0}	F	G	H
497-3545-00	ZF06K4*	369.9 [14.56]	343.8 [13.53]	244.5 [9.62]	202.9 [7.99]	280.0 [11.02]	69.6 [2.74]	44.1 [1.74]
497-3545-01	ZF08K4* ZF09K4*	392.5 [15.45]	366.4 [14.42]	264.4 [10.41]	222.8 [8.77]	302.6 [11.91]	75.3 [2.96]	49.8 [1.96]
497-3545-02	ZF11K4*	406.3 [15.99]	380.1 [14.96]	277.1 [10.91]	235.5 [9.27]	316.4 [12.46]	75.3 [2.96]	49.8 [1.96]
497-3545-03	ZS15K4*	369.9 [14.56]	343.8 [13.53]	244.5 [9.62]	202.9 [7.99]	△ ₃	69.6 [2.74]	44.1 [1.74]
497-3545-04	ZS19K4* ZS21K4*	392.5 [15.45]	366.4 [14.42]	264.4 [10.41]	222.8 [8.77]	△ ₃	75.3 [2.96]	49.8 [1.96]
497-3545-05	ZS26K4*	406.3 [15.99]	380.1 [14.96]	277.1 [10.91]	235.5 [9.27]	△ ₃	75.3 [2.96]	49.8 [1.96]
497-3545-06	ZB15KC* ZB19KC*	369.9 [14.56]	343.8 [13.53]	244.5 [9.62]	202.9 [7.99]	△ ₃	69.6 [2.74]	44.1 [1.74]
497-3545-07	ZB21KC*	392.5 [15.45]	366.4 [14.42]	264.4 [10.41]	222.8 [8.77]	△ ₃	75.3 [2.96]	49.8 [1.96]
497-3545-08	ZB26KC*	406.3 [15.99]	380.1 [14.96]	277.1 [10.91]	235.5 [9.27]	△ ₃	75.3 [2.96]	49.8 [1.96]
497-3545-09	ZB29KCE	423.3 [16.66]	397.1 [15.63]	294.1 [11.58]	252.5 [9.94]	△ ₃	75.3 [2.96]	49.8 [1.96]

SPECIFICATIONS	
ES NO.	DESCRIPTION
ES92-155	CONVERSION-METRIC

- NOTES:
- △ ALL TOLERANCES ±1.5 [0.06] UNLESS OTHERWISE SPECIFIED.
 - DUE TO ACCUMULATED ASSEMBLY TOLERANCES THE LISTED COMPONENTS MAY VARY FROM THE MOUNTING HOLES AS SHOWN BELOW:
 - ◆ ALL FITTINGS : ±3.0 [0.12]
 2. TUBE ENDS MUST BE PLUGGED.
 - △ INJECTION FITTING & THERMOSTAT TUBE OMITTED.
 4. FOR MORE INFORMATION SEE PRODUCT CATALOG.
 5. FULL HEIGHT OF COMPRESSOR DOES NOT INCLUDE MOUNTING SPACERS.
 6. MOUNTING KIT:

GROMMET DUROMETER	4 FOOT KIT
35-45	527-0116-00



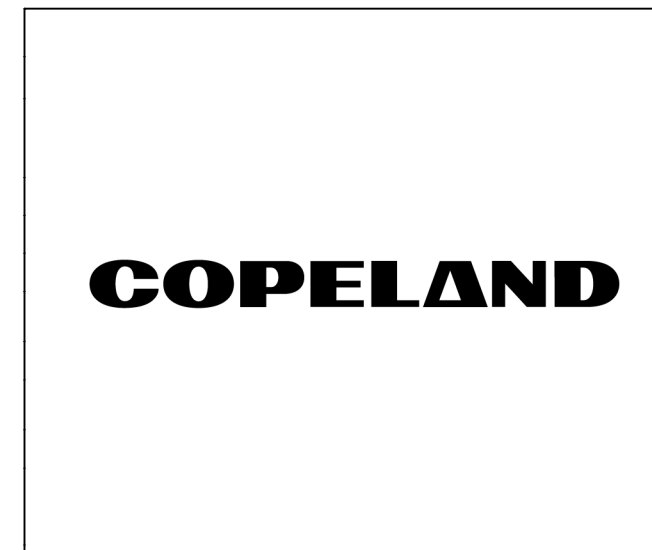
COMPRESSOR WIRING DIAGRAM

USE COPPER CONDUCTORS ONLY. USE MINIMUM 75° C WIRE FOR AMPACITY DETERMINATION. INTERNAL MOTOR PROTECTION - ALLOW TIME FOR RESET. OVERCURRENT PROTECTION DEVICE RATING AND TYPE MUST BE IN ACCORDANCE WITH REGULATORY AGENCY END PRODUCT APPROVALS - SEE SYSTEM NAMEPLATE. CRANKCASE HEATER, WHEN APPLIED, MUST BE CONNECTED ONLY TO ITS RATED VOLTAGE. TO CORRECT IMPROPER ROTATION OF THREE PHASE MODELS, SWITCH ANY TWO SUPPLY LINES. REFER TO THE APPLICABLE SYSTEM WIRING DIAGRAM.

005-1270-00

B-06

ENG NOTICE NO.	REV. NO.	REVISIONS	DATE	BY	CHKD
ECN319089	21	REINSTATED -03 THRU -06 & -09	04-17-24	VVP	VVD
32-1198-023	0	RELEASED	01-11-99	AJA	DAN



INTERPRET PER ASME Y14.5M-1994 AND COPELAND DESIGN STANDARDS DS2002

DO NOT SCALE DRAWING

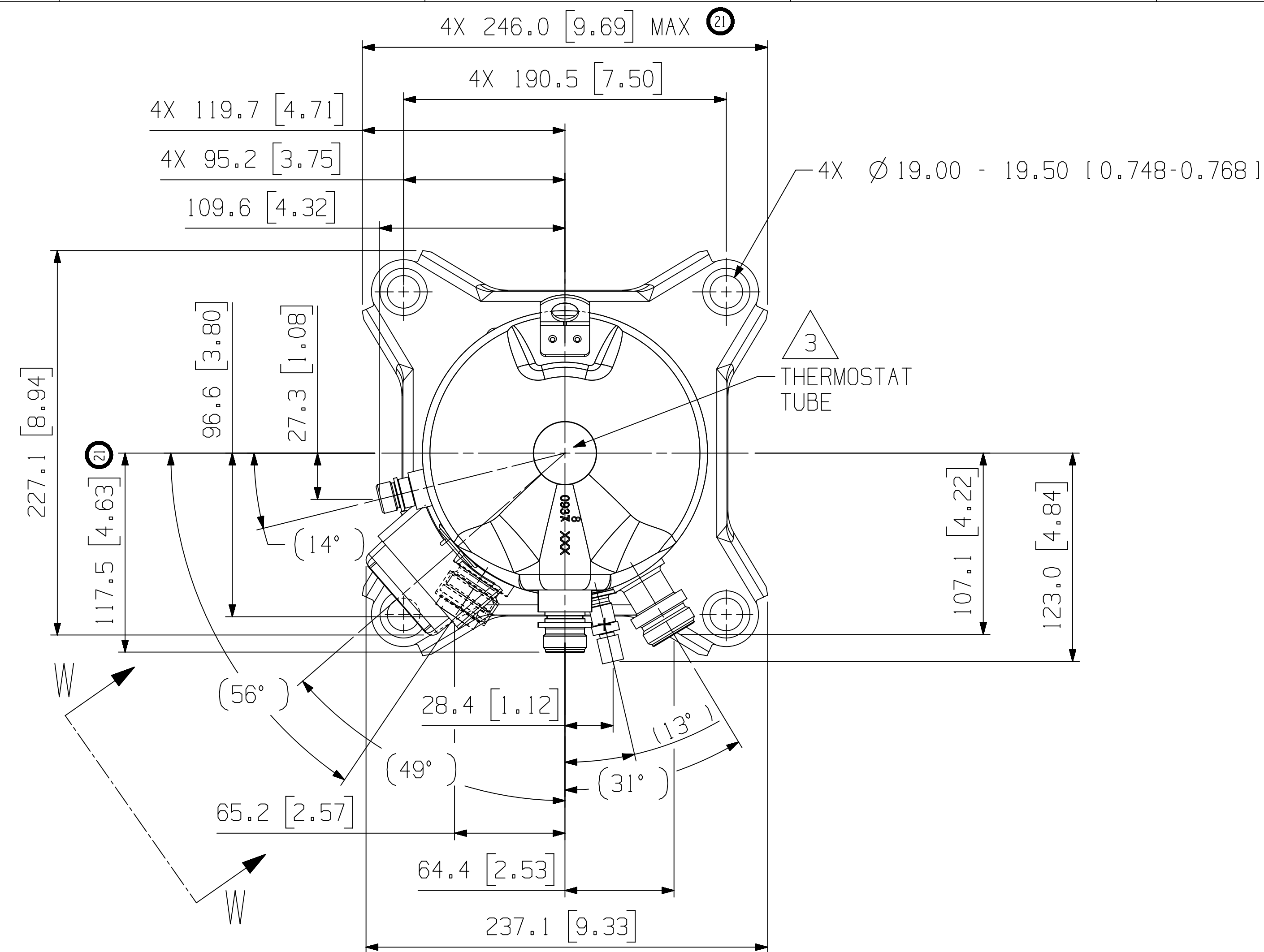
CRITICAL PRODUCT CHARACTERISTICS

UNLESS OTHERWISE SPECIFIED DIMENSIONS ARE MILLIMETER OR (INCH)

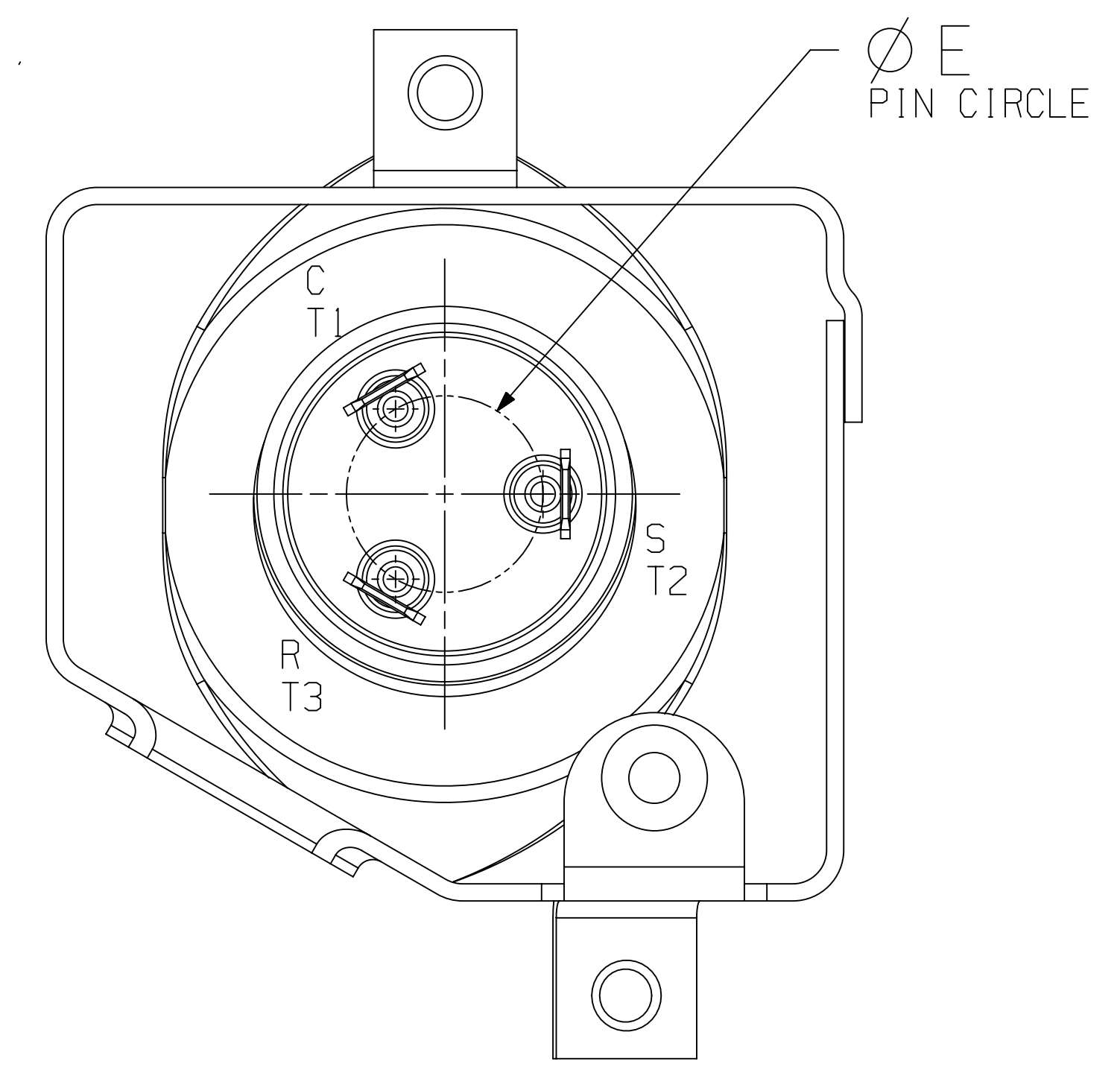
TOLERANCES:
1-PLACE ±
2-PLACE ±
ANGULAR ± N/A

△ 1

CONFIDENTIALITY NOTICE			
10	THIS DRAWING AND INFORMATION CONTAINED HEREIN ARE THE EXCLUSIVE PROPERTY OF COPELAND LP AND/OR ITS AFFILIATES (COLLECTIVELY "COPELAND") AND SHALL BE RETURNED UPON DEMAND AND SHALL NOT BE REPRODUCED IN WHOLE OR IN PART, DISCLOSED TO ANYONE ELSE OR USED, WITHOUT THE WRITTEN CONSENT OF COPELAND.		
MATERIAL SPECIFICATION	DRAWN BY	SUPERSEDES DWG NO / REV NO	DATE
N/A	VVP	497-3545-00 / 020	04-17-24
TITLE	SCALE	DRAWING NUMBER	SHEET 1 OF 3 DWG
REF DWG-WELD COMP ASSM	1:1	497-3545-00	4

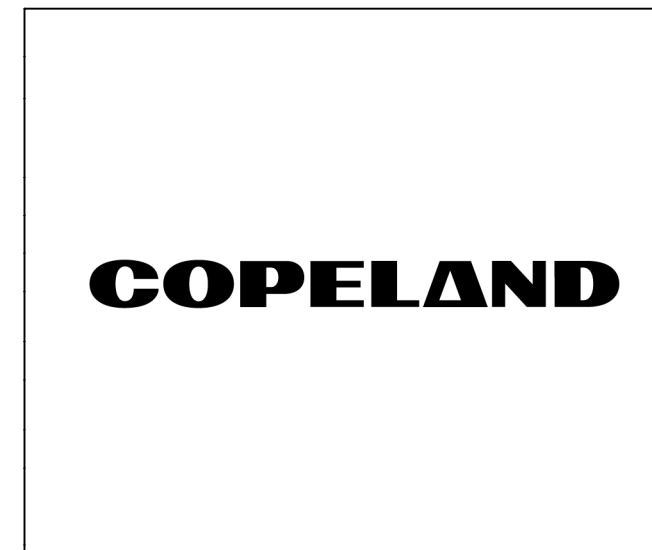
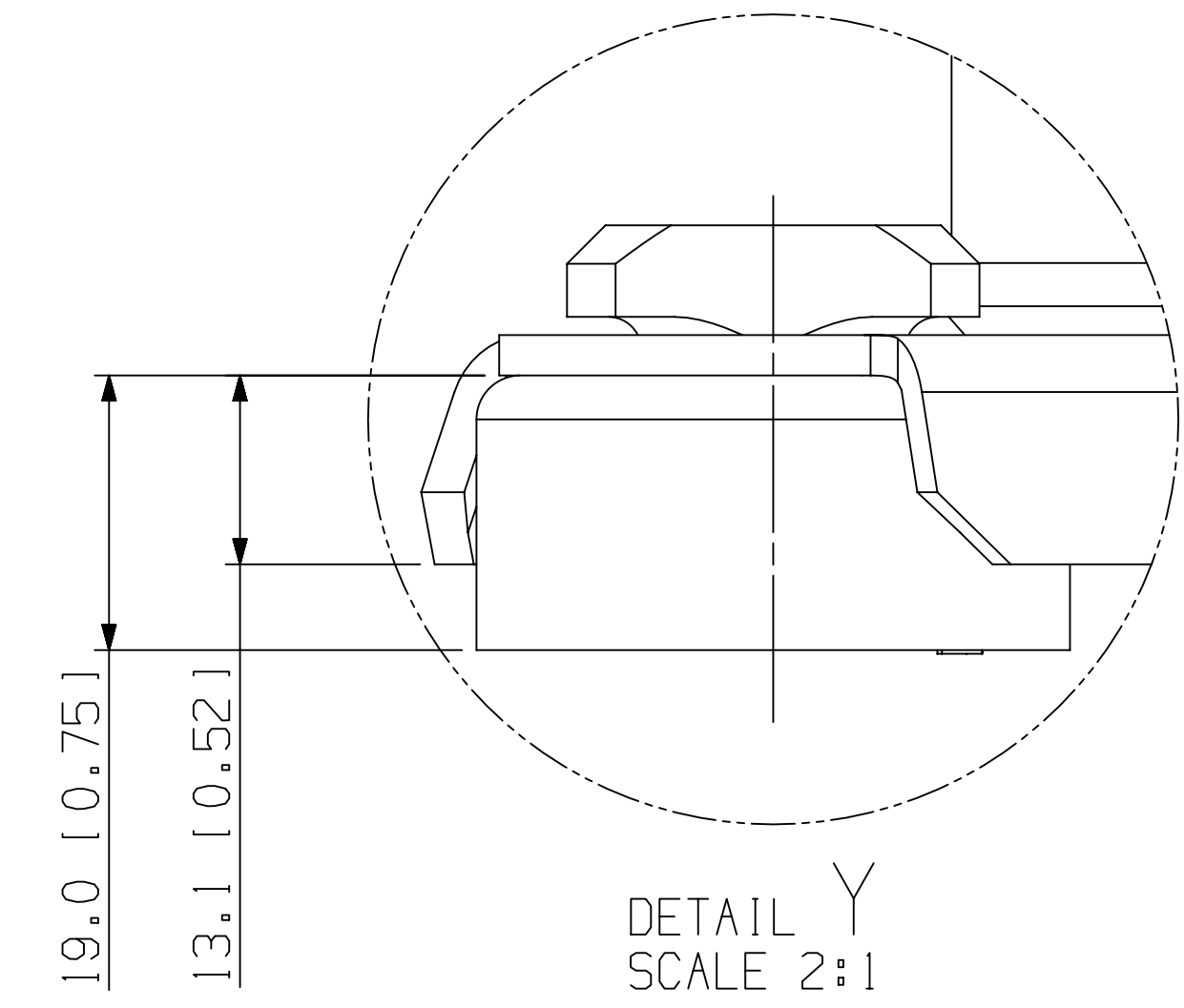
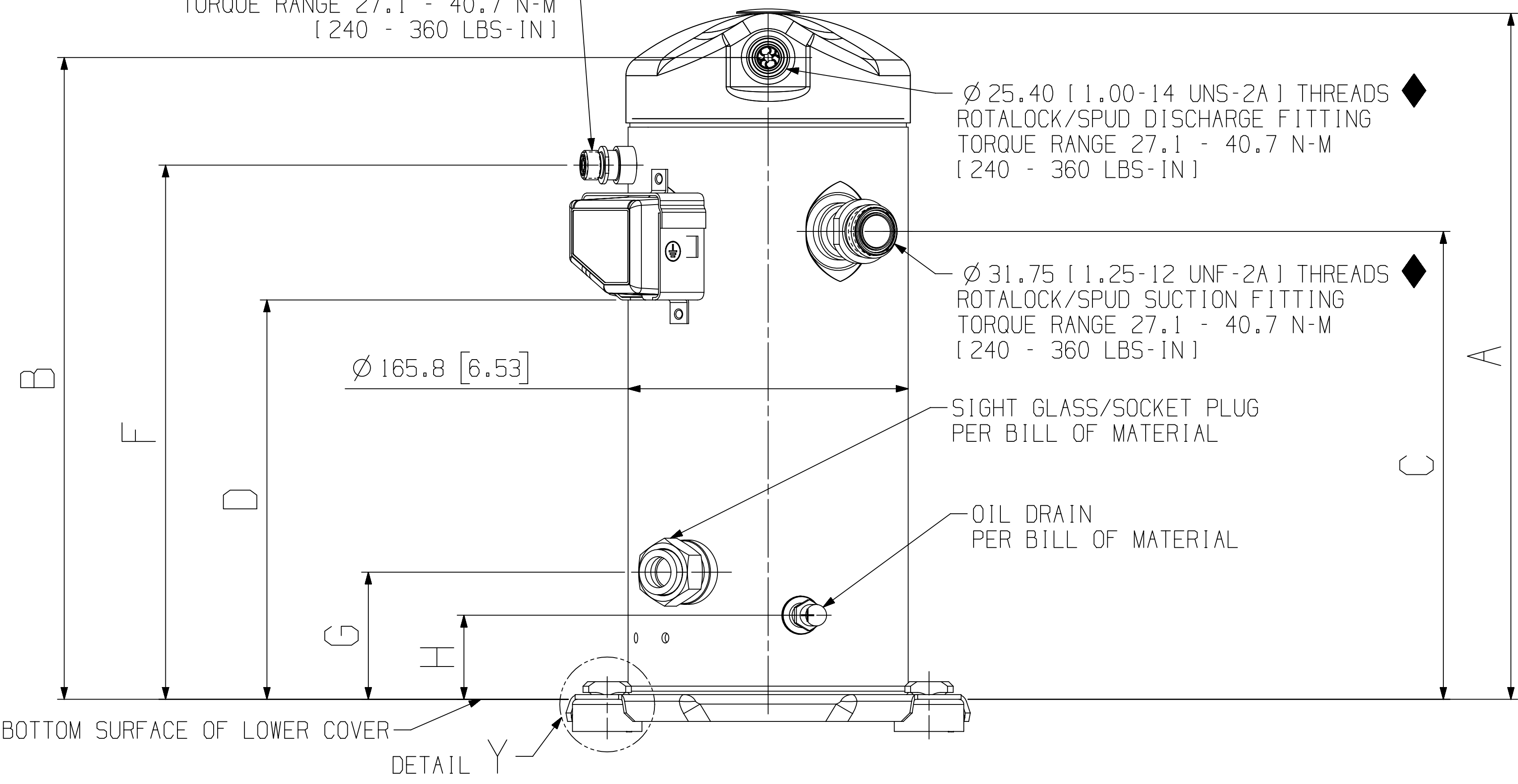


MOTOR TYPE	Ø E PIN CIRCLE
PFJ PFV TF5	13.46 [0.530]
TFD TFE	17.45 [0.687]



VIEW W-W
TERMINAL BOX LAYOUT OPTIONS
TERMINAL BOX COVER NOT SHOWN
SCALE 2:1

3
Ø 17.46 [11/16-16 UN-2A] 8.47 MIN. THREADS
ROTALOCK LIQUID INJECTION FITTING
TORQUE RANGE 27.1 - 40.7 N-M
[240 - 360 LBS-IN]



INTERPRET PER ASME
Y14.5M-1994 AND
COPELAND DESIGN
STANDARDS DS2002

DO NOT SCALE DRAWING

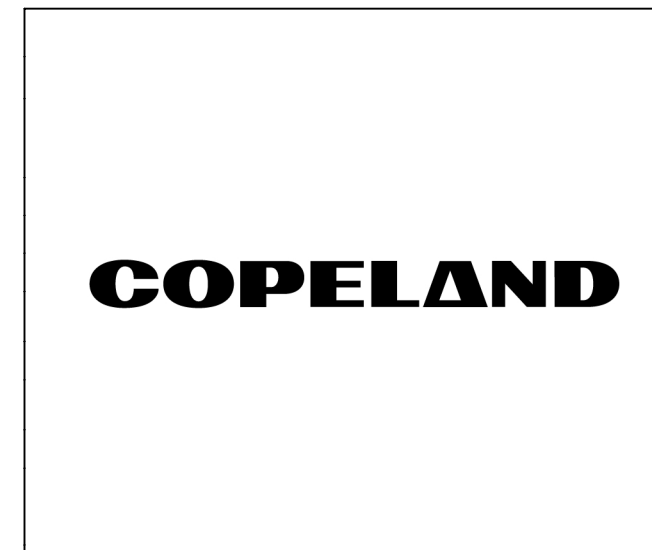
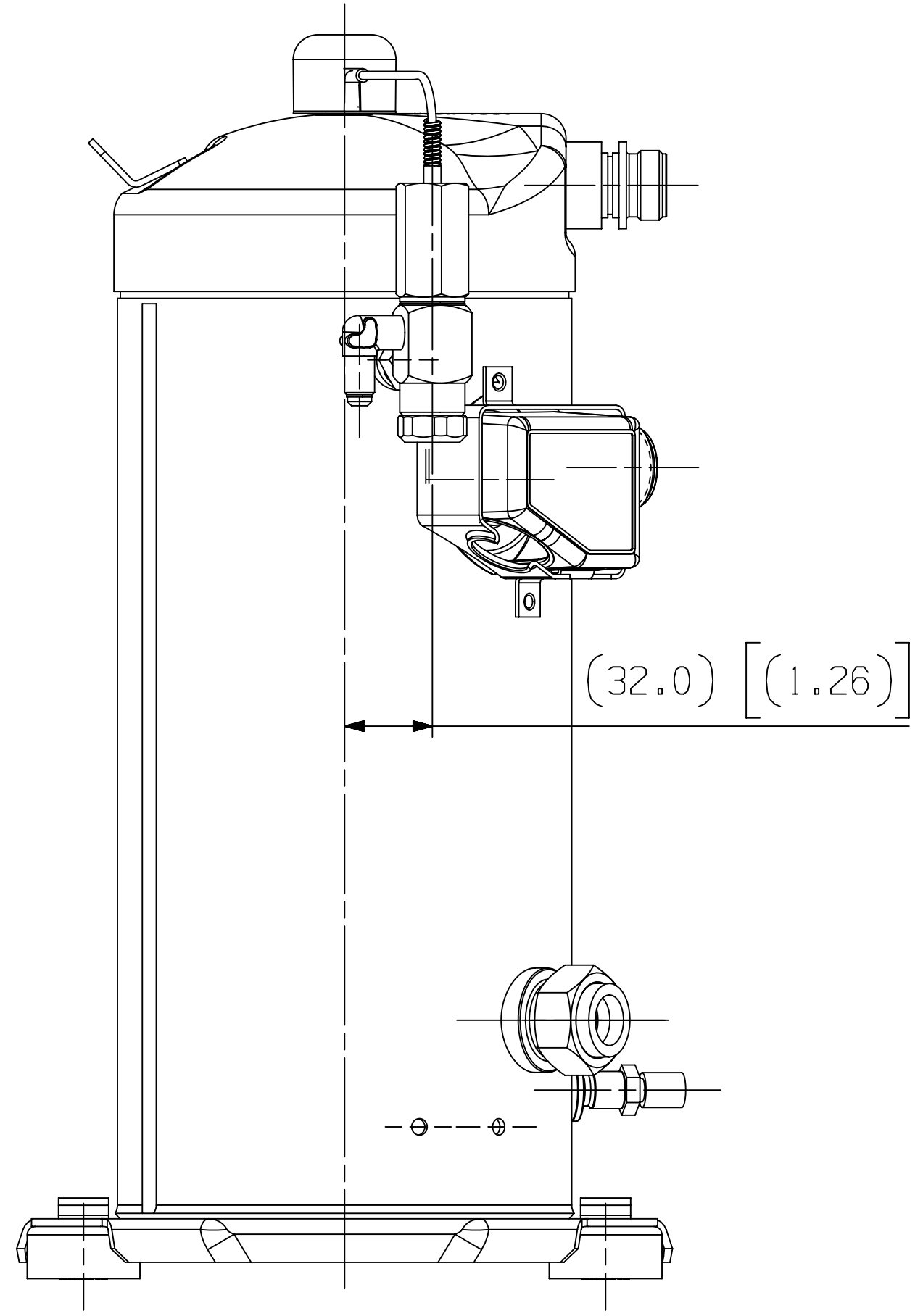
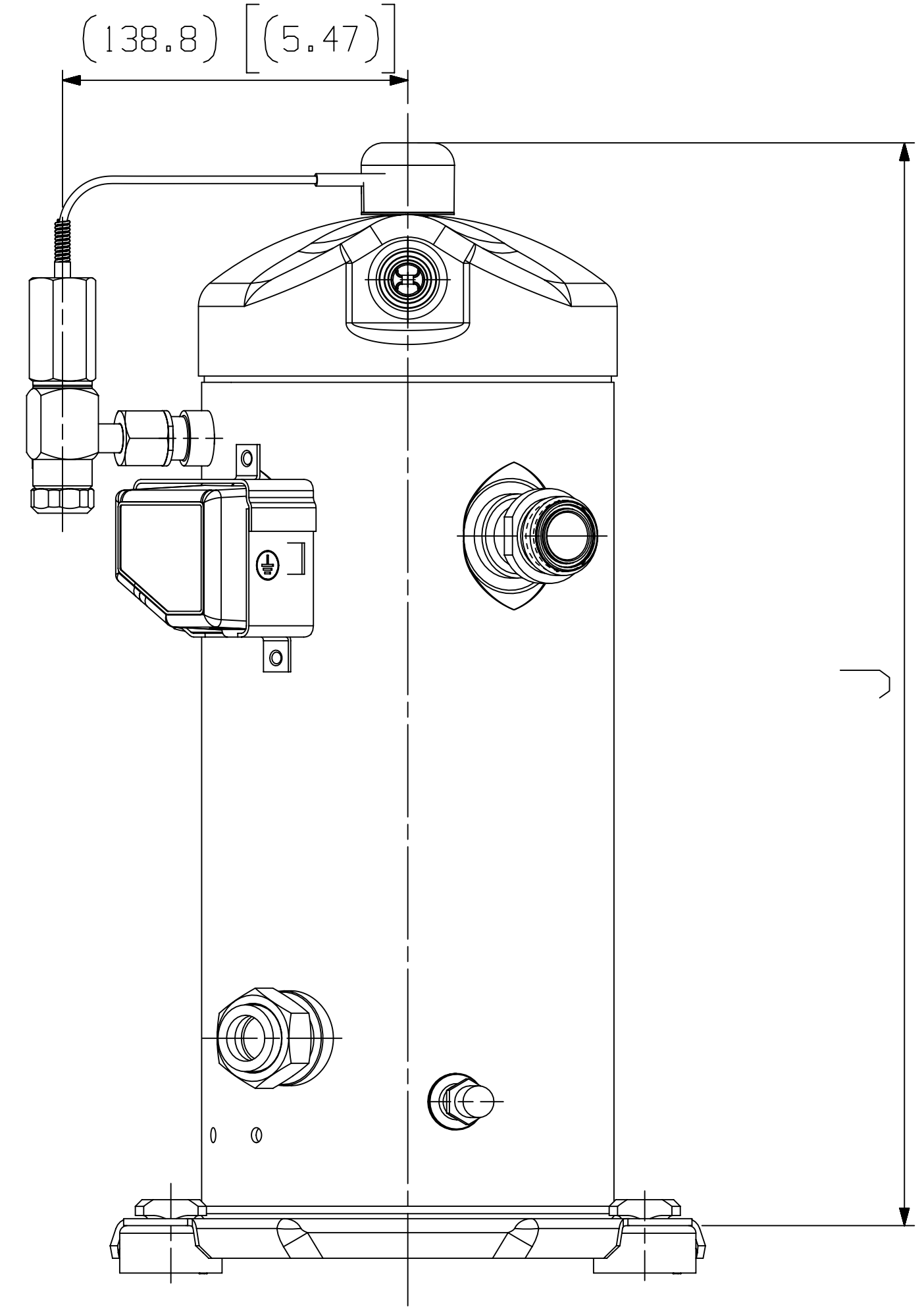
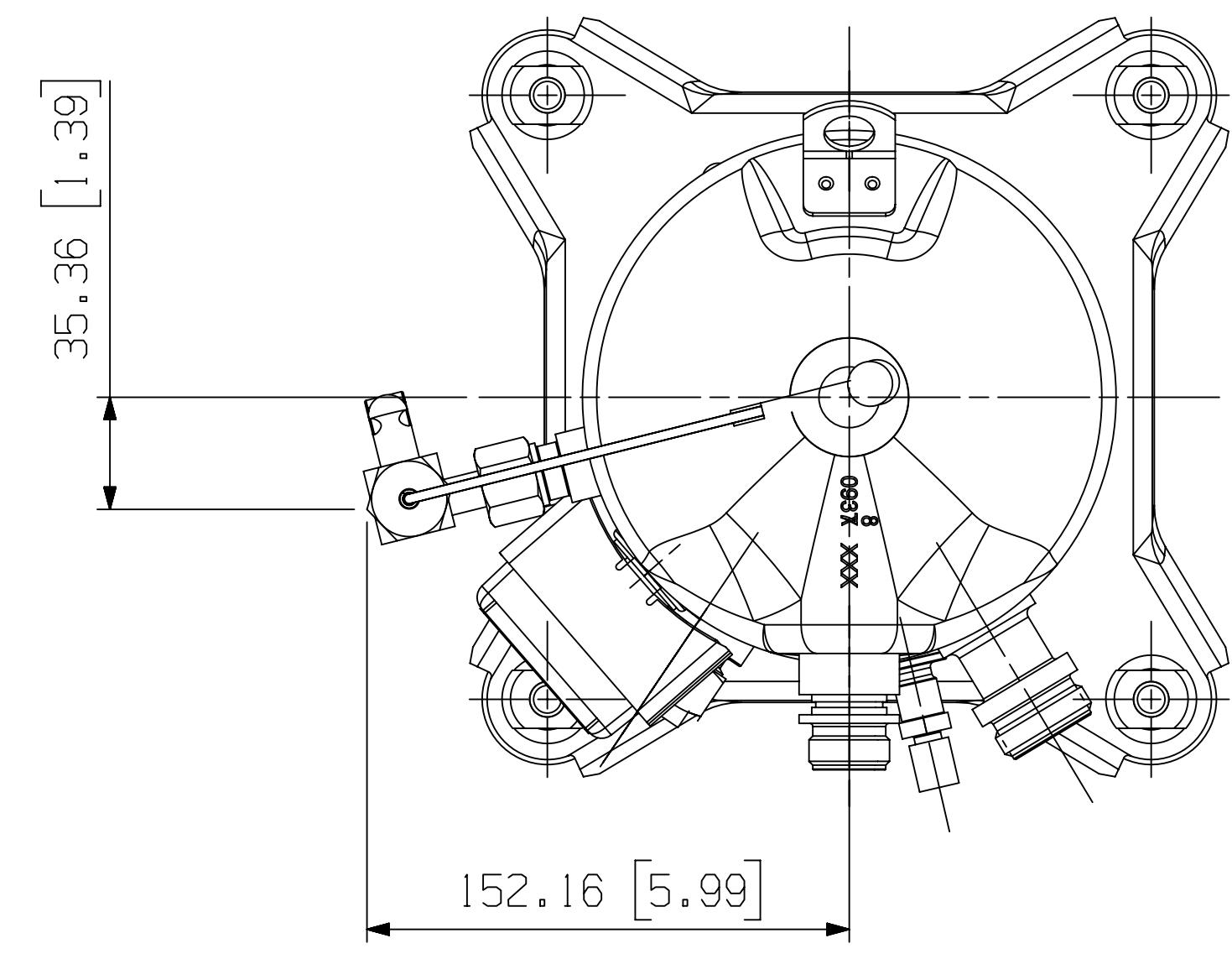
CRITICAL PRODUCT CHARACTERISTICS

UNLESS OTHERWISE SPECIFIED
DIMENSIONS ARE MILLIMETER OR (INCH)

TOLERANCES:
1-PLACE +
2-PLACE ±
ANGULAR ± N/A

ECN319089	21	SEE SHEET 1	04-17-24	VVP	VVD
32-1198-023	0	RELEASED	01-11-99	AJA	DAN
ENG NOTICE NO.	REV. NO.	REVISIONS	DATE	BY	CHKD
10		CONFIDENTIALITY NOTICE THIS DRAWING AND INFORMATION CONTAINED HEREIN ARE THE EXCLUSIVE PROPERTY OF COPELAND LP AND/OR ITS AFFILIATES (COLLECTIVELY "COPELAND") AND SHALL BE RETURNED UPON DEMAND AND SHALL NOT BE REPRODUCED IN WHOLE OR IN PART, DISCLOSED TO ANYONE ELSE OR USED, WITHOUT THE WRITTEN CONSENT OF COPELAND.			
MATERIAL SPECIFICATION		DRAWN BY	SUPERSEDES DWG NO / REV NO		
N/A		VVP	497-3545-00 / 020		
TITLE		DATE	SCALE	DATE FORMAT:	
REF DWG-WELD COMP ASSM		04-17-24	1:2	MM-DD-YY	
DRAWING NUMBER			SHEET 2 OF 3 DWG		
497-3545-00			4		
			SIZE		

PART NUMBER	MODEL NUMBER	J
497-3545-00	ZF06K4E ZF06K4L	398.7 [15.69]
497-3545-01	ZF08K4E ZF09K4E ZF08K4L ZF09K4L	421.4 [16.59]
497-3545-02	ZF11K4E ZF11K4L	435.1 [17.13]



INTERPRET PER ASME
Y14.5M-1994 AND
COPELAND DESIGN
STANDARDS DS2002

DO NOT SCALE DRAWING

CRITICAL PRODUCT CHARACTERISTICS

UNLESS OTHERWISE SPECIFIED
DIMENSIONS ARE MILLIMETER OR (INCH)

TOLERANCES:
1-PLACE :
2-PLACE :
ANGULAR : N/A

ECN319089	21	SEE SHEET 1	04-17-24	VVP	VVD
32-1198-023	0	RELEASED	01-11-99	AJA	DAN
ENG NOTICE NO.	REV.NO.	REVISIONS	DATE	BY	CHKD
10		CONFIDENTIALITY NOTICE THIS DRAWING AND INFORMATION CONTAINED HEREIN ARE THE EXCLUSIVE PROPERTY OF COPELAND LP AND/OR ITS AFFILIATES (COLLECTIVELY "COPELAND") AND SHALL BE RETURNED UPON DEMAND AND SHALL NOT BE REPRODUCED IN WHOLE OR IN PART, DISCLOSED TO ANYONE ELSE OR USED, WITHOUT THE WRITTEN CONSENT OF COPELAND.			
MATERIAL SPECIFICATION		DRAWN BY	SUPERSEDES DWG NO /	REV NO	
N/A		VVP	497-3545-00 /	020	
TITLE		DATE	SCALE	DATE FORMAT:	
REF DWG-WELD COMP ASSM		04-17-24	1:2	MM-DD-YY	
DRAWING NUMBER			SHEET 3 OF 3 DWG		
497-3545-00			4		
			SIZE		