

| PART NUMBER | MODEL NUMBER | CUSTOMER CONNECTIONS (SUCTION & DISCHARGE) |
|-------------|--------------|--|
| 497-3339-00 | ZB95KCE      | BRAZED                                     |
|             | ZB114KCE     |  |
| 497-3339-01 | ZB95KCE      | ROTALOCK                                   |
|             | ZB114KCE     |  |

| SPECIFICATIONS |                   |
|----------------|-------------------|
| ES NO.         | DESCRIPTION       |
| ES92-155       | CONVERSION-METRIC |

NOTES:

1 ALL TOLERANCES  $\pm 1.5$  (0.06) UNLESS OTHERWISE SPECIFIED. DUE TO ACCUMULATED ASSEMBLY TOLERANCES THE LISTED COMPONENTS MAY VARY FROM THE MOUNTING HOLES AS TABULATED.

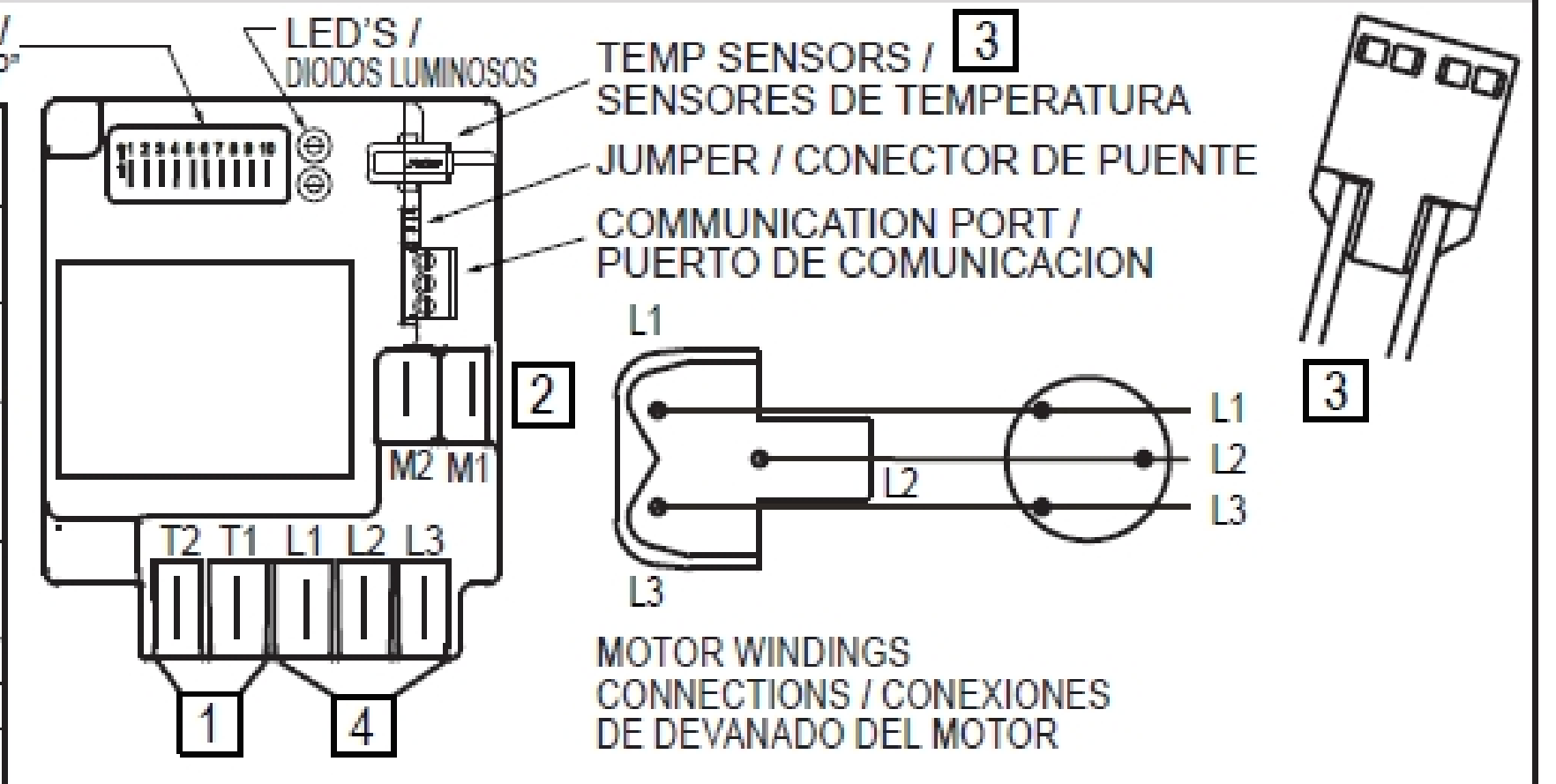
◆ SUCTION FITTING  $\pm 3.0$  (0.12)

◆ DISCHARGE FITTING  $\pm 3.0$  (0.12)

2. TUBE ENDS MUST BE PLUGGED.

3 TORQUE NUT 3.6-4.4 NEWTON-METERS [31.9-38.9 IN-LBS]

| ALERT CODE (RED) / CODIGO DE ALERTA (ROJO) | TYPE / TIPO                        | EVENT / EVENTO  |
|--|------------------------------------|---|
| SOLID / SOLIDO                             | LOCKOUT / BLOQUEADO                | LOSS OF FUNCTION / PERDIDA DE FUNCION   |
| 1  | TRIP / DISPARO                     | MOTOR HIGH TEMPERATURE / TEMPERATURA DEL MOTOR ELEVADA                                |
| 2  | LOCKOUT/TRIP / BLOQUEADO / DISPARO | OPEN/SHORT MOTOR THERMISTOR / TERMISTOR DEL MOTOR EN CIRCUITO ABIERTO O CORTOCIRCUITO |
| 3  | LOCKOUT / BLOQUEADO                | SHORT CYCLING / CICLOS CORTOS   |
| 4  | N/A                                | N/A   |
| 5  | N/A                                | FUTURE USE / USO FUTURO   |
| 6  | LOCKOUT/TRIP / BLOQUEADO / DISPARO | MISSING PHASE / PERDIDA DE FASE   |
| 7  | LOCKOUT / BLOQUEADO                | REVERSE PHASE / INVERSIÓN DE FASE   |
| 8  | N/A                                | FUTURE USE / USO FUTURO   |
| 9  | TRIP / DISPARO                     | MODULE LOW VOLTAGE / BAJO VOLTAJE AL MÓDULO   |
| WARNING (GREEN) / PRECAUCION (VERDE)       | TYPE / TIPO                        | EVENT / EVENTO  |
| SOLID / SOLIDO                             | NORMAL / NORMAL                    | NORMAL OPERATION / OPERACION NORMAL   |
| 1  | WARNING / PRECAUCION               | LOSS OF COMMUNICATION / PERDIDA DE COMUNICACIÓN                                       |
| 2  | WARNING / PRECAUCION               | FUTURE USE / USO FUTURO   |
| 3  | WARNING / PRECAUCION               | SHORT CYCLING / CICLOS CORTOS   |
| 4  | N/A                                | N/A   |
| 5  | WARNING / PRECAUCION               | FUTURE USE / USO FUTURO   |



WARNING: GREEN FLASHING + PAUSE 2 SEC. / PRECAUCIÓN: LUZ VERDE DESTELLANTE + PAUSA DE 2 SEG.

TRIP: RED FLASHING + PAUSE 2 SEC. / DISPARO: LUZ ROJA DESTELLANTE + PAUSA DE 2 SEG.

LOCKOUT: RED FLASHING + PAUSE 2 SEC. + SOLID 3 SEC. + PAUSE 2 SEC. / BLOQUEO: LUZ ROJA DESTELLANTE + PAUSA DE 2 SEG. + LUZ SOLIDA POR 3 SEG. + PAUSA DE 2 SEG.

| SYMBOLS / SIMBOLOS |  |
|--------------------|--|
| 1                  | PROTECTOR MODULE VOLTAGE / VOLTAGE DEL MÓDULO DE PROTECCION                            |
| 2                  | TO CONTROL CIRCUIT / AL CIRCUITO DE CONTROL  |
| 3                  | THERMAL SENSORS DO NOT SHORT / SENSORES DE TEMPERATURA - NO CONECTAR EN CORTO CIRCUITO |
| 4                  | PHASE SENSING / SENSOR DE FASES  |

USE COPPER CONDUCTORS ONLY.  
 USE MINIMUM 75° C WIRE FOR AMPACITY DETERMINATION.  
 USE THIS EQUIPMENT ON A GROUNDED SYSTEM ONLY.  
 PRIMARY SINGLE PHASE FAILURE PROTECTION IS PROVIDED.  
 PROTECTOR MODULE AND OPTIONAL CRANKCASE HEATER MUST BE CONNECTED ONLY TO THEIR RATED VOLTAGE.  
 OVERCURRENT PROTECTION DEVICE RATING AND TYPE MUST BE IN ACCORDANCE WITH REGULATORY AGENCY END PRODUCT APPROVALS - SEE SYSTEM NAMEPLATE.

UTILICE CONDUCTORES DE COBRE ÚNICAMENTE.  
 UTILICE CABLE DE 75° C COMO MÍNIMO PARA DETERMINAR LA AMPACIDAD.  
 UTILICE ESTE EQUIPO EN SISTEMAS CONECTADOS A TIERRA SOLAMENTE.  
 SE PROVEE PROTECCION DE FALLA MONOFASICA EN EL CIRCUITO PRIMARIO.  
 EL MÓDULO DE PROTECCION Y EL CALENTADOR DE CARTER OPCIONAL DEBERAN CONECTARSE A SU VOLTAJE NOMINAL RESPECTIVO.  
 EL TIPO Y LAS CARACTERÍSTICAS NOMINALES DEL DISPOSITIVO DE PROTECCIÓN DE SOBRECORRIENTE DEBERÁN RESPETAR LAS APROBACIONES DE LA AGENCIA REGLAMENTARIA PARA EL PRODUCTO FINAL  
 - VEA LA PLACA DE DATOS

| DIP SWITCH / INTERRUPTORES "DIP" | PURPOSE / PROPOSITO  | ON = 1 / PRENDIDO = 1 | OFF = 0 / APAGADO = 0      |
|----------------------------------|--|-----------------------|----------------------------|
| 1 - LSB                          |  |                       | 0                          |
| 2                                | UNIQUE ADDRESS / DIRECCION UNICA   |                       | 0                          |
| 3                                | RANGE 1 TO 32 / RANGO DE 1 A 32  | 1                     |                            |
| 4                                | (EXAMPLE = 12) / (EJEMPLO = 12)  | 1                     |                            |
| 5 - MSB                          |  |                       | 0                          |
| 6                                | BAUD RATE / FRECUENCIA DE TRANSMISIÓN EN BAUDIOS                               | 9,600                 | 19,200                     |
| 7                                | PARITY / PARIDAD   | EVEN / PAR            | NONE / NINGUNA             |
| 8                                | COMMUNICATION / COMUNICACION   | NETWORK / EN RED      | STANDALONE / INDEPENDIENTE |
| 9                                | TEMP. CONNECTOR CONFIGURATION / CONFIG. DEL CONECTOR DEL SENSOR DE TEMPERATURA |                       | 0                          |
| 10                               | SHORT CYCLE PROTECTION / PROTECCION CONTRA CICLOS CORTOS                       | ENABLE / ACTIVADO     | DISABLE / DESACTIVADO      |



INTERPRET PER ASME Y14.5M-1994 AND EMERSON DESIGN STANDARDS DS2002

DO NOT SCALE DRAWING

CRITICAL PRODUCT CHARACTERISTICS

UNLESS OTHERWISE SPECIFIED DIMENSIONS ARE MILLIMETER OR ( INCH )

TOLERANCES:  
 1-PLACE :  $\pm 0.13$   
 2-PLACE :  $\pm 0.25$   
 ANGULAR :  $\pm 1$

| ECN       | REV. NO. | DESCRIPTION               | DATE     | BY  | CHKD |
|-----------|----------|---------------------------|----------|-----|------|
| ECN307567 | 1        | CORRECTED INSTANCE NUMBER | 04-07-20 | VVP | AMN  |
| ECN307567 | 0        | RELEASED                  | 09-03-19 | VVP | AMN  |

ENG NOTICE NO. 15

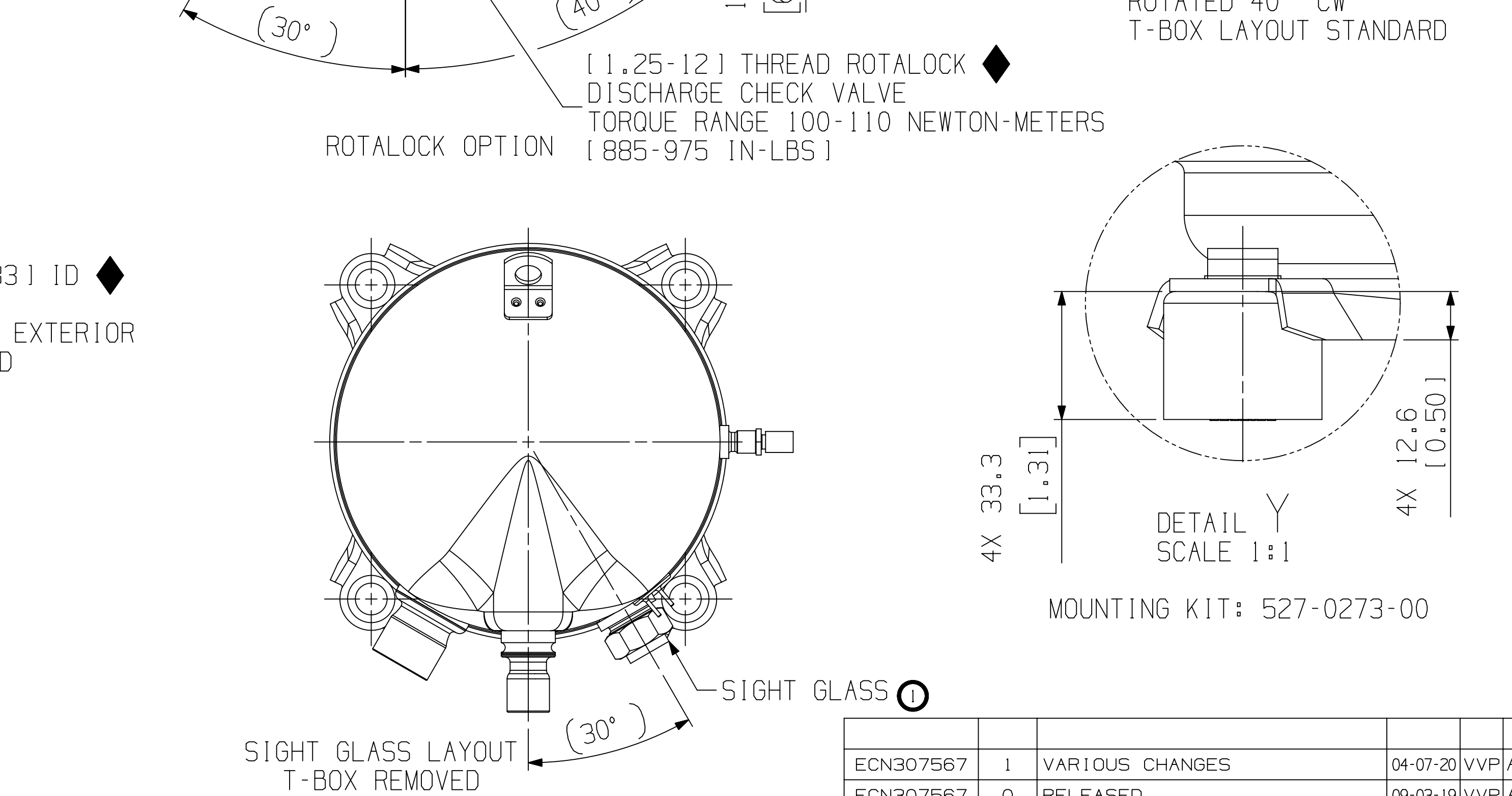
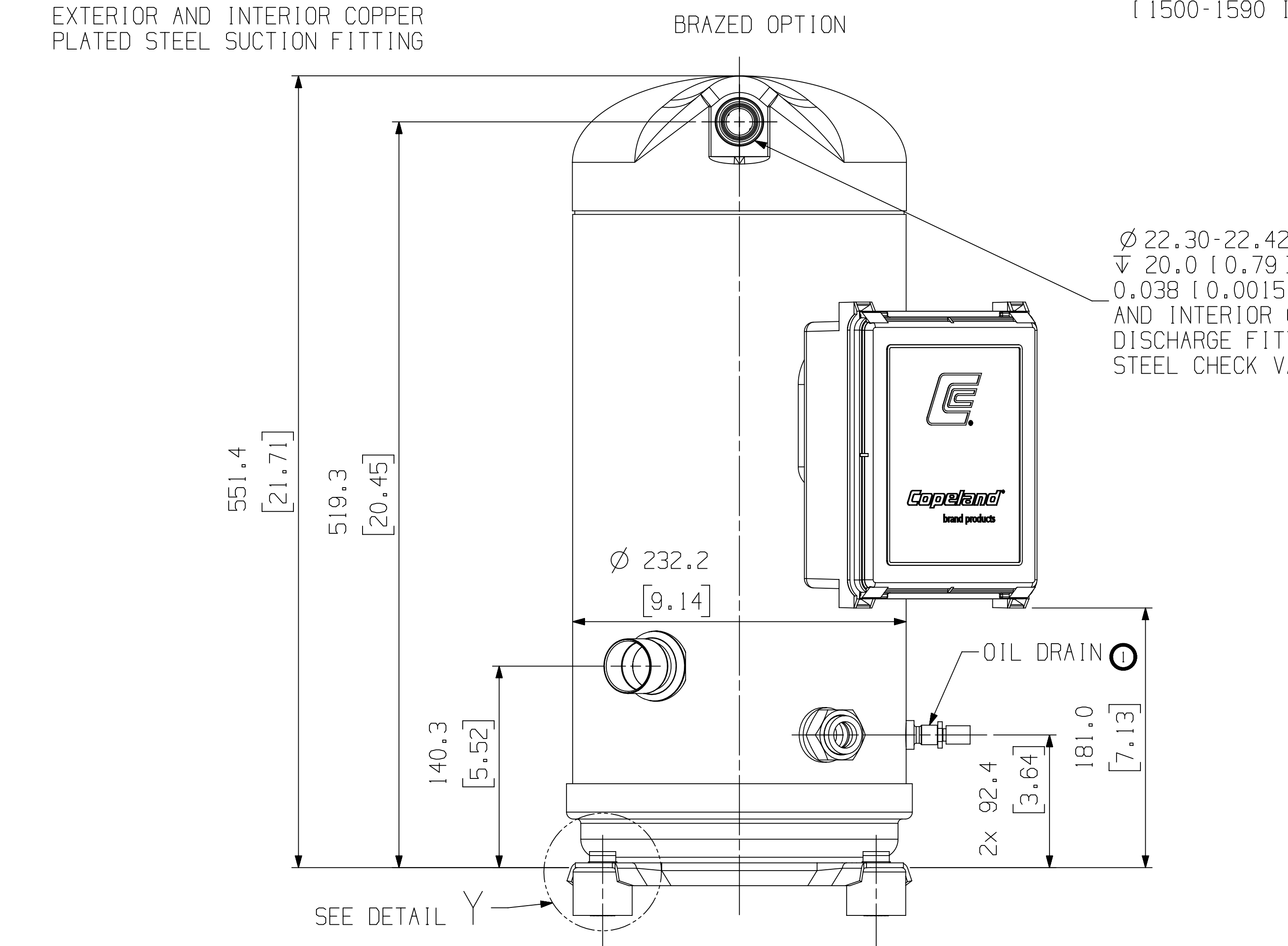
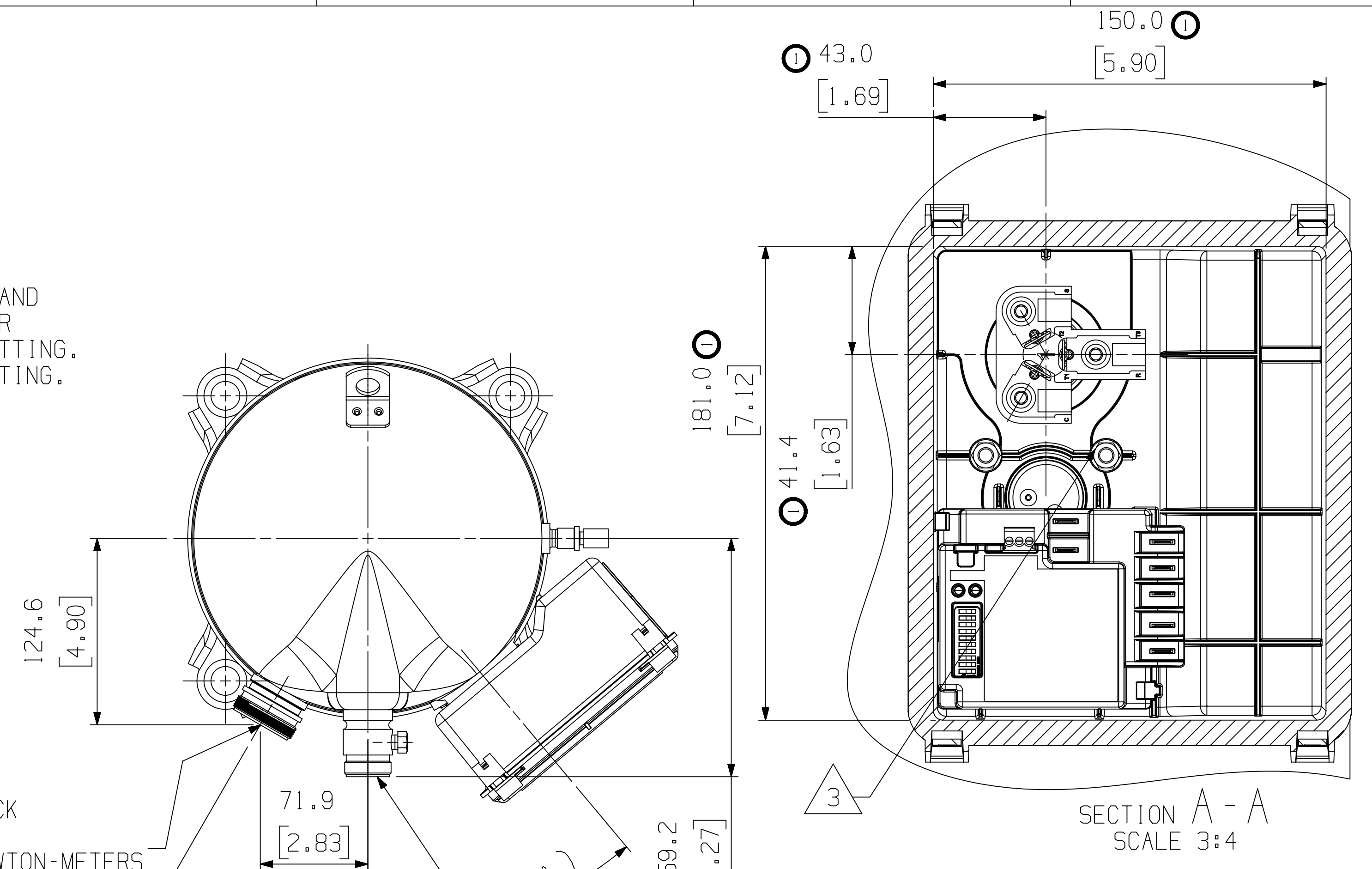
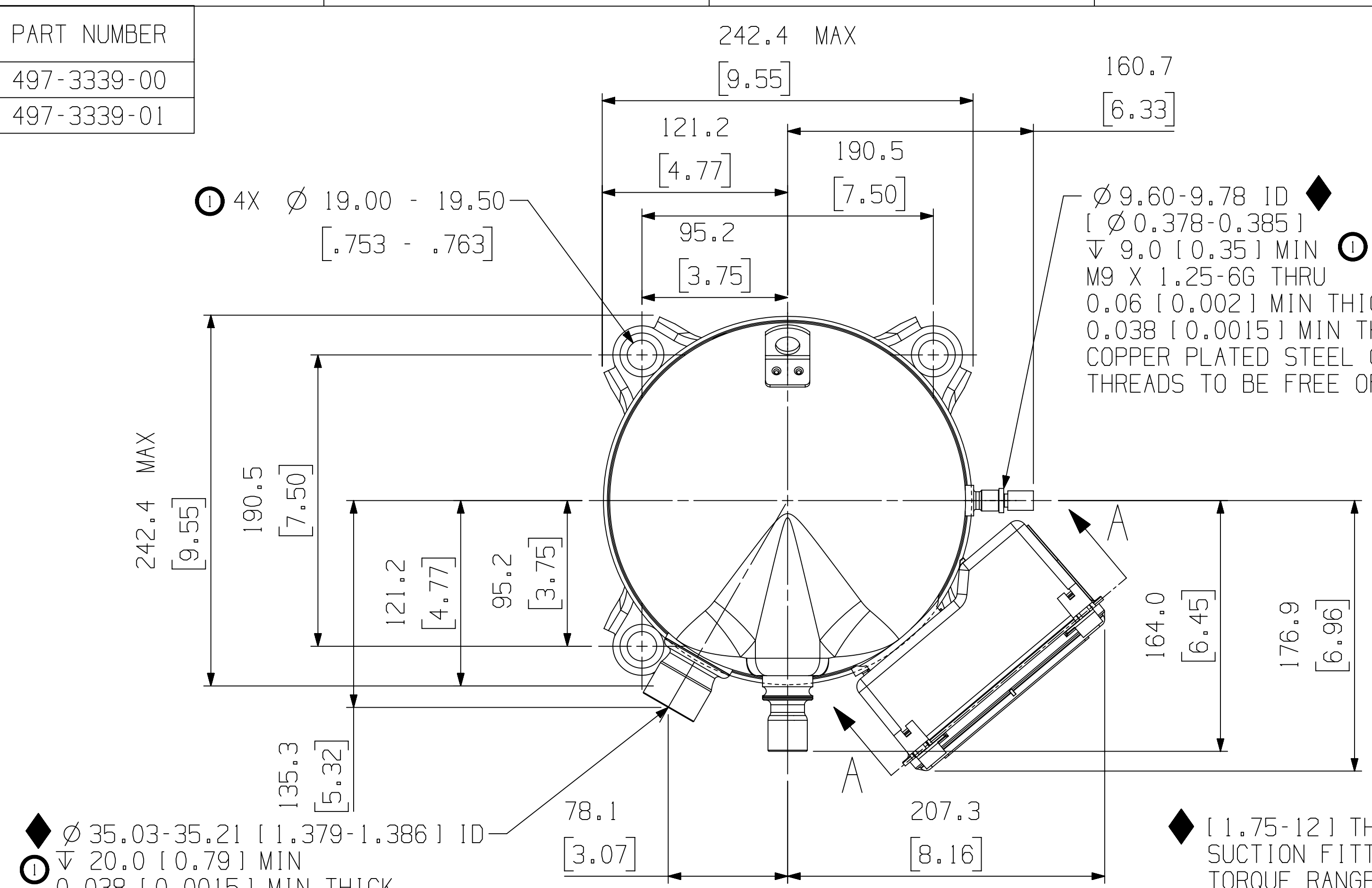
CONFIDENTIALITY NOTICE

THIS DRAWING AND INFORMATION CONTAINED HEREIN ARE THE EXCLUSIVE PROPERTY OF EMERSON CLIMATE TECHNOLOGIES, INC AND/OR ITS AFFILIATES (COLLECTIVELY "EMERSON") AND SHALL BE RETURNED UPON DEMAND AND SHALL NOT BE REPRODUCED IN WHOLE OR IN PART, DISCLOSED TO ANYONE ELSE OR USED, WITHOUT THE WRITTEN CONSENT OF EMERSON.

| MATERIAL SPECIFICATION | DRAWN BY | SUPERSEDES DWG NO / REV NO |
|------------------------|----------|----------------------------|
| N/A                    | VVP      | - / -                      |
|                        | DATE     | SCALE                      |
|                        | 09-03-19 | 1:3                        |

| TITLE                  | DRAWING NUMBER | SHEET 1 OF 2 DWG |
|------------------------|----------------|------------------|
| REF DWG-COPE COMP ASSM | 497-3339-00    | 4                |

|             |
|-------------|
| PART NUMBER |
| 497-3339-00 |
| 497-3339-01 |



**EMERSON**

**Copeland™**

INTERPRET PER ASME Y14.5M-1994 AND EMERSON DESIGN STANDARDS DS2002

DO NOT SCALE DRAWING

CRITICAL PRODUCT CHARACTERISTICS

UNLESS OTHERWISE SPECIFIED DIMENSIONS ARE MILLIMETER OR ( INCH )

TOLERANCES:

1-PLACE ±

2-PLACE ±

ANGULAR ±

|                        |   |                 |                     |                  |      |
|------------------------|---|-----------------|---------------------|------------------|------|
| ECN307567              | 1   | VARIOUS CHANGES | 04-07-20            | VVP              | AMN  |
| ECN307567              | 0   | RELEASED        | 09-03-19            | VVP              | AMN  |
| ENG NOTICE NO.         | REV. NO.  | REVISIONS       | DATE                | BY               | CHKD |
| CONFIDENTIALITY NOTICE |   |                 |                     |                  |      |
| 15                     | THIS DRAWING AND INFORMATION CONTAINED HEREIN ARE THE EXCLUSIVE PROPERTY OF EMERSON CLIMATE TECHNOLOGIES, INC AND/OR ITS AFFILIATES (COLLECTIVELY "EMERSON") AND SHALL BE RETURNED UPON DEMAND AND SHALL NOT BE REPRODUCED IN WHOLE OR IN PART, DISCLOSED TO ANYONE ELSE OR USED, WITHOUT THE WRITTEN CONSENT OF EMERSON. |                 |                     |                  |      |
| MATERIAL SPECIFICATION |   | DRAWN BY        | SUPERSEDES DWG NO / | REV NO           |      |
| N/A                    |   | VVP             | -                   | -                |      |
|                        |   | DATE            | SCALE               | DATE FORMAT:     |      |
|                        |   | 09-03-19        | 3:7                 | MM-DD-YY         |      |
| TITLE                  |   |                 | DRAWING NUMBER      | SHEET 2 OF 2 DWG |      |
| REF DWG-COPE COMP ASSM |   |                 | 497-3339-00         | 4                |      |
|                        |   |                 | SIZE                |                  |      |