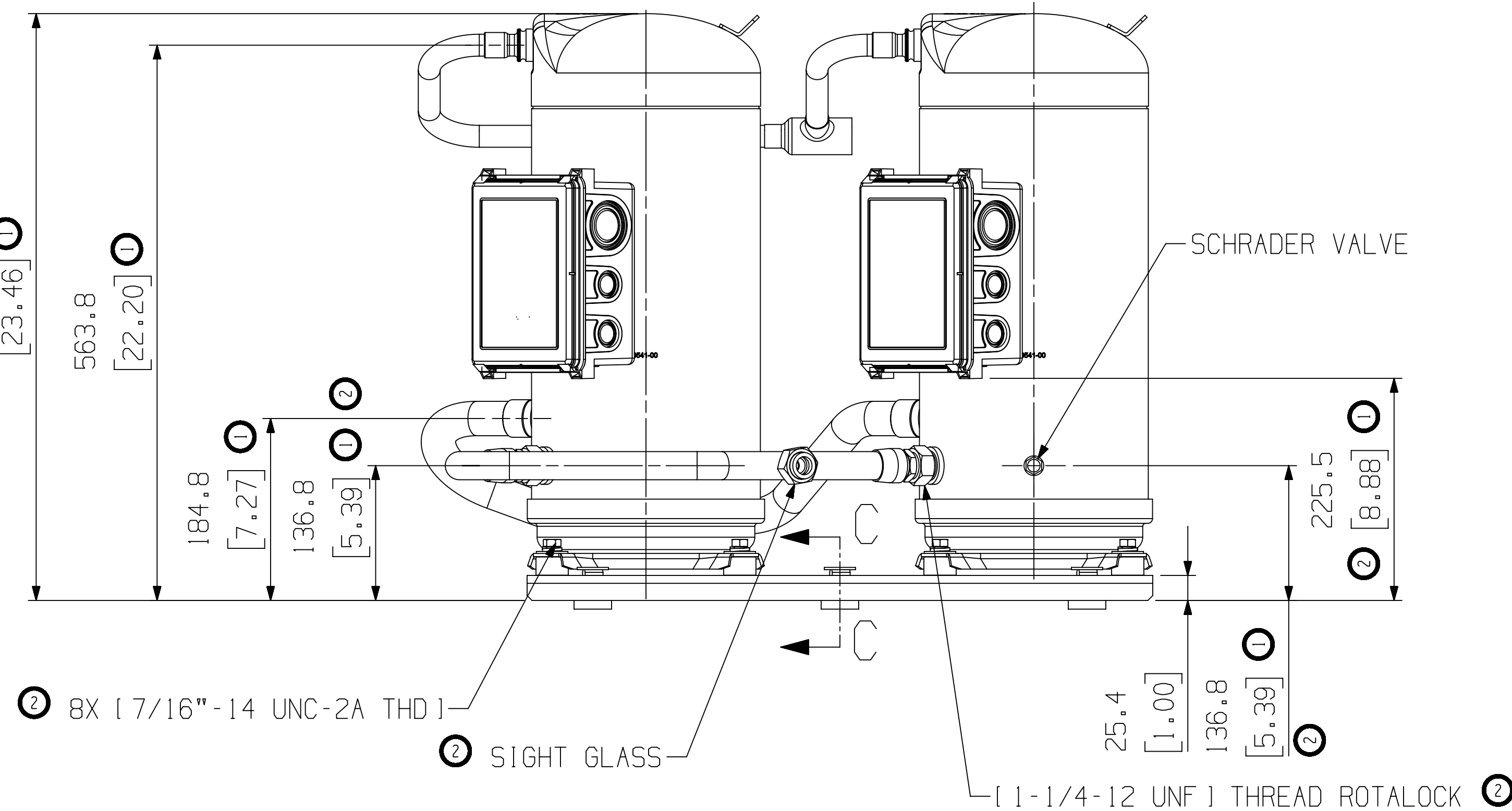
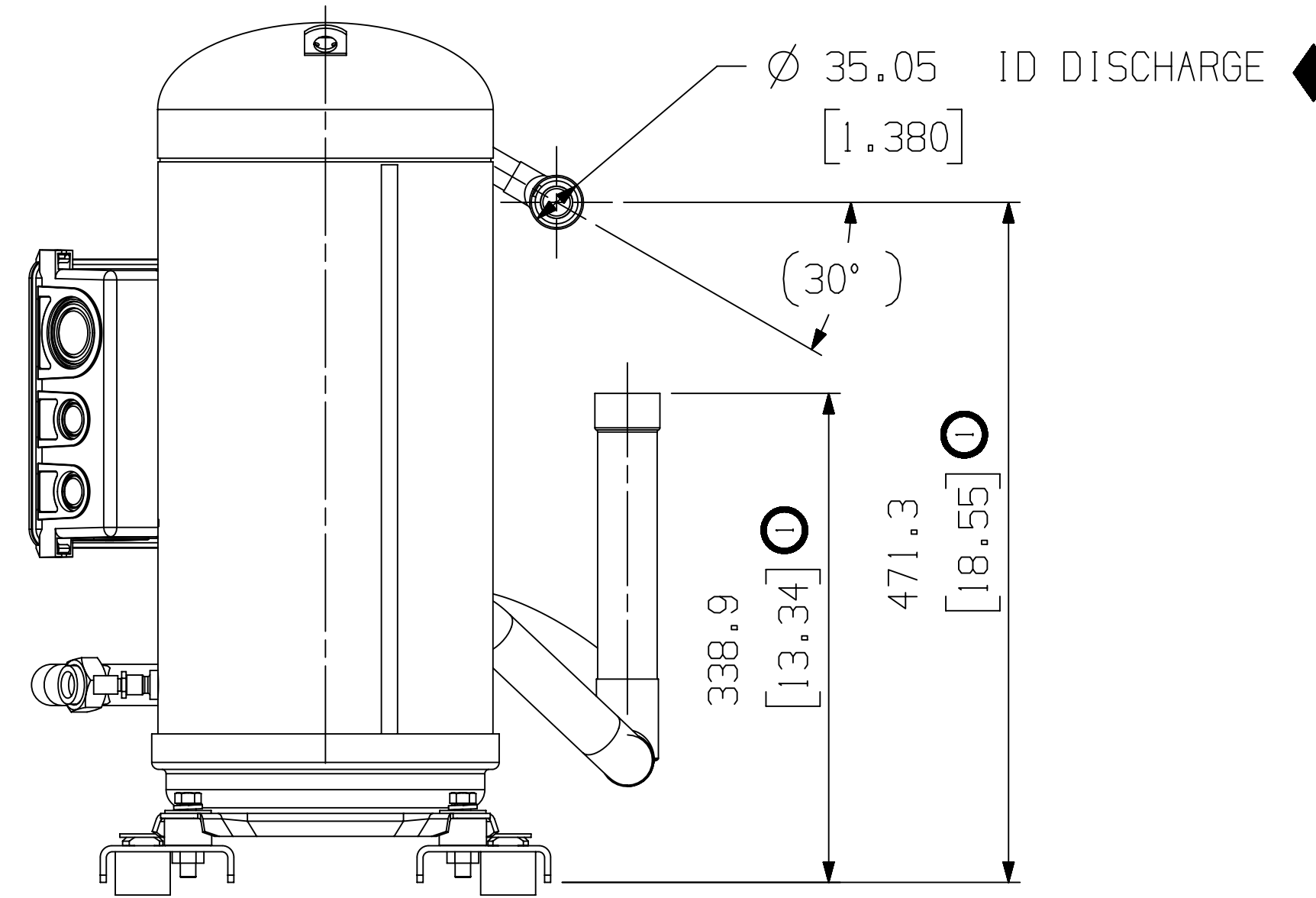
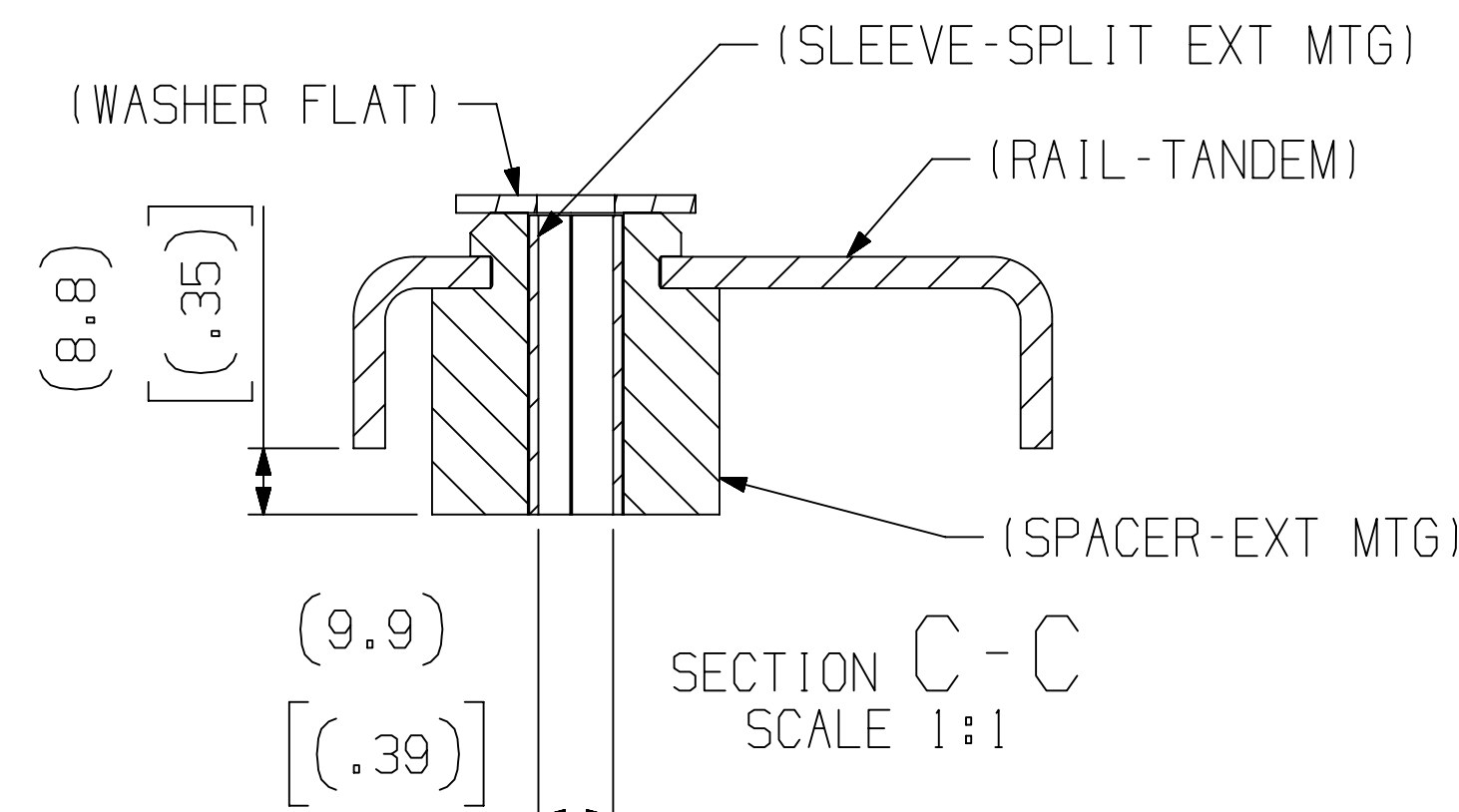
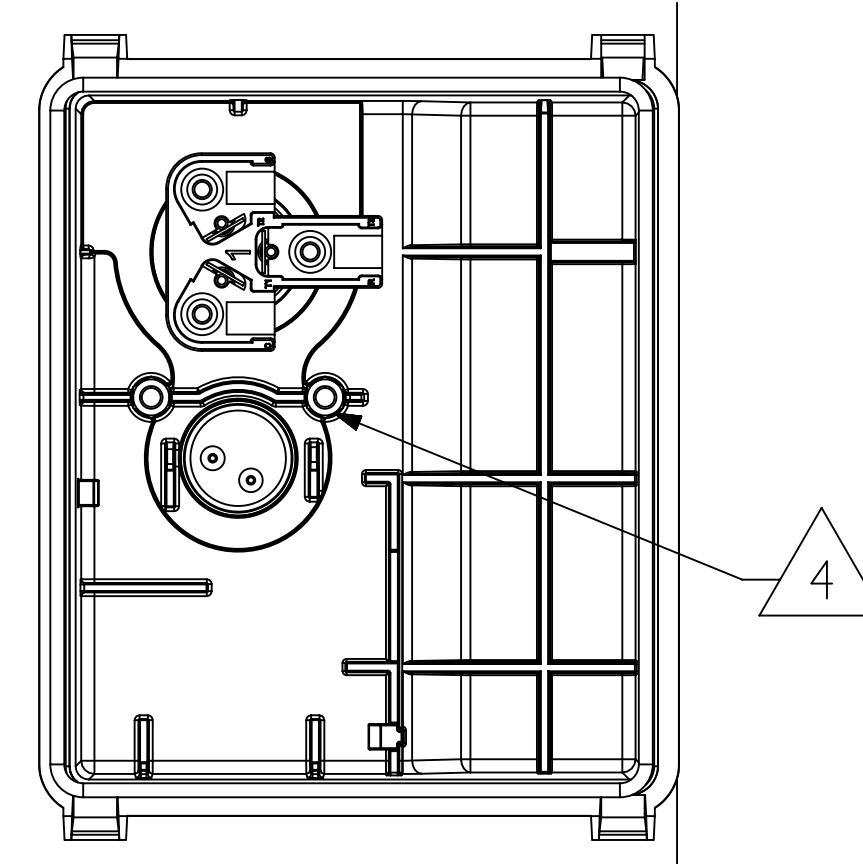
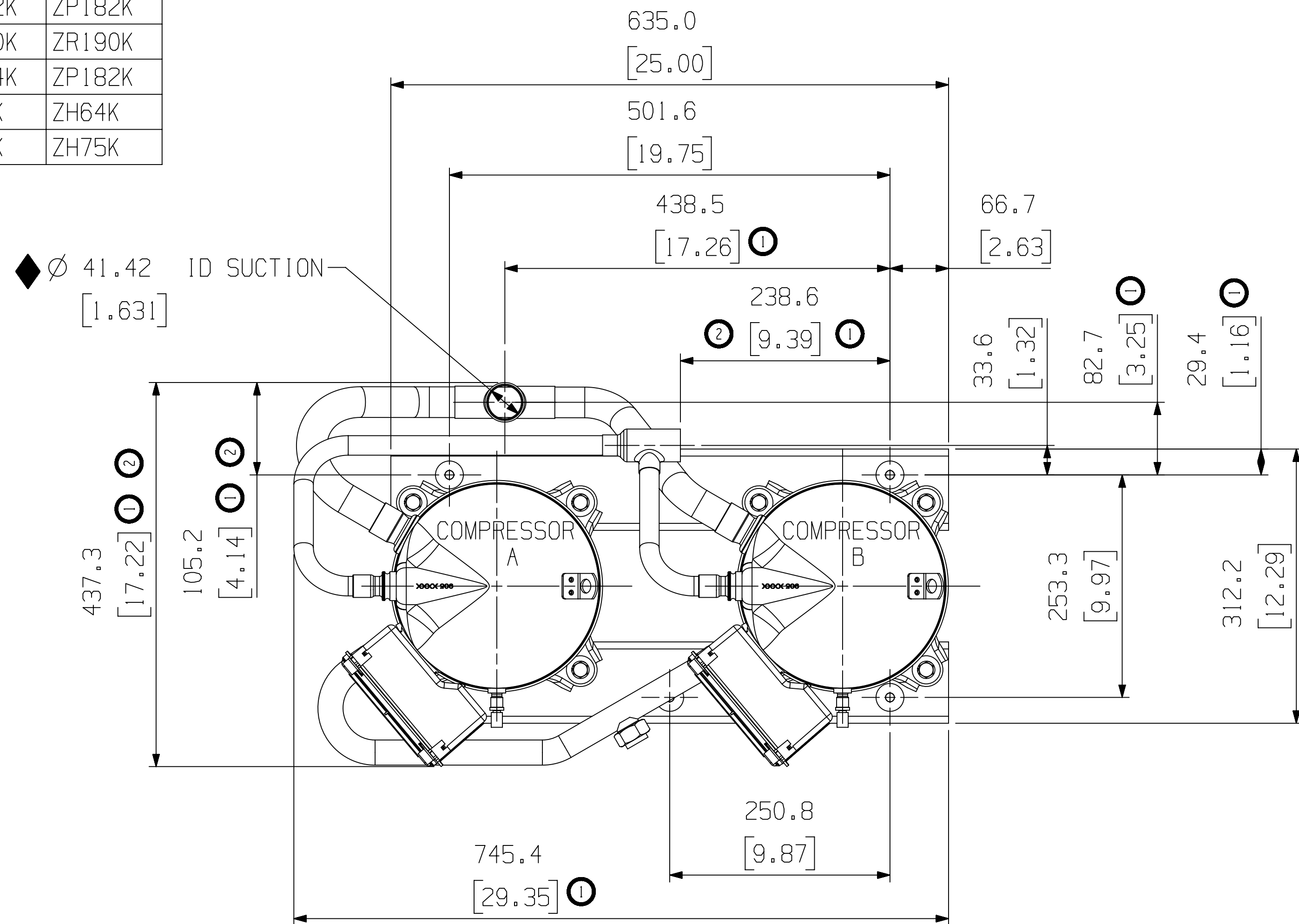


MODEL NUMBER	COMP "A"	COMP "B"
ZRT320K	ZR160K	ZR160K
ZRT380K	ZR190K	ZR190K
ZPT308K	ZP154K	ZP154K
ZPT364K	ZP182K	ZP182K
ZRU350K	ZR160K	ZR190K
ZPU336K	ZP154K	ZP182K
ZHT128K	ZH64K	ZH64K
ZHT150K	ZH75K	ZH75K

THREAD	TORQUE REQUIREMENTS	
7/16" UNC	90-125 IN LBS	10-14 Nm
1-1/4"-12 UNF	885-975 IN LBS	100-110 Nm
SIGHT GLASS	300-360 IN LBS	34-41 Nm

SPECIFICATIONS	
ES NO.	DESCRIPTION
ES92-155	CONVERSION-METRIC



- NOTES:
- 1 ALL TOLERANCES ± 1.5 (0.06)
 - UNLESS OTHERWISE SPECIFIED, DUE TO ACCUMULATED ASSEMBLY TOLERANCES THE LISTED COMPONENTS MAY VARY FROM THE MOUNTING HOLES AS TABULATED.
 - ◆ SUCTION FITTING ± 3.0 (0.12)
 - ◆ DISCHARGE FITTING ± 3.0 (0.12)
 - 2. MOUNTING KIT: 527-0177-00
 - 3. TUBE ENDS MUST BE PLUGGED.
 - 4. GROUNDING SCREW AND WASHER PER BOM

ALERT CODE (RED / FONDOS/ALERTAS)	TYPE / TIPO	EVENT / EVENTO	LED / LEDS / INDICADORES	TEMP SENSORS / 3 / SENSORES DE TEMPERATURA
1	LOCKOUT / BLOQUEADO	LOSS OF FUNCTION / PERDIDA DE FUNCION		NUMBER / CONECTOR DE TEMPERATURA
2	TRIP / DISPARO	MOTOR HIGH TEMPERATURE / TEMPERATURA DEL MOTOR ELEVADA		COMMUNICATION PORT / PUERTO DE COMUNICACION
3	LOCKOUT/TRIP / BLOQUEADO/ DISPARO	OPEN SHORT MOTOR WINDINGS / REBROTES DEL MOTOR EN CORTOCIRCUITO		L1
4	LOCKOUT / BLOQUEADO	SHORT CYCLING / CICLOS CORTOS		L2
5	N/A	FUTURE USE / USO FUTURO		L3
6	LOCKOUT/TRIP / BLOQUEADO/ DISPARO	MISSING PHASE / PERDIDA DE FASE		MOTOR WINDINGS CONNECTIONS / CONEXIONES DE ENDAVADO DEL MOTOR
7	LOCKOUT / BLOQUEADO	REVERSE PHASE / INVERSION DE FASE		
8	N/A	FUTURE USE / USO FUTURO		
9	TRIP / DISPARO	MODULE LOW VOLTAGE / BAJA VOLTAJE AL MÓDULO		
10	WARNING / PRECAUCION (VERDE)	SHORT CYCLING / CICLOS CORTOS		

WARNING: GREEN FLASHING + PAUSE 2 SEC. / PRECAUCION: LUZ VERDE DESTELLANTE + PAUSA DE 2 SEG.
 TRIP: RED FLASHING + PAUSE 2 SEC. / DISPARO: LUZ ROJA DESTELLANTE + PAUSA DE 2 SEG.
 LOCKOUT: RED FLASHING + PAUSE 2 SEC. + SOLID 3 SEC. + PAUSE 2 SEC. / BLOQUEO: LUZ ROJA DESTELLANTE + PAUSA DE 2 SEG. + LUZ SOLIDA POR 3 SEG. + PAUSA DE 2 SEG.

SYMBOLS / SIMBOLOS
 1) PROTECTOR MODULE VOLTAGE / VOLTAGE DEL MÓDULO DE PROTECCION
 2) TO CONTROL CIRCUIT / AL CIRCUITO DE CONTROL
 3) THERMAL SENSORS DO NOT SHORT / SENSORES DE TEMPERATURA - NO CONECTAR EN CORTO CIRCUITO
 4) PHASE SENSING / SENSOR DE FASES

USE COPPER CONDUCTORS ONLY / UTILICE CONDUCTORES DE COBRE ÚNICAMENTE
 USE MINIMUM 10# C WIRE FOR AMPACITY DETERMINATION / UTILICE ESTE EQUIPO EN SISTEMA CONECTADO A TIERRA SOLAMENTE.
 PRIMARY SINGLE PHASE FAILURE PROTECTION IS PROVIDED / SE PROVEE PROTECCION DE FALLA MONOFASICA EN EL CIRCUITO PRIMARIO.
 PROTECTOR MODULE AND OPTICAL ISOLATED HEATER MUST BE CONNECTED ONLY TO THEIR RATED VOLTAGE / EL MÓDULO DE PROTECCION Y EL CALENTADOR DE CARTER OPCIONAL DEBERAN CONECTARSE ÚNICAMENTE A SU VOLTAJE NOMINAL RESPECTIVAMENTE.
 9) TEMP CONNECTOR CONFIGURATION / CONFIGURACION DE CONECTOR DE TEMPERATURA: 0 = ENABLE / [DISEÑAR] 1 = DISABLE / [DESACTIVAR]
 10) SHORT CYCLE PROTECTION / PROTECCION CONTRA CICLOS CORTOS: 0 = ENABLE / [DISEÑAR] 1 = DISABLE / [DESACTIVAR]

ECN	REV. NO.	DESCRIPTION	DATE	BY	CHKD
ECN325315	3	UPDATED TITLE BLOCK	09-12-23		
ECN318895	2	ADDED THREAD-TORQUE TABLE	09-21-21	LKP	PBM
ECN201120	1	ADDED MODELS/CHANGED DIMENSIONS	08-02-16	JLS	LLB
ECN008133	0	RELEASED	02-21-14	KRB	LLB

ENG NOTICE NO.	REV. NO.	REVISIONS	DATE	BY	CHKD
40		CONFIDENTIALITY NOTICE			
THIS DRAWING AND INFORMATION CONTAINED HEREIN ARE THE EXCLUSIVE PROPERTY OF COPELAND LP AND/OR ITS AFFILIATES (COLLECTIVELY "COPELAND") AND SHALL BE RETURNED UPON DEMAND AND SHALL NOT BE REPRODUCED IN WHOLE OR IN PART, DISCLOSED TO ANYONE ELSE OR USED, WITHOUT THE WRITTEN CONSENT OF COPELAND.					
MATERIAL SPECIFICATION		DRAWN BY	SUPERSEDES DWG NO / REV NO		
N/A		KRB	- / -		
		DATE	SCALE	DATE FORMAT: MM-DD-YY	
		02-21-14	1:4		
TITLE		DRAWING NUMBER	SHEET 1 OF 2 DWG		
REF DWG-WELD COMP ASSM		497-3833-00	4		
		SIZE			

COPELAND

INTERPRET PER ASME Y14.5M-1994 AND COPELAND DESIGN STANDARDS DS2002

DO NOT SCALE DRAWING

CRITICAL PRODUCT CHARACTERISTICS

UNLESS OTHERWISE SPECIFIED, DIMENSIONS ARE MILLIMETER OR (INCH)

TOLERANCES:
 1-PLACE: N/A
 2-PLACE: N/A
 ANGULAR: N/A

1

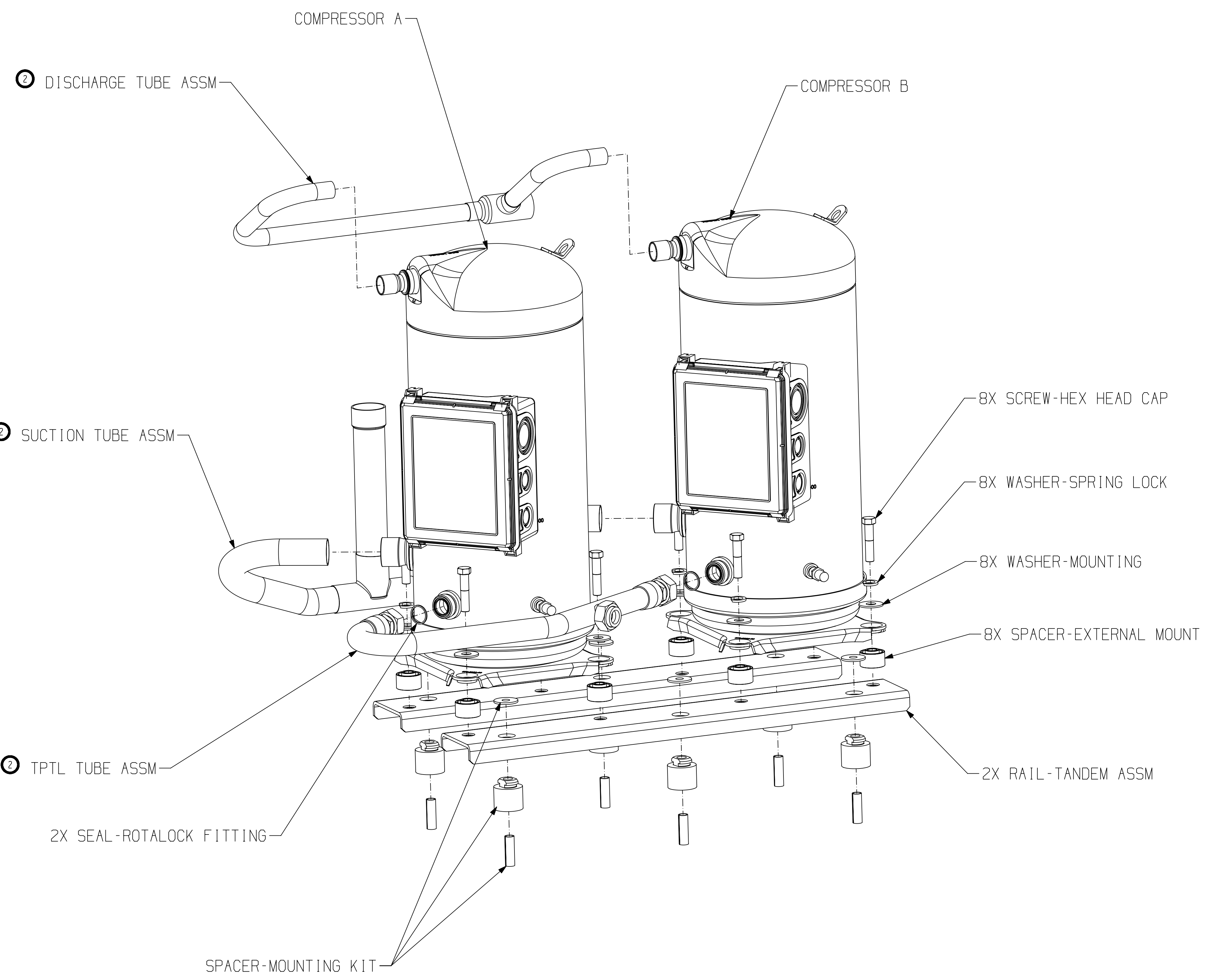
©COPYRIGHT COPELAND - CONFIDENTIAL

D

C

B

A



ECN325315	3	UPDATED TITLE BLOCK	09-12-23		
ECN318895	2	CHANGED PART CALLOUTS	09-21-21	LKP	PBM
ECN201120	1	ADDED SHEET	08-02-16	JLS	LLB
ECN008133	0	RELEASED	02-21-14	KRB	LLB
ENG NOTICE NO.	REV.NO.	REVISIONS	DATE	BY	CHKD

40 CONFIDENTIALITY NOTICE
 THIS DRAWING AND INFORMATION CONTAINED HEREIN ARE THE EXCLUSIVE PROPERTY OF COPELAND LP AND/OR ITS AFFILIATES (COLLECTIVELY "COPELAND") AND SHALL BE RETURNED UPON DEMAND AND SHALL NOT BE REPRODUCED IN WHOLE OR IN PART, DISCLOSED TO ANYONE ELSE OR USED, WITHOUT THE WRITTEN CONSENT OF COPELAND.

MATERIAL SPECIFICATION	DRAWN BY	SUPERSEDES DWG NO / REV NO
N/A	KRB	- / -
	DATE	SCALE
	02-21-14	1:3
TITLE	DRAWING NUMBER	SHEET 2 OF 2 DWG
REF DWG-WELD COMP ASSM	497-3833-00	4
		SIZE

COPELAND

INTERPRET PER ASME Y14.5M-1994 AND COPELAND DESIGN STANDARDS DS2002

DO NOT SCALE DRAWING

CRITICAL PRODUCT CHARACTERISTICS

UNLESS OTHERWISE SPECIFIED DIMENSIONS ARE MILLIMETER OR (INCH)

TOLERANCES:
 1-PLACE : N/A
 2-PLACE : N/A
 ANGULAR : N/A

©COPYRIGHT COPELAND - CONFIDENTIAL