

MODEL NUMBER
ZRT162KC/KCE-TFD/TF5/TF7/TFE

SPECIFICATIONS	
ES NO.	DESCRIPTION
ES92-155	CONVERSION-METRIC

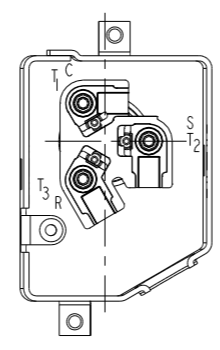
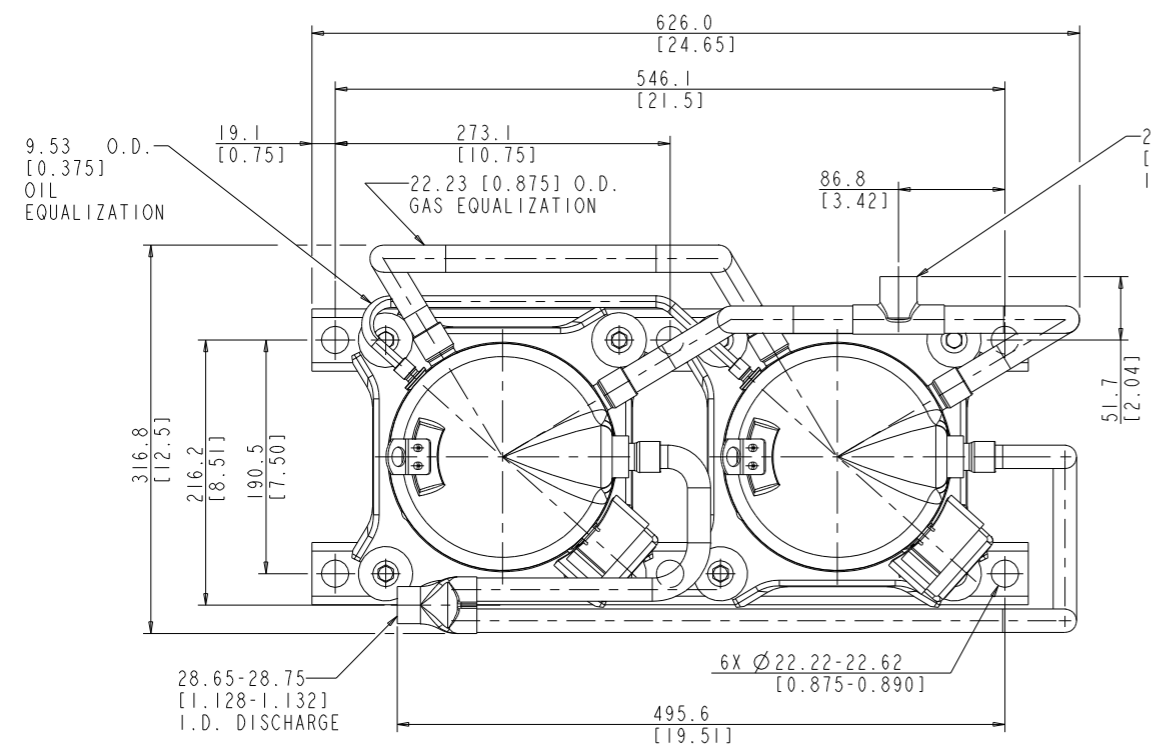
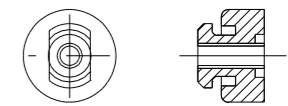
NOTES:
1 ALL TOLERANCES ± 1.50 [0.060] UNLESS OTHERWISE SPECIFIED.

DUE TO ACCUMULATED ASSEMBLY TOLERANCES THE LISTED COMPONENTS MAY VARY FROM THE MOUNTING HOLES AS SHOWN BELOW:

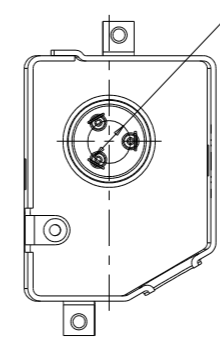
SUCTION FITTING : ± 4.60 [0.18]
DISCHARGE FITTING: ± 4.60 [0.18]

- 2 MOUNTING KIT.
3. TUBE ENDS MUST BE PLUGGED.
4. OIL SPECIFICATIONS:
ZRT162KC MODELS:
BLENDED WHITE MINERAL OIL,
VISCOSITY GRADE 46 CENTISTOKES
(999-5170-31)
ZRT162KCE MODELS:
POE-POLYOL ESTER OIL,
VISCOSITY GRADE 32 CENTISTOKES
(999-5171-13)

2	
GROMMET DUROMETER	6 FOOT KIT
35-45	527-0150-00

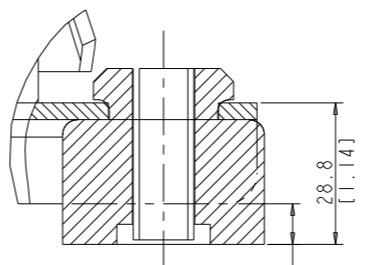
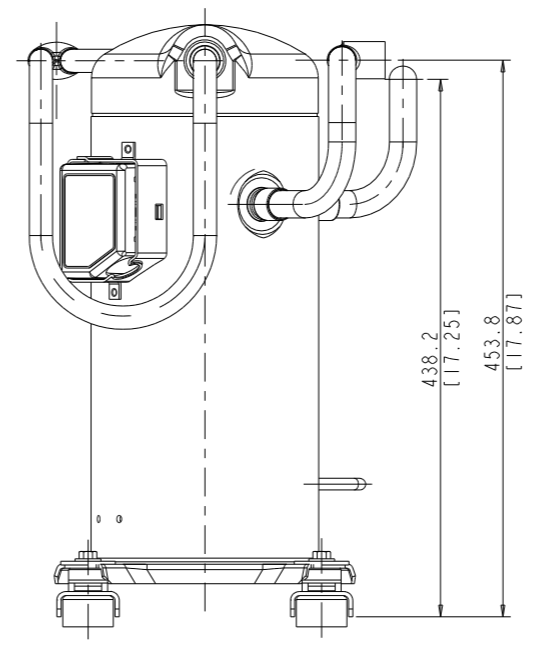
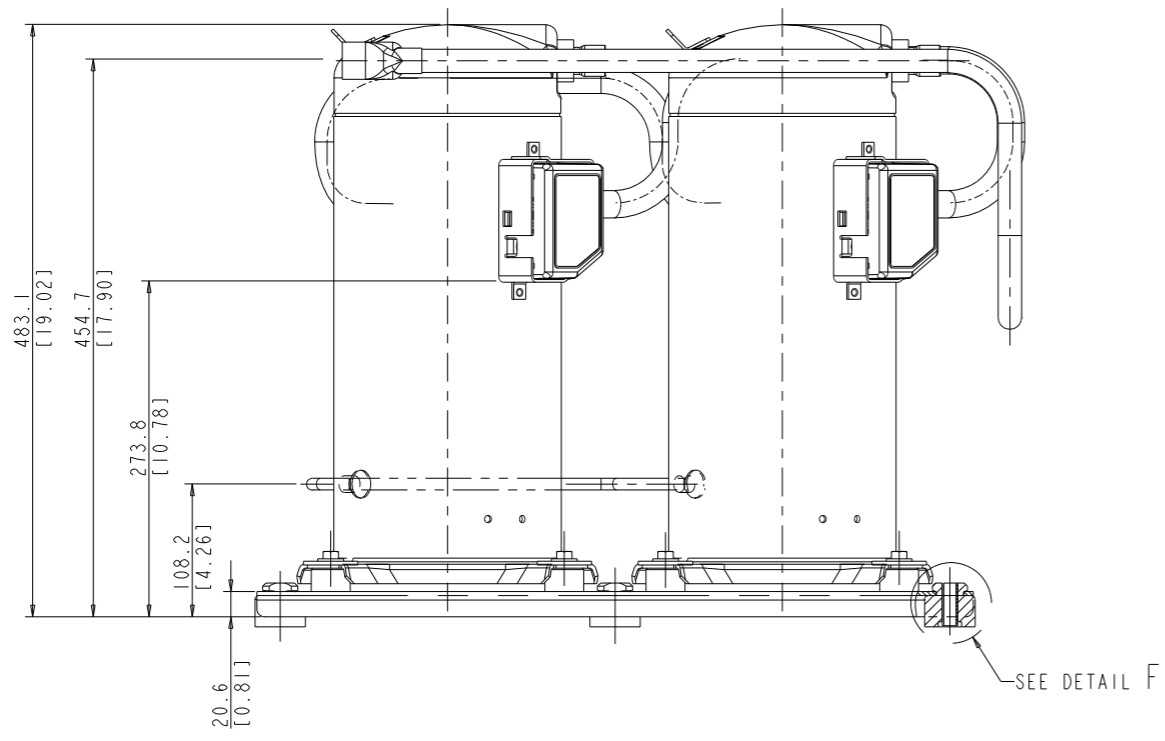


T'BOX LAYOUT
OPTIONAL



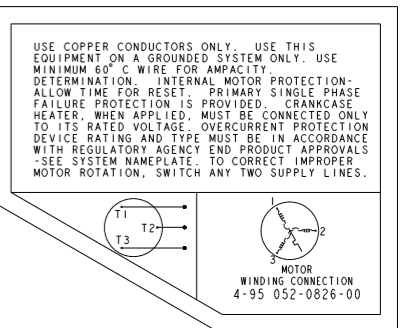
T'BOX LAYOUT
STANDARD

Ø17.45 PIN CIRCLE [0.687]
MODELS: TFD, TFE, TF7
Ø13.46 PIN CIRCLE [0.530]
MODELS: TF5



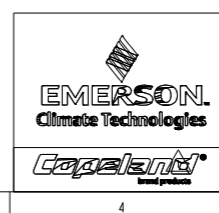
DETAIL F
SCALE 2:1

COMPRESSOR WIRING DIAGRAM
THREE PHASE MOTOR WITH
INTERNAL PROTECTION



USE COPPER CONDUCTORS ONLY. USE THIS EQUIPMENT ON A GROUNDED SYSTEM ONLY. USE MINIMUM 60°C WIRE FOR AMPACITY DETERMINATION. INTERNAL MOTOR PROTECTION-ALLOW TIME FOR RESET. PRIMARY SINGLE PHASE FAILURE PROTECTION IS PROVIDED. CRANKCASE HEATER WHEN APPLIED, MUST BE CONNECTED ONLY TO ITS RATED VOLTAGE. OVERCURRENT PROTECTION DEVICE RATING AND TYPE MUST BE IN ACCORDANCE WITH REGULATORY AGENCY END PRODUCT APPROVALS -SEE SYSTEM NAMEPLATE TO CORRECT IMPROPER MOTOR ROTATION. SWITCH ANY TWO SUPPLY LINES.

ENG NOTICE NO.	REV. NO.	REVISIONS	DATE	BY	CHKD	APPR
32-0906-047	11	CHANGED FORMAT FOR PROJECT INC	02-23-07	SVK	CHK	RST
32-1004-105	10	REMOVED & CORRECTED DIMENSIONS	10-29-04	TDS	GDD	
32-0903-104	9	REDRAWN AND REVISED	05-12-03	MMD	GD	
32-0398-018	0	RELEASED	01-21-99	RB	GD	



INTERPRET PER ASME Y14.5M-1994 AND EMERSON CLIMATE TECHNOLOGIES, INC. DESIGN STANDARDS DS2002 DO NOT SCALE DRAWING THIRD ANGLE PROJECTION

UNLESS OTHERWISE SPECIFIED DIMENSIONS ARE MILLIMETER OR (INCH)

TOLERANCES:
1-PLACE \pm
2-PLACE \pm
ANGULAR \pm

MATERIAL SPECIFICATION		DRAWN BY		SUPERSEDES DWG. NO. / REV. NO.	
N/A		OTL		497-2709-00 / 8	
DATE		DATE		DATE FORMAT:	
05-12-03		05-12-03		MM-DD-YY	
SCALE		SCALE		DRAWING NUMBER	
1:2		1:2		497-2709-00	
TITLE		SHEET 1 OF 1		SHEET 5 OF 5	
REF DWG-WELD COMP ASSM		DRAWING NUMBER		SHEET 1 OF 1	
		497-2709-00		5	