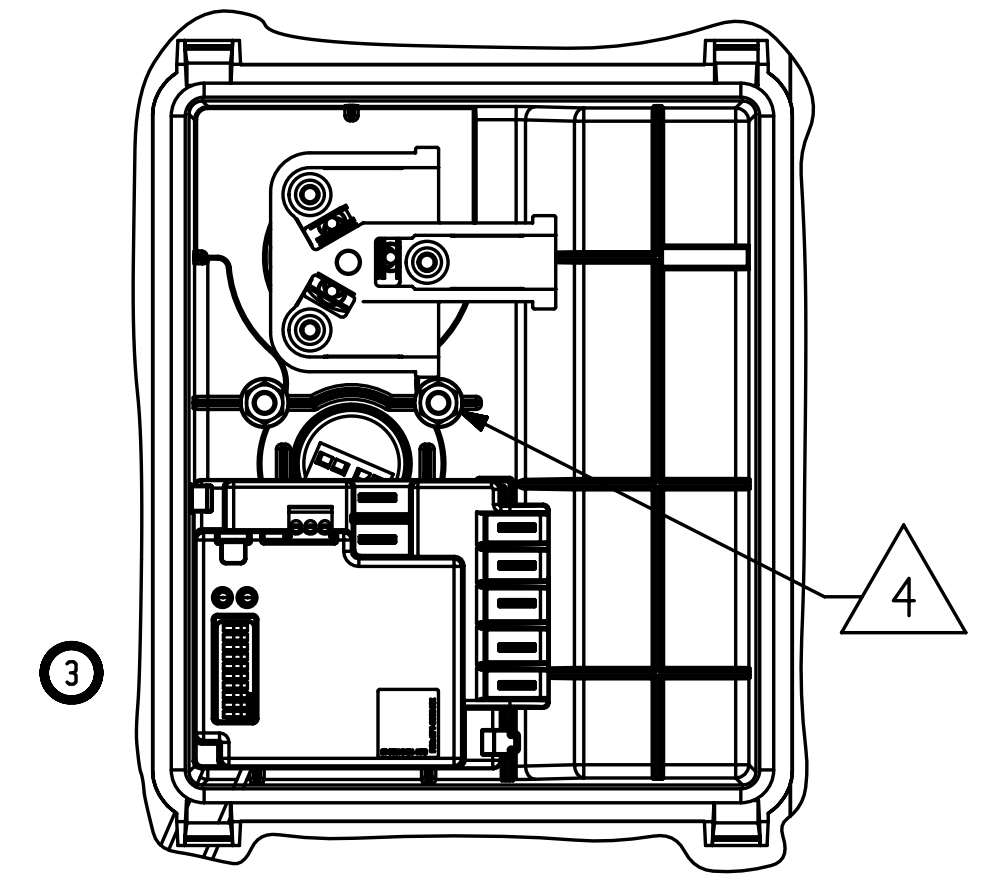


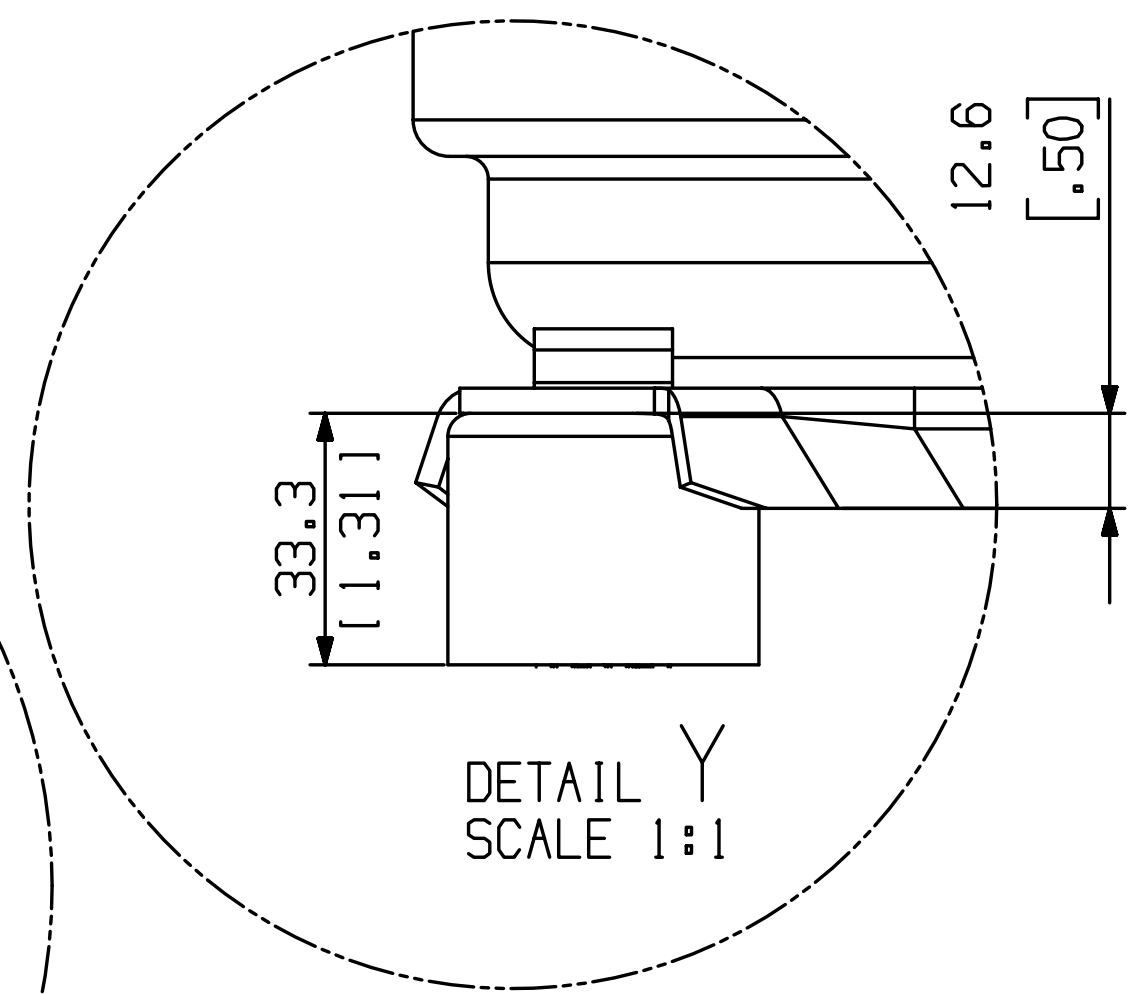
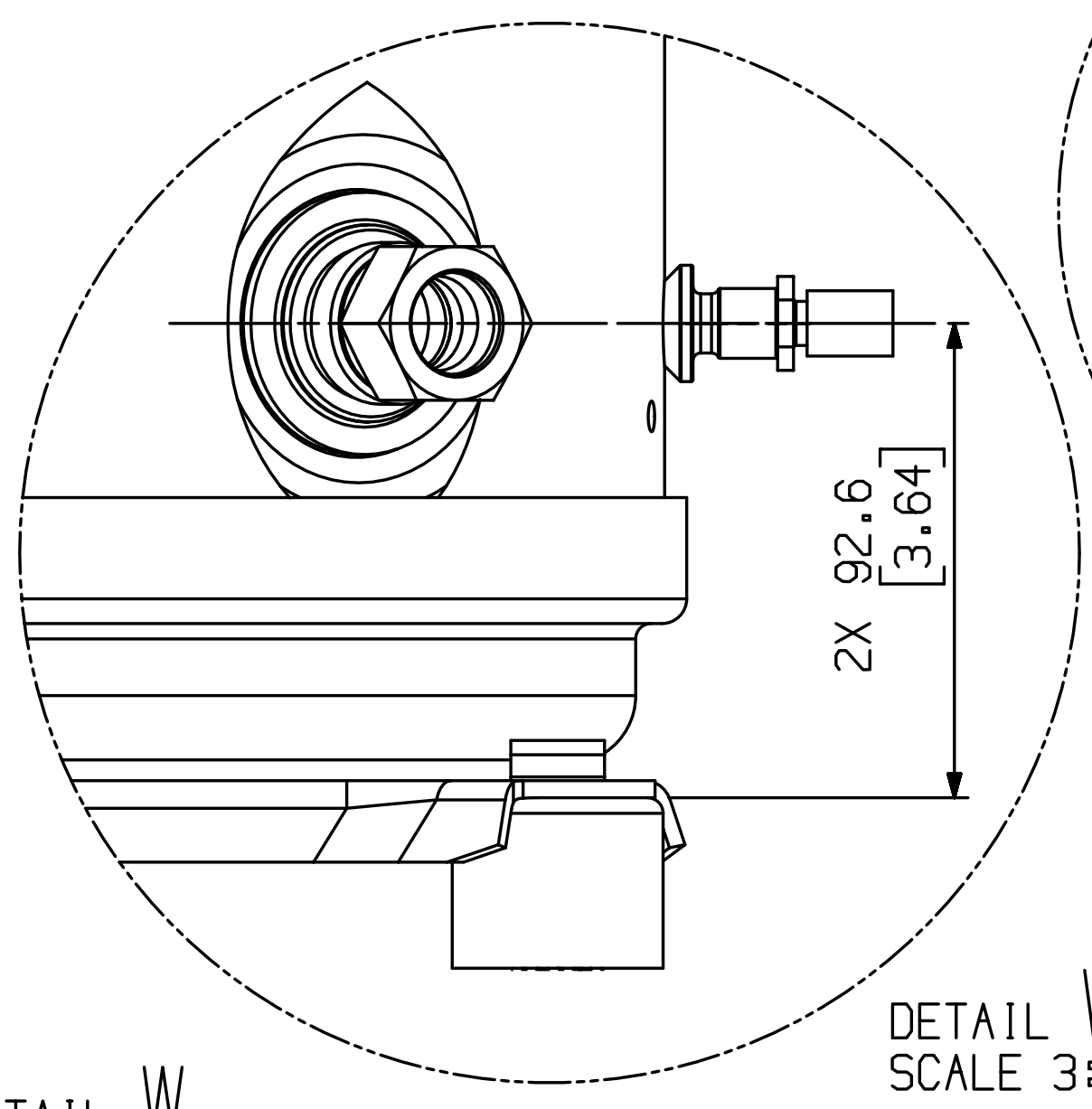
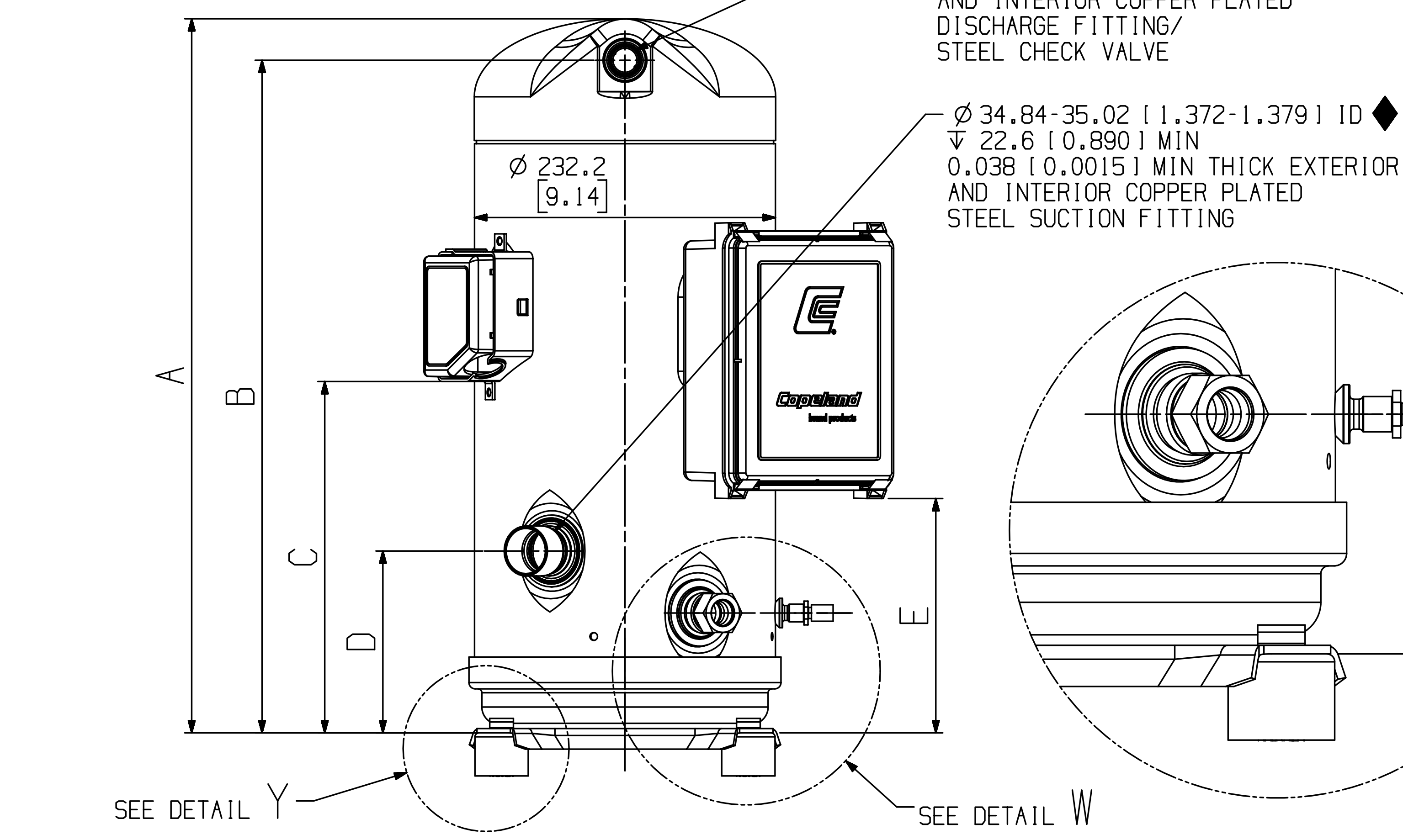
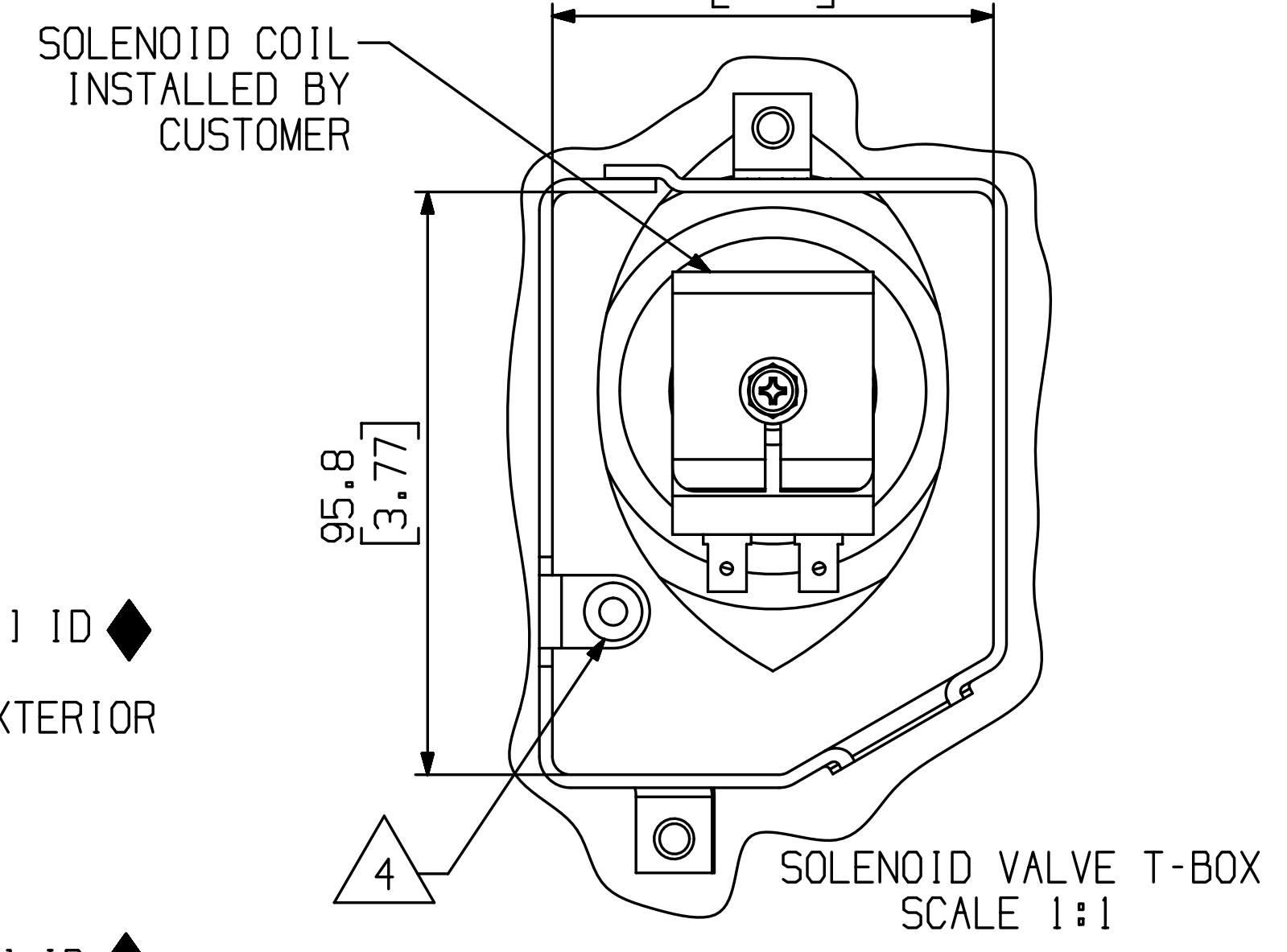
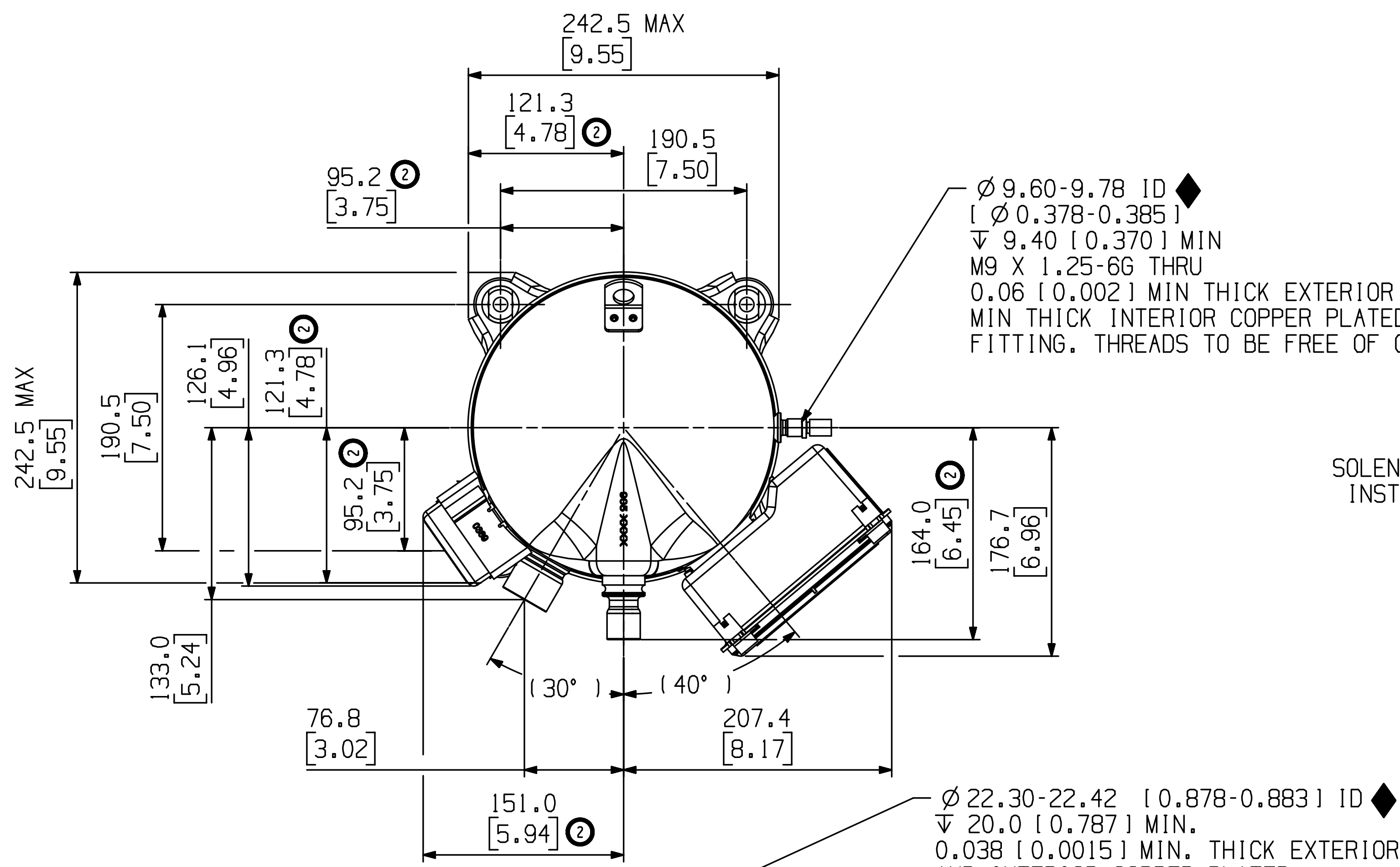
PART NUMBER	MODEL NUMBER	A	B	C	D	E
497-1610-00	ZPD154/182/181KCE	551.5 [21.71]	519.5 [20.45]	271.3 [10.68]	140.5 [5.53]	181.0 [7.12]
497-1610-01	ZPD154/182/181KCE	551.5 [21.71]	519.5 [20.45]	271.3 [10.68]	140.5 [5.53]	181.0 [7.12]

SPECIFICATIONS	
ES NO.	DESCRIPTION
ES92-155	CONVERSION-METRIC
ES81-340	TORQUE SPEC

- NOTES:
- 1 ALL TOLERANCES ± 1.5 [0.06] UNLESS OTHERWISE SPECIFIED. DUE TO ACCUMULATED ASSEMBLY TOLERANCES THE LISTED COMPONENTS MAY VARY FROM THE MOUNTING HOLES AS TABULATED.
 - 2 SUCTION FITTING ± 3.0 [0.12]
 - 3 DISCHARGE FITTING ± 3.0 [0.12]
 - 2. MOUNTING KIT: 527-0210-00
 - 3. TUBE ENDS MUST BE PLUGGED.
 - 4 GROUNDING SCREW AND WASHER PER BOM

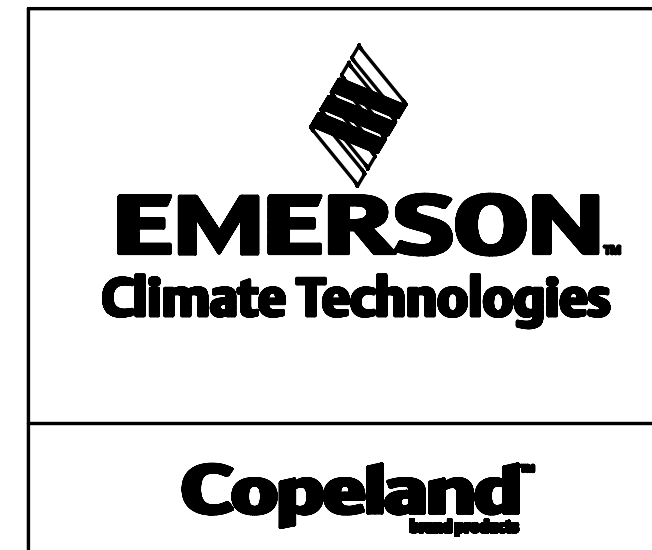


TERMINAL BOX LAYOUT STANDARD
SCALE 1:2



ALERT CODE (RED) / CÓDIGO DE ALERTA (ROJO)	SOLID / SOLIDO	TYPE / TIPO	EVENT / EVENTO
1		LOCKOUT / BLOQUEADO / TRIP / DISPARO	LOSS OF FUNCTION / PERDIDA DE FUNCION / MOTOR HIGH TEMPERATURE / TEMPERATURA DEL MOTOR ELEVADA
2		LOCKOUT / BLOQUEADO / DISPARO	OPEN / SHORT MOTOR THERMISTOR / TERMISTOR DEL MOTOR EN CIRCUITO ABIERTO / CORTOCIRCUITO
3		LOCKOUT / BLOQUEADO	SHORT CYCLING / CICLOS CORTOS
4		N/A	FUTURE USE / USO FUTURO
5		N/A	FUTURE USE / USO FUTURO
6		LOCKOUT / BLOQUEADO / DISPARO	MISSING PHASE / PERDIDA DE FASE
7		LOCKOUT / BLOQUEADO	REVERSE PHASE / INVERSION DE FASE
8		N/A	FUTURE USE / USO FUTURO
9		TRIP / DISPARO	MODULE LOW VOLTAGE / BAJO VOLTAJE AL MODULO
WARNING (GREEN) / PRECAUCION (VERDE)			
1		NORMAL / NORMAL	NORMAL OPERATION / OPERACION NORMAL
2		WARNING / PRECAUCION	LOSS OF COMMUNICATION / PERDIDA DE COMUNICACION
3		WARNING / PRECAUCION	FUTURE USE / USO FUTURO
4		WARNING / PRECAUCION	SHORT CYCLING / CICLOS CORTOS
5		N/A	N/A
		WARNING / PRECAUCION	FUTURE USE / USO FUTURO

DIP SWITCH	PURPOSE / PROPOSITO	ON = 1 / PRENDIDO = 1	OFF = 0 / APAGADO = 0
1-LSB	UNIQUE ADDRESS / DIRECCION UNICA	1	0
2	RANGE 1 TO 32 / RANGO DE 1 A 32 (EXAMPLE = 12) / (EJEMPLO = 12)	1	0
5-MSB	PARITY / PARIDAD	1	0
6	BAUD RATE / FRECUENCIA DE TRANSMISION EN BAUDS	3,600	19,200
7	NETWORK / REDES	1	0
8	COMMUNICATION / COMUNICACION	NETWORK / REDES	STANDALONE / EN RED / INDEPENDIENTE
9	TEMP. CONNECTOR CONFIGURATION / CONFIG. DEL CONECTOR DEL SENSOR DE TEMPERATURA	ENABLE / ACTIVABLE	DISABLE / DESACTIVABLE
10	SHORT CYCLE PROTECTION / PROTECCION CONTRA CICLOS CORTOS	ENABLE / ACTIVABLE	DISABLE / DESACTIVABLE



INTERPRET PER ASME Y14.5M-1994 AND EMERSON CLIMATE TECHNOLOGIES, INC. DESIGN STANDARDS DS2002
DO NOT SCALE DRAWING
THIRD ANGLE PROJECTION
CRITICAL PRODUCT CHARACTERISTICS
UNLESS OTHERWISE SPECIFIED DIMENSIONS ARE MILLIMETER OR (INCH)
TOLERANCES:
1-PLACE ± N/A
2-PLACE ± N/A
ANGULAR ± N/A

ECN	REV. NO.	DESCRIPTION	DATE	BY	CHKD	APPR
ECN009051	3	PICTORIALLY UPDATED T-BOX VIEW	09-24-14	VPV	LLB	KJR
ECN008614	2	REVISED & REDRAWN WITH CHANGES	06-16-14	LKP	LLB	KJR
ECN007348	0	RELEASED	10-09-13	NUG	LLB	KJR

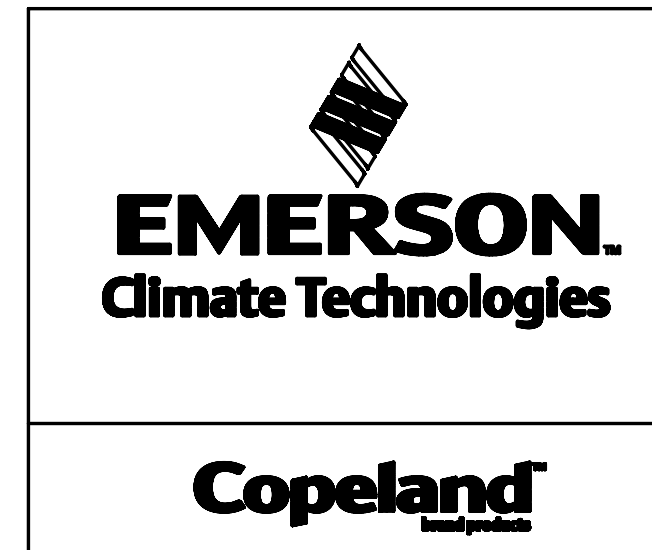
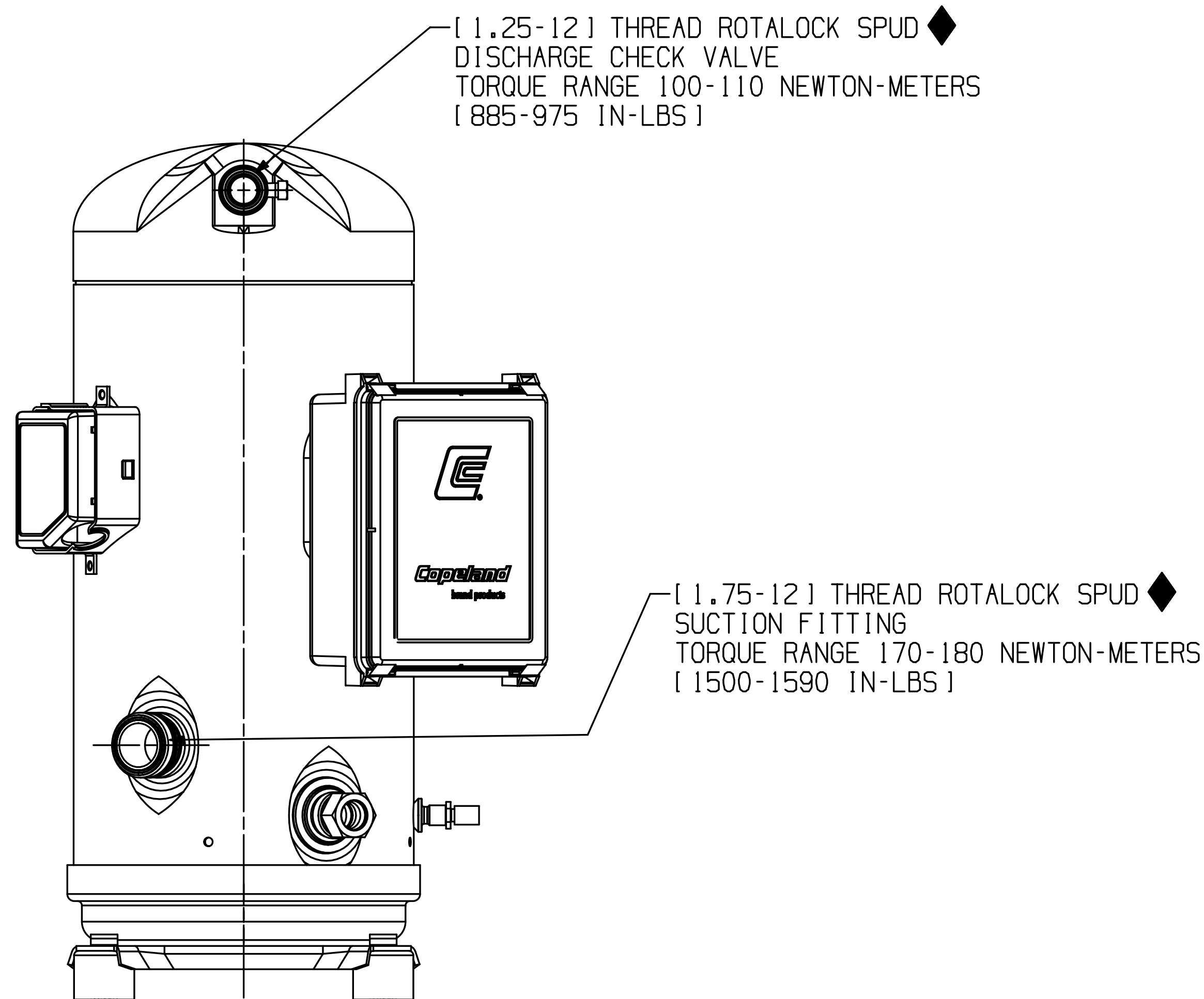
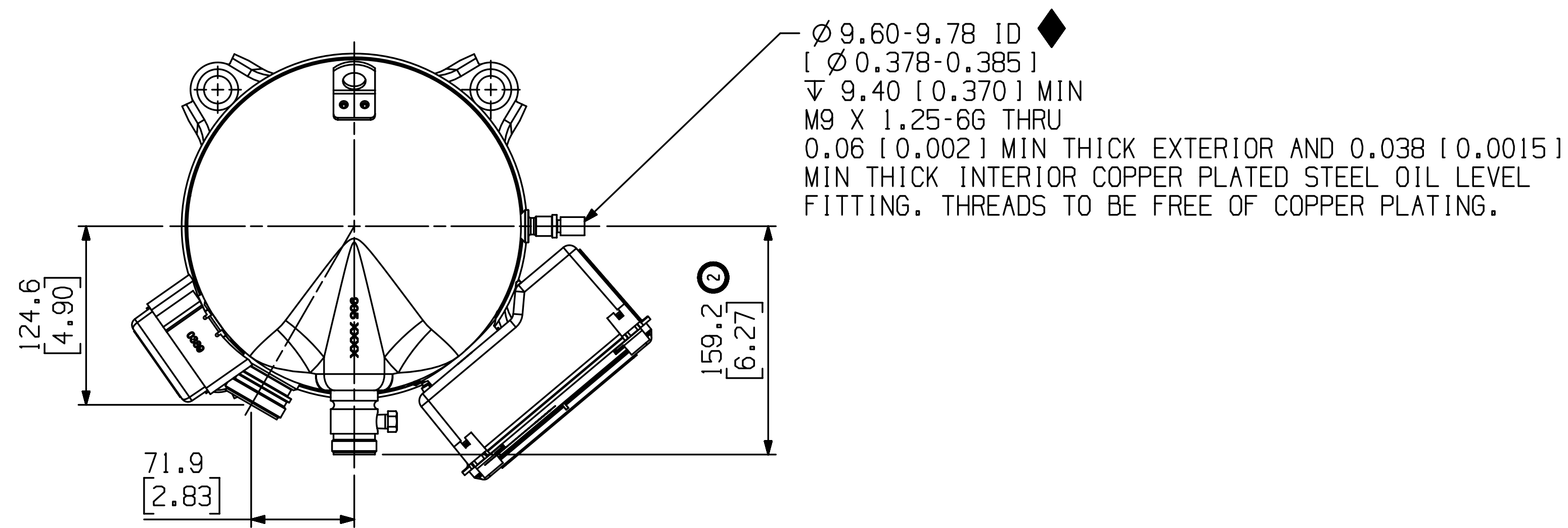
ENG NOTICE NO.	REV. NO.	REVISIONS	DATE	BY	CHKD	APPR
15		THIS DRAWING AND INFORMATION CONTAINED HEREIN ARE THE EXCLUSIVE PROPERTY OF EMERSON CLIMATE TECHNOLOGIES, INC. AND SHALL BE RETURNED UPON DEMAND AND SHALL NOT BE REPRODUCED IN WHOLE OR IN PART DISCLOSED TO ANYONE ELSE OR USED, WITHOUT THE WRITTEN CONSENT OF EMERSON CLIMATE TECHNOLOGIES, INC.				

MATERIAL SPECIFICATION	DRAWN BY	SUPERSEDES DWG. NO. / REV. NO.
N/A	LKP	497-1610-00/001
	DATE	SCALE
	06-16-14	3:8
		DATE FORMAT: MM-DD-YY

TITLE	DRAWING NUMBER	SHEET 1 OF 2
REF DWG-WELD COMP ASM	497-1610-00	4

PART NUMBER
497-1610-01

SPECIFICATIONS	
ES NO.	DESCRIPTION
ES92-155	CONVERSION-METRIC
ES81-340	TORQUE SPEC



INTERPRET PER ASME
 Y14.5M-1994 AND
 EMERSON CLIMATE
 TECHNOLOGIES, INC.
 DESIGN STANDARDS DS2002
 DO NOT SCALE DRAWING
 THIRD ANGLE
 PROJECTION
 CRITICAL PRODUCT
 CHARACTERISTICS
 UNLESS OTHERWISE SPECIFIED
 DIMENSIONS ARE MILLIMETER OR (INCH)
 TOLERANCES:
 1-PLACE \pm N/A
 2-PLACE \pm N/A
 ANGULAR \pm N/A

ENG NOTICE NO.	REV.NO.	REVISIONS	DATE	BY	CHKD	APPR
ECN009051	3	SEE SHEET 1	09-24-14	VPV	LLB	KJR
ECN008614	2	REVISED & REDRAWN WITH CHANGES	06-16-14	LKP	LLB	KJR
ECN007348	0	RELEASED	10-09-13	NJG	LLB	KJR

15 CONFIDENTIALITY NOTICE
 THIS DRAWING AND INFORMATION CONTAINED HEREIN ARE THE EXCLUSIVE
 PROPERTY OF EMERSON CLIMATE TECHNOLOGIES, INC. AND SHALL BE RETURNED
 UPON DEMAND AND SHALL NOT BE REPRODUCED IN WHOLE OR IN PART
 DISCLOSED TO ANYONE ELSE OR USED, WITHOUT THE WRITTEN CONSENT OF
 EMERSON CLIMATE TECHNOLOGIES, INC.

MATERIAL SPECIFICATION	DRAWN BY	SUPERSEDES DWG. NO. / REV. NO.
N/A	LKP	497-1610-00/001
	DATE	SCALE
	06-16-14	3:8
TITLE	DRAWING NUMBER	SHEET 2 OF 2 DWG
REF DWG-WELD COMP ASM	497-1610-00	4
		SIZE

UNCONTROLLED - DO NOT MODIFY

COPYRIGHT EMERSON CLIMATE TECHNOLOGIES, INC. - CONFIDENTIAL