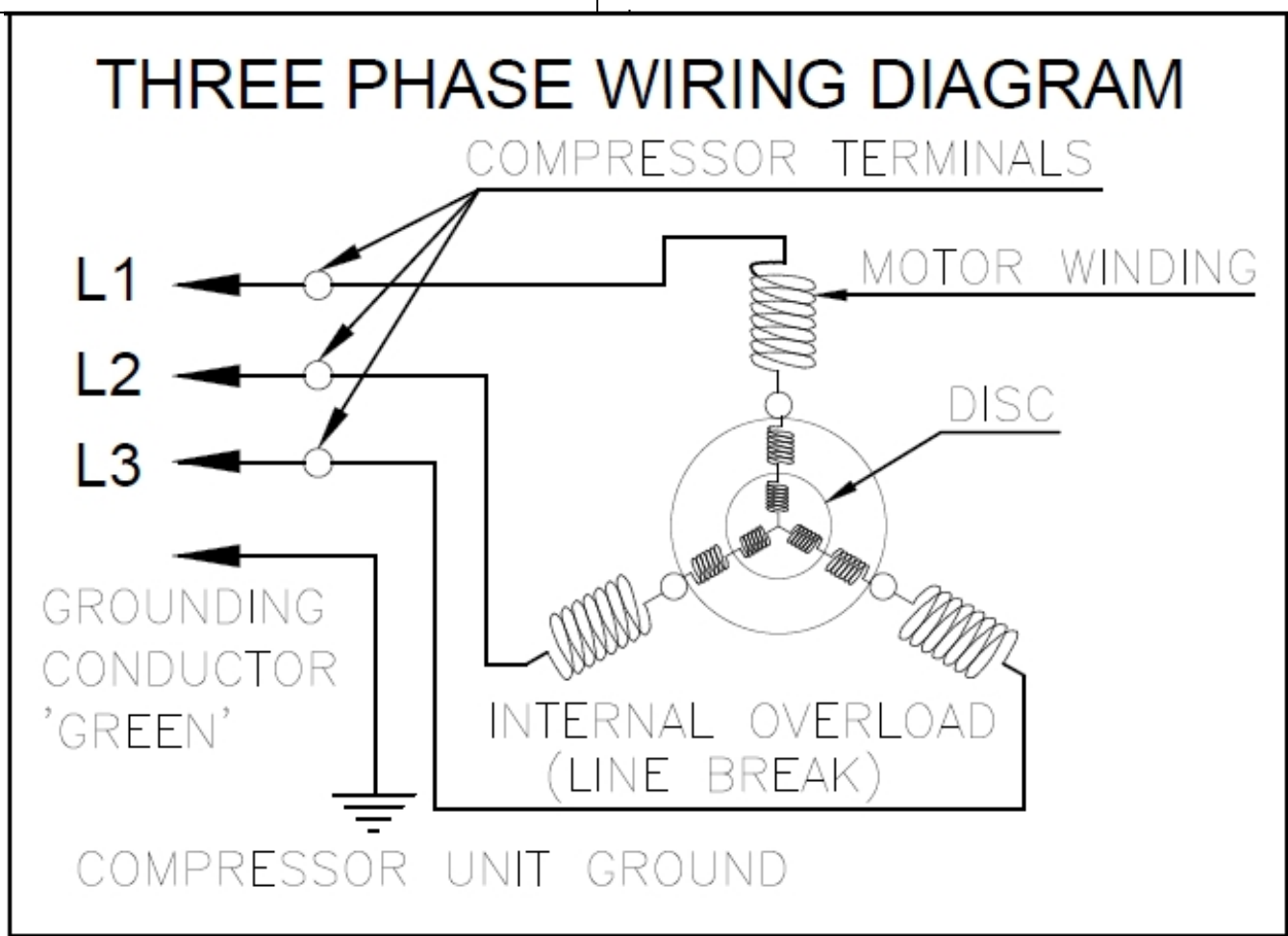
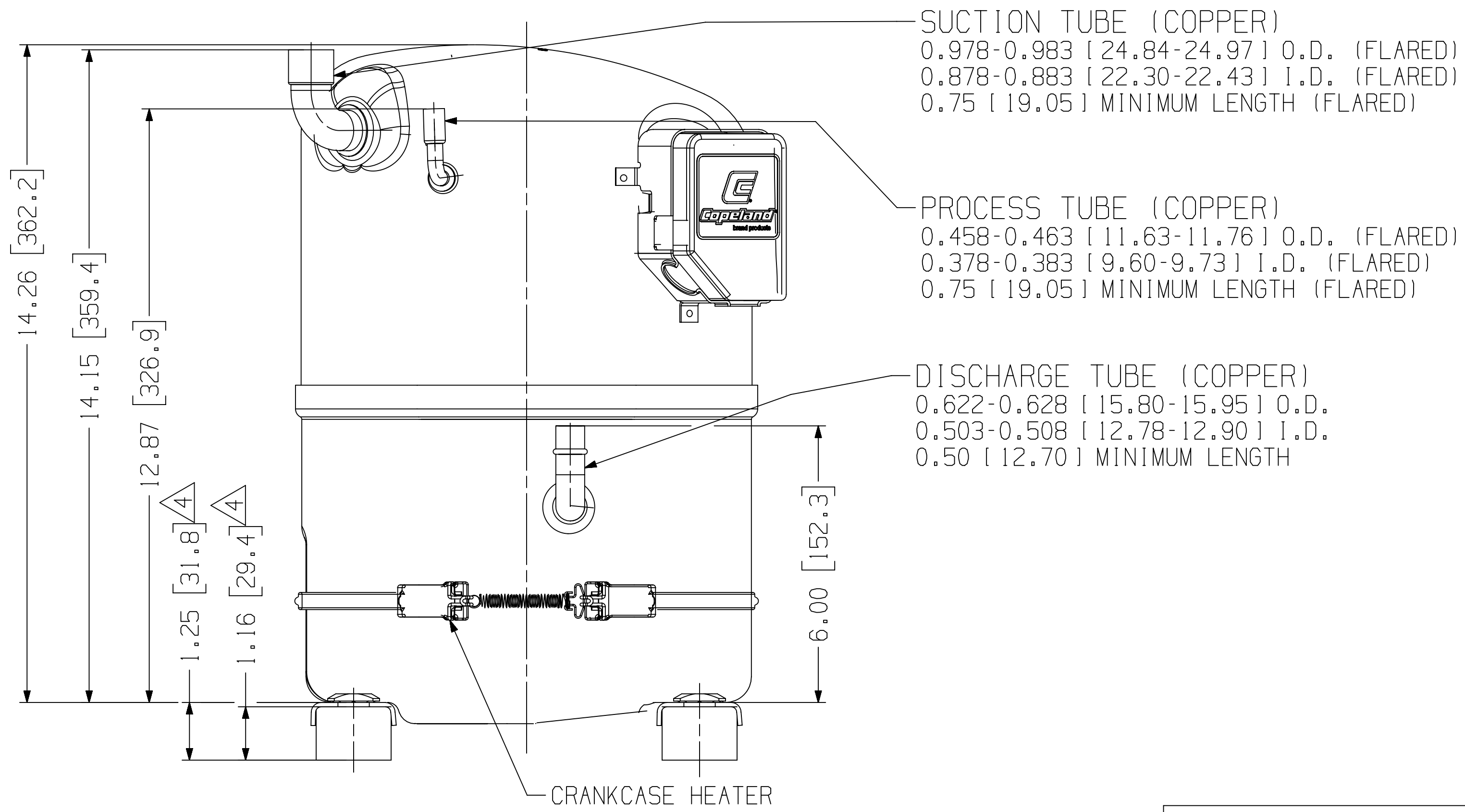
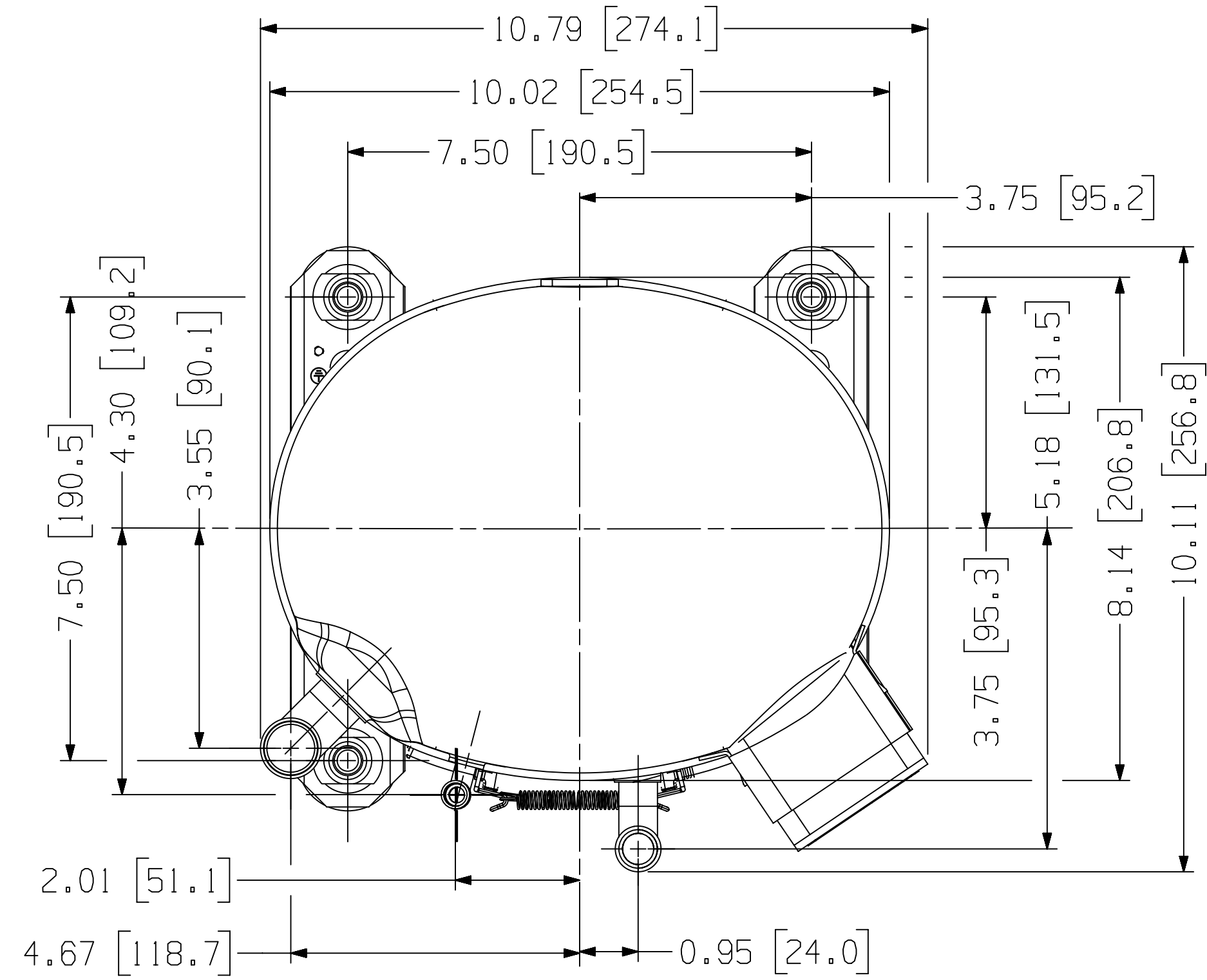


COMPRESSOR MODEL	CRANKCASE HEATER 40 WATT @
CR47KQM-TFD-201	OMIT
CR47KQM-TFD-202	240 V
CR47KQM-TFD-203	480 V
CR47KQM-TF5-201	OMIT
CR47KQM-TF5-202	240 V
CR53KQM-TFD-201	OMIT
CR53KQM-TFD-202	240 V
CR53KQM-TFD-203	480 V
CR53KQM-TF5-201	OMIT
CR53KQM-TF5-202	240 V
CR57KQM-TFD-201	OMIT
CR57KQM-TFD-202	240 V
CR57KQM-TFD-203	480 V
CR57KQM-TF5-201	OMIT
CR57KQM-TF5-202	240 V
CR62KQM-TFD-201	OMIT
CR62KQM-TFD-202	240 V
CR62KQM-TFD-203	480 V
CR62KQM-TF5-201	OMIT
CR62KQM-TF5-202	240 V
CR72KQM-TFM-201	OMIT
CR72KQM-TFM-202	240 V
CR72KQM-TFM-203	480 V
CR47KQME-TFD-201	OMIT
CR47KQME-TFD-202	240 V
CR47KQME-TFD-203	480 V
CR53KQME-TFD-201	OMIT
CR53KQME-TFD-202	240 V
CR53KQME-TFD-203	480 V
CR57KQME-TFD-201	OMIT
CR57KQME-TFD-202	240 V
CR57KQME-TFD-203	480 V
CR62KQME-TFD-201	OMIT
CR62KQME-TFD-202	240 V
CR62KQME-TFD-203	480 V
CR47KQME-TF5-201	OMIT
CR47KQME-TF5-202	240 V
CR53KQME-TF5-202	240 V
CR57KQME-TF5-202	240 V
CR62KQME-TF5-202	240 V
CR72KQME-TFM-202	240 V

\* Add Suffix DM for Sale in India Only



NOTES:-

- ◆ 1. FOOT MOUNTING BOLT TORQUE SHOULD NOT EXCEED 12 lb-ft (16.27 N-m)
- 2. COMPRESSOR COLOR - BLACK.
- 3. BRACKETED DIMENSIONS ARE IN mm.
- △ 4. RUBBER GROMMET MAY COMPRESS BY 0.075 [1.91] ± 0.025 [0.63] APPROXIMATELY DUE TO COMPRESSOR WEIGHT. THE RELATED DIMENSIONS MAY VARY ACCORDINGLY.

5. FOR PERFORMANCE DETAILS, REFER PRODUCT SPECIFICATION.

GUIDELINES FOR HANDLING AND DISPOSAL OF PRODUCTS :

- 1. HANDLE PRODUCT WITH CARE AND IN UPRIGHT POSITION TO AVOID SPILLAGE OF COMPRESSOR OIL.
- 2. DISPOSE OFF RUBBER TUBE PLUGS THROUGH GOVERNMENT AUTHORIZED SCRAP CENTERS.
- 3. IF PRODUCT IS TO BE DISPOSED OFF THEN, PLEASE DO IT THROUGH GOVERNMENT AUTHORIZED SCRAP CENTERS.

REF. DWG.No.  
CRXXKQM-TFX-20X/A3  
497-2970-06/A0

ENG NOTICE NO.	REV.NO.	REVISIONS	DATE	BY	CHKD
ECN325547	3	CORRECTED TITLE BLOCK	10-10-23		
ECN325210	2	UPDATED TITLE BLOCK	08-30-23		
ECN313342	1	MODELS CR*KQME ADDED.	02.03.20	SVS	SRJ
ECN313283	0	REDRAWN IN NX & REL THRU TC	01.28.20	DVM	SRJ

CONFIDENTIALITY NOTICE			
35	THIS DRAWING AND INFORMATION CONTAINED HEREIN ARE THE EXCLUSIVE PROPERTY OF COPELAND LP AND/OR ITS AFFILIATES (COLLECTIVELY "COPELAND") AND SHALL BE RETURNED UPON DEMAND AND SHALL NOT BE REPRODUCED IN WHOLE OR IN PART, DISCLOSED TO ANYONE ELSE OR USED, WITHOUT THE WRITTEN CONSENT OF COPELAND.		
MATERIAL SPECIFICATION	DRAWN BY PAB	SUPERSEDES DWG NO / /	REV NO /
	DATE 12-14-17	SCALE 1:2	DATE FORMAT: MM-DD-YY
TITLE REF DWG-WELD COMP ASSM	DRAWING NUMBER 497-2970-03	SHEET 1 OF 1 DWG	4 SIZE

DUE TO ACCUMULATED ASSEMBLY TOLERANCES THE LISTED PARAMETERS MAY VARY FROM THE MOUNTING HOLES AS TABULATED BELOW. OTHER DIMENSIONS SHOWN ARE MEAN DIMENSIONS AND MAY VARY AS PER RESPECTIVE COMPONENT DRAWINGS.

TOTAL HEIGHT ±0.13 [3.2]	PROCESS TUBE ±0.13 [3.2]
DISCHARGE TUBE ±0.13 [3.2]	SUCTION TUBE ±0.13 [3.2]
MOUNTING HOLE CENTER DISTANCE ±0.03 [0.8]	

**COPELAND**

INTERPRET PER ASME Y14.5M-1994 AND COPELAND DESIGN STANDARDS DS2002

DO NOT SCALE DRAWING

CRITICAL PRODUCT CHARACTERISTICS

UNLESS OTHERWISE SPECIFIED DIMENSIONS ARE INCH OR (MILLIMETER)

TOLERANCES:  
2-PLACE ± N/A  
3-PLACE ± N/A  
ANGULAR ± N/A

©COPYRIGHT COPELAND - CONFIDENTIAL